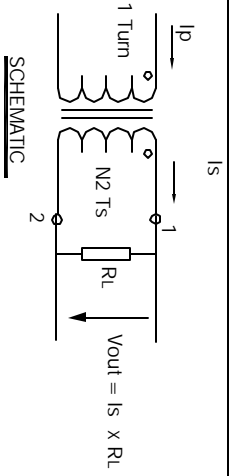


The information contained in this drawing is the sole property of CWS Coil Winding Specialist. Any reproduction in part or whole without written permission of CWS Coil Winding Specialist is prohibited.



Note: All measurements are carried out using rms value responding meter. Unless requested the terminating resistor and the 1-turn primary are not supplied.

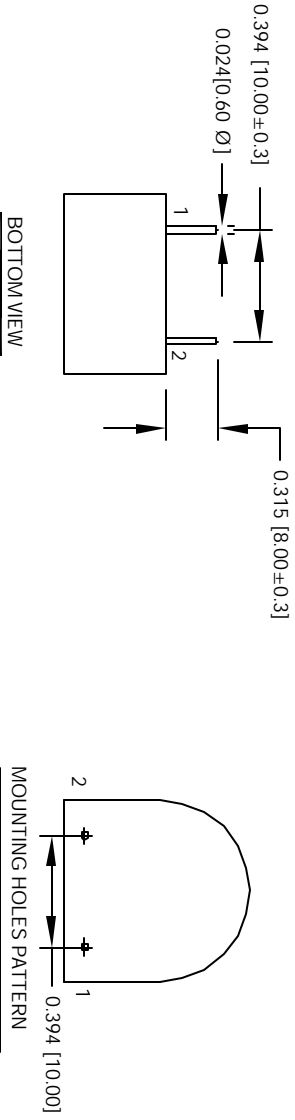
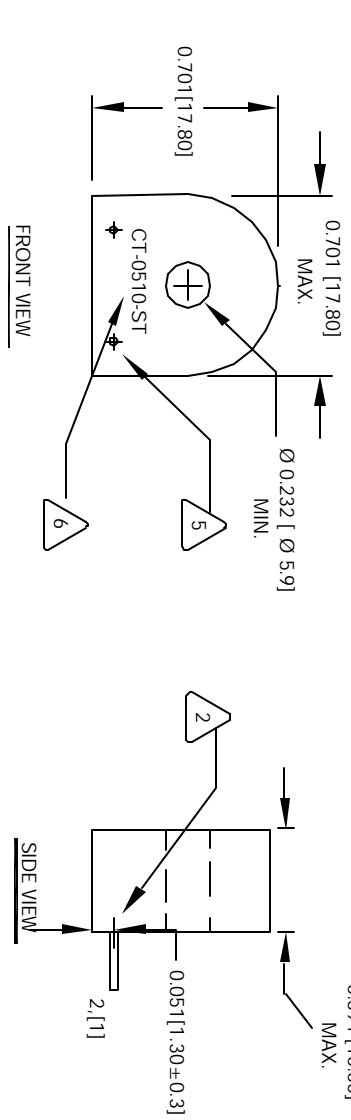
- 6 WHERE SHOWN
MARK PART NUMBER AND REVISION
- 5 REMOVE INSULATION, SOLDERED TO LEADS

- 4 CONSTRUCTION: ENCAPSULATED USING BOBBIN.
OPERATING TEMP. = - 25 °C TO 125 °C
OUTPUT VOLTAGE AT RL AND MAX (In) = 0.4 V RMS
BURDEN RESISTOR (RL) = 100 OHMS
DC RESISTANCE @ 25 °C = 65 OHMS MAX
MAX AMPLITUDE ERROR WITHIN RANGE OF (In) = ± 10%
ACCURACY CLASS = ± 10%
= 10 AMPS RMS MAX.
MAX AC PRIMARY CURRENT WITHOUT SATURATION (I max) = 4 AMPS RMS NOMINAL.
PRIMARY CURRENT RANGE WITH DEFINED ERROR TOLERANCES (In),
3 SPECIFICATIONS @ 25 °C :

- 2 WIRE: UL RECOGNIZED 130 °C RATED MAGNET WIRE
CWS BYTEMARK OR OTHER APPROVED PART
CORE: TAPE WOUND
- 1 BOBBIN RATING CLASS B (130 °C) REQUIRED
MATERIAL: UL RECOGNIZED 94V-0 FOR FLAMMABILITY
UNIT: INCHES [MM]

EP FORM0005 REV 3 10/01

REVISION HISTORY			
REV	ECN	DESCRIPTION	DATE
A		PRODUCTION RELEASE	5/25/04



QTY	CODE IDENT	MFG. P/N	DESCRIPTION	ITEM NO.
			PARTS LIST	
			CWS Coil Winding Specialist. 1510 E. Edinger Ave. Lrht. B. Santa Ana, CA. 92705	
			50/60 Hz Current Sense Transformer (AC)	
			CT-0510-ST	REV A

CAD-FILE:

DO NOT SCALE DRAWING

UNLESS OTHERWISE SPECIFIED
TOLERANCE PER ANG 1/16 IN
ALL DIMENSIONS ARE IN INCHES AND (UNLESS STATED)
TOLERANCE NOTES:
XXXX±0.01 .XX±1.000
XXXX±0.01 .XX±.31
ANGLE PRECISION

UNLESS OTHERWISE SPECIFIED
TOLERANCE PER ANG 1/16 IN
ALL DIMENSIONS ARE IN INCHES AND (UNLESS STATED)
TOLERANCE NOTES:
XXXX±0.01 .XX±1.000
XXXX±0.01 .XX±.31
ANGLE PRECISION

UNLESS OTHERWISE SPECIFIED
TOLERANCE PER ANG 1/16 IN
ALL DIMENSIONS ARE IN INCHES AND (UNLESS STATED)
TOLERANCE NOTES:
XXXX±0.01 .XX±1.000
XXXX±0.01 .XX±.31
ANGLE PRECISION

DO NOT SCALE DRAWING

CAD-FILE: