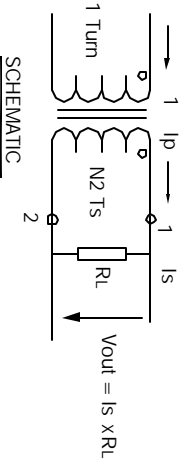


The information contained in this drawing is the sole property of CWS Coil Winding Specialist. Any reproduction in part or whole without written permission of CWS Coil Winding Specialist is prohibited.



Note: All measurements are carried out using rms value responding meter. Unless requested the terminating resistor and the 1-turn primary are not supplied.

- 6 MARK PART NUMBER AND REVISION
- 5 REMOVE INSULATION, SOLDERED TO LEADS
- 4 CONSTRUCTION: ENCAPSULATED USING BOBBIN.

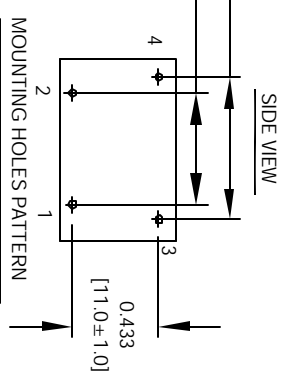
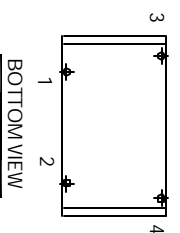
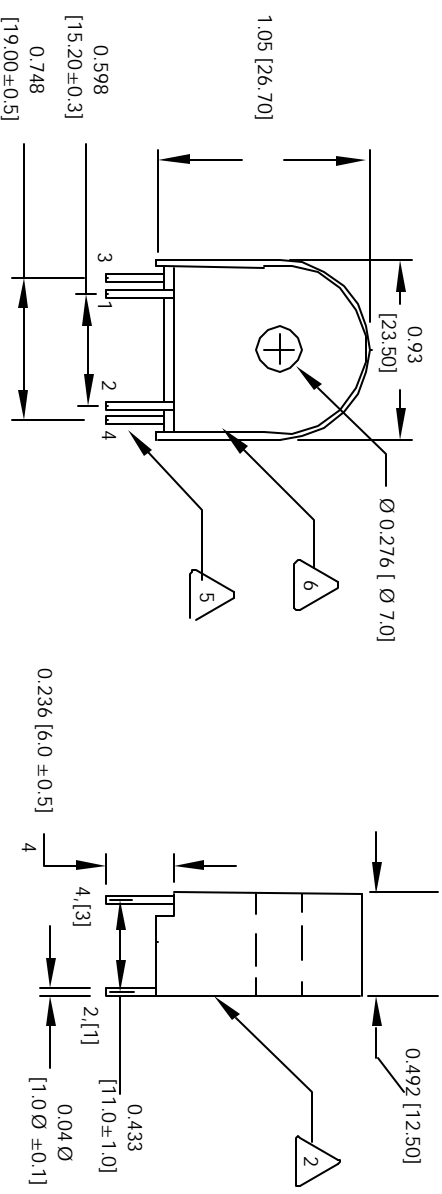
OPERATING TEMP. = .25 °C TO 125 °C
 OUTPUT VOLTAGE AT RL AND MAX (In) = 1.0 V RMS
 BURDEN RESISTOR (RL) = 100 OHMS
 DC RESISTANCE @ 25 °C = 500 OHMS MAX
 MAX AMPLITUDE ERROR WITHIN RANGE OF (In) = ± 0.5%
 MAX PHASE ERROR WITHIN RANGE OF (In) = ± 30°
 ACCURACY CLASS > = 0.5 %
 = 90 AMPS RMS MAX.
 MAX AC PRIMARY CURRENT WITHOUT SATURATION (Imax) = 50 AMPS RMS NOMINAL.
 PRIMARY CURRENT RANGE WITH DEFINED ERROR TOLERANCES (In), SPECIFICATIONS @ 25 °C :

- 3 SPECIFICATIONS @ 25 °C :
- 2 CORE: TAPE WOUND

BOBBIN RATING CLASS B (130 °C) REQUIRED
 MATERIAL: UL RECOGNIZED 94V-0 FOR FLAMMABILITY
 UNIT: INCHES [MM]
 NOTES: UNLESS OTHERWISE SPECIFIED, 50/60 HZ CURRENT SENSOR.

EP FORM0005 REV 3 10/01

REVISION HISTORY			
REV	ECN	DESCRIPTION	DATE
B		PRODUCTION RELEASE	8/24/04



Note: Pin 3 and 4 are only used for mechanical mounting on to PCB

UNLESS OTHERWISE SPECIFIED	
TOLERANCE AND FINISH	±0.005
ALL DIMENSIONS ARE IN INCHES AND (DIMENSIONS)	
TOLERANCE METRICS	±0.130
ANGLE PROJECTION	2nd Angle Projection
DO NOT SCALE DRAWING	

QTY	CODE IDENT	MFG. P/N	DESCRIPTION	ITEM NO.
			PARTS LIST	
			CWS Coil Winding Specialist.	
			1510 E. Edinger Ave.	
			Unit B, Santa Ana, CA, 92705	
			COILS.COM, INC	
			WWW.COILS.COM	
			TITLE: 50/60 Hz Current Sense Transformer	
			SIZE: 0850-ST	
			SCALE: 2=1	
			REV B	
			SHEET 1 OF 1	

CAD-FILE: