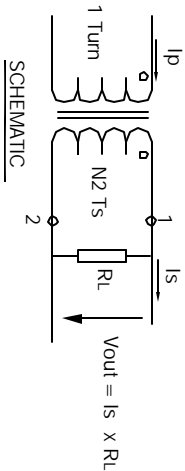
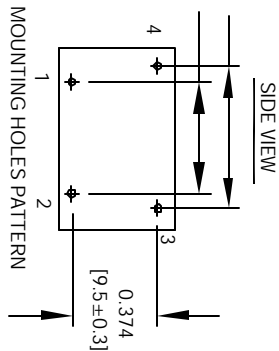
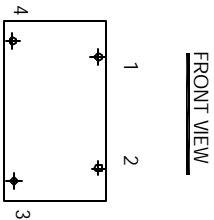
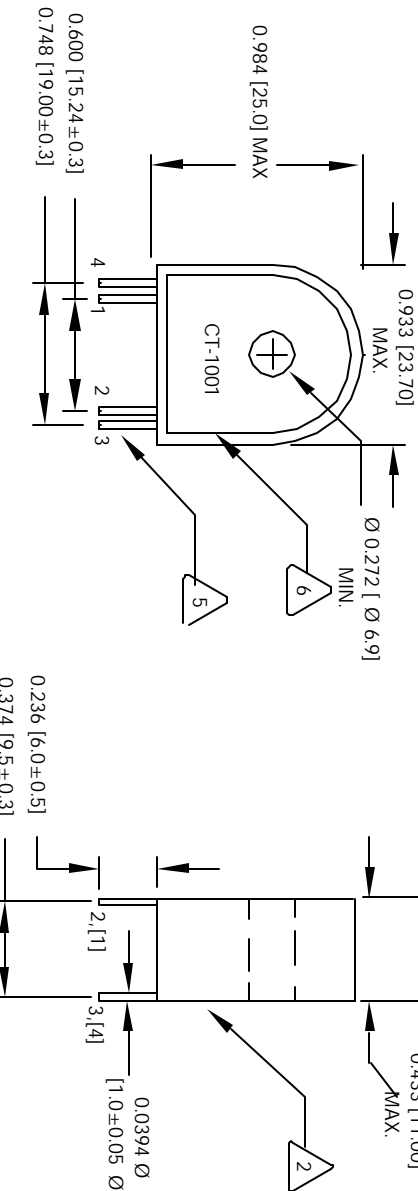


The information contained in this drawing is the sole property of CWS Coil Winding Specialist. Any reproduction in part or whole without written permission of CWS Coil Winding Specialist is prohibited.



Note: All measurements are carried out using rms value responding meter. Unless requested the terminating resistor and the 1-turn primary are not supplied.



MOUNTING HOLES PATTERN

- WHERE SHOWN
MARK PART NUMBER AND REVISION
- REMOVE INSULATION, SOLDERED TO LEADS
- CONSTRUCTION: ENCAPSULATED USING BOBBIN.
OPERATING TEMP. = - 25 °C TO 125 °C
CURRENT RATIO@ 5A = 5A : 2mA
CURRENT RATIO@ 10A = 10A : 4mA
BURDEN RESISTOR (RL) = 100 OHMS
MAX AMPLITUDE ERROR = ± 0.1% @ 5 AMPS
MAX PHASE ERROR = ± 5 °
- PRIMARY CURRENT RANGE = 5 AMPS RMS NOMINAL, 10 AMPS RMS MAX
SPECIFICATIONS @ 25 °C :
- WIRE: UL RECOGNIZED 130 °C RATED MAGNET WIRE
CWS BYTEMARK OR OTHER APPROVED PART
- CORE: TAPE WOUND
- BOBBIN RATING CLASS B (130 °C) REQUIRED
MATERIAL: UL RECOGNIZED 94V-0 FOR FLAMMABILITY

NOTES: UNLESS OTHERWISE SPECIFIED, 50/60 HZ CURRENT SENSOR.
UNIT: INCHES [MM]

REVISION HISTORY					
REV	ECN	DESCRIPTION	SIGN & DATE		
			BY	DATE	CHK
B		PRODUCTION RELEASE	FRF	8/10/04	JLU
				8/10/04	

QTY	CODE	IDENT	MFG. P/N	DESCRIPTION	ITEM NO.
PARTS LIST					
AUTOCAD			X		
SOLIDWORKS					
SIGN			DATE		
DRAWN			8/10/04		
RFR			8/10/04		
CHKD			8/10/04		
ENGR			8/10/04		
APPR			8/10/04		
JLU			8/10/04		
SCALE			2=1		
SHEET			1		
OF			1		