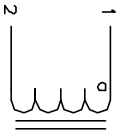


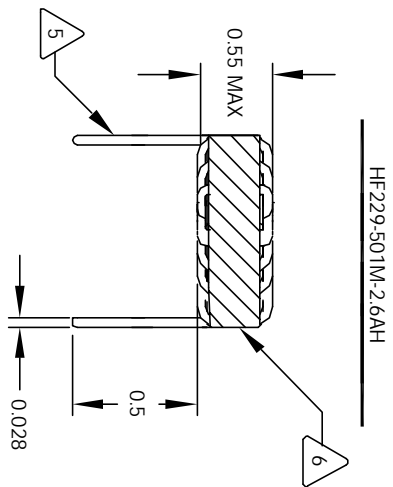
The information contained in this drawing is the sole property of CWS Coil Winding Specialist. Any reproduction in part or whole without written permission of CWS Coil Winding Specialist is prohibited.

REVISION HISTORY

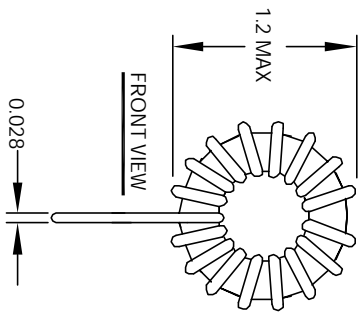
REV	ECN	DESCRIPTION	SIGN & DATE			
			BY	DATE	CHK	DATE
B		PRODUCTION RELEASE	TDK	7/02/07	JLJU	7/02/07



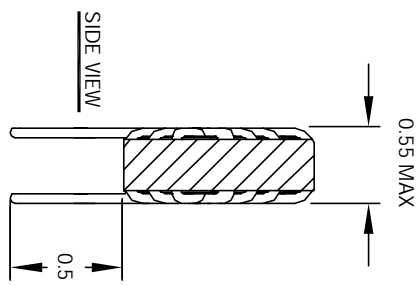
SCHEMATIC



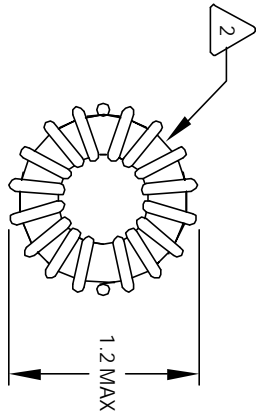
FRONT VIEW



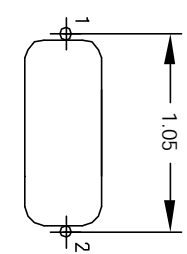
FRONT VIEW



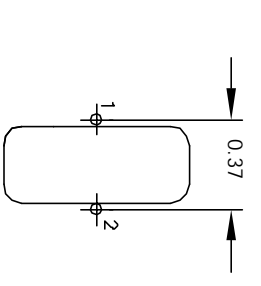
SIDE VIEW



BOTTOM VIEW



MOUNTING HOLES PATTERN



MOUNTING HOLES PATTERN

- 7 BUILT TO ROHS COMPLIANCE AND LEAD FREE.
- USING A PERMANENT MARKING METHOD
- MARK PART NUMBER AND REVISION, IF APPLICABLE
- IF NEEDED, WRAP INDUCTOR WITH GLASS TAPE

- 6 TO THE CORE
- MUST REST FLAT ON PCB. LEADS MUST BE TANGENT
- FLUSH WITH THE COIL EDGE, AS SHOWN (I.E. COIL
- REMOVE INSULATION AND TIN LEADS 0.5 INCH

- 5 WIND COILS EVENLY SPACED AROUND THE CORE
- CONSTRUCTION:

- 4 HI-POT TEST FOR WINDING TO CORE ISOLATION = 500VDC MIN
- CURRENT RATING : 2.6 AMPS, 40 °C TEMP. RISE, NO AIR FLOW
- DCR 160.0 MILLI-OHMS MAX.
- DC BIASED = 2.6 AMPS, INDUCTANCE = 405 UH
- DC BIASED = 3.8 AMPS, INDUCTANCE = 400 UH
- INDUCTANCE = 500 UH +/-10% @ LOW DC BIAS, 1 KHz, 250mV
- SPECIFICATIONS:

- 3 WIRE: UL RECOGNIZED 200°C RATED MAGNET WIRE
- CWS BYTE-MARK OR OTHER APPROVED PART
- CORE: COATED HIGH FLUX TOROIDAL CORE

- 2 RATING CLASS B (130°C MIN.) REQUIRED
 - 1 MATERIAL: UL RECOGNIZED 94V-0 FOR FLAMMABILITY
- NOTES: TOROIDAL POWER CHOKES. ALL DIMENSIONS IN INCHES
READ FROM BOTTOM UP.

UNLESS OTHERWISE SPECIFIED	
DIMENSIONING AND TOLERANCE PER ANSI Y14.5M	ALL DIMENSIONS ARE IN INCHES AND (DIMENSIONS)
TOLERANCE INCHES	±.0030
XX±.005	XX±.015
TOLERANCE METRCS	±.0750
XX±.127	XX±.254
ANGLE PROJECTION	
DO NOT SCALE DRAWINGS	

CODE IDENT	MFG. P/N	DESCRIPTION	ITEM NO.
AUTOCAD	X		
SOLIDWORKS			
SIGN	DATE	PARTS LIST	
DRAWN	7/02/07	CWS Coil Winding Specialist.	
CHKD	7/02/07	353 W. GROVE AVENUE	
ENGR.	7/02/07	ORANGE, CA. 92865	
APPR.	7/02/07	TITLE: Toroidal Power Chokes	
		Toroid Inductor	
SIZE	DATE	REV	
B	7/02/07	B	
SCALE	2=1	SHEET	1 OF 1