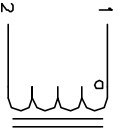


The information contained in this drawing is the sole property of CWS Coil Winding Specialists. Any reproduction in part or whole without written permission of CWS Coil Winding Specialists is prohibited.

REVISION HISTORY

REV	ECN	DESCRIPTION	SIGN & DATE		
			BY	DATE	CHK
C		PRODUCTION RELEASE	BJN	1/17/07	JLJU
			JLJU	1/17/07	



SCHEMATIC

USING A PERMANENT MARKING METHOD

MARK PART NUMBER AND REVISION, IF APPLICABLE
IF NEEDED, WRAP INDUCTOR WITH GLASS OR MYLAR TAPE

TO THE CORE

MUST REST FLAT ON PCB. LEADS MUST BE TANGENT
FLUSH WITH THE COIL EDGE. AS SHOWN (I.E. COIL
REMOVE INSULATION AND TIN LEADS 0.75 INCH

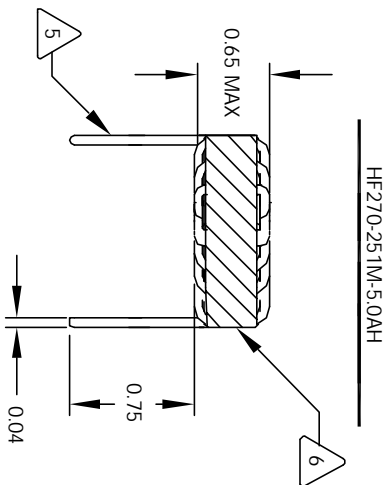
WIND COILS EVENLY SPACED AROUND THE CORE
CONSTRUCTION:

HI-POT TEST FOR WINDING TO CORE ISOLATION = 500VDC MIN
CURRENT RATING : 5 AMPS, 40 °C TEMP. RISE, NO AIR FLOW
DCR = 60.0 MILLI-OHMS MAX.
DC BIASED = 5.0 AMPS, INDUCTANCE = 210 UH
DC BIASED = 6.8 AMPS, INDUCTANCE = 200 UH
INDUCTANCE = 250 UH +/-10% @ LOW DC BIAS, 1 KHz, 250mV
SPECIFICATIONS:

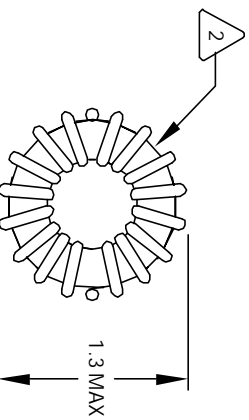
WIRE: UL RECOGNIZED 200°C RATED MAGNET WIRE
CWS BYTEMARK OR OTHER APPROVED PART
CORE: COATED HIGH FLUX TOROIDAL CORE

RATING CLASS B (130°C MIN.) REQUIRED
MATERIAL: UL RECOGNIZED 94V-0 FOR FLAMMABILITY

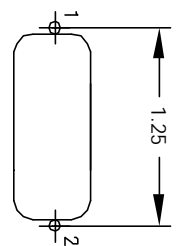
NOTES: TOROIDAL POWER CHOKER. ALL DIMENSIONS IN INCHES



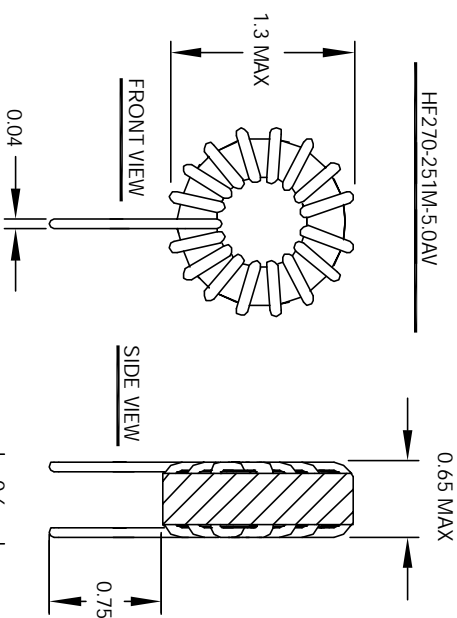
FRONT VIEW



BOTTOM VIEW

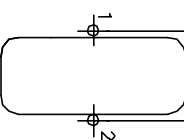


MOUNTING HOLES PATTERN



SIDE VIEW

FRONT VIEW



MOUNTING HOLES PATTERN

UNLESS OTHERWISE SPECIFIED
DIMENSIONING AND TOLERANCE PER ANSI Y14.5M
ALL DIMENSIONS ARE IN INCHES AND (UNLESS STATED)
TOLERANCE INCHES: ± 0.030
$.XX = \pm 0.05$ $.XY = \pm 0.15$
TOLERANCE METRCS: ± 0.001
$.XX = \pm .127$ $.XY = \pm .38$
ANGLE PROJECTION
DO NOT SCALE DRAWINGS

CODE IDENT	MFG. P/N	DESCRIPTION	ITEM NO.
AUTOCAD SOLIDWORKS SIGN	X		
DATE	DATE		
1/17/07	1/17/07		
ENGR. APPR.	ENGR. APPR.		
KSUM JLJU	KSUM JLJU		
1/17/07	1/17/07		
SIZE	DATE	TITLE	REV
B	1/17/07	Toroidal Power Chokes	C
SCALE	2=1	HF-270-251M-5.0A	

PARTS LIST

CWS Coil Winding Specialists.
353 WEST GROVE
ORANGE, CA 92665

Toroidal Power Chokes
HF-270-251M-5.0A