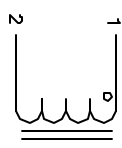


The information contained in this drawing is the sole property of CWS Coil Winding Specialist. Any reproduction in part or whole without written permission of CWS Coil Winding Specialist is prohibited.

REVISION HISTORY			
REV	ECN	DESCRIPTION	DATE
A		PRODUCTION RELEASE	2/9/04



SCHEMATIC

- 6 USING A PERMANENT MARKING METHOD
 MARK PART NUMBER AND REVISION, IF APPLICABLE
 IF NEEDED, WRAP INDUCTOR WITH GLASS TAPE
 TO THE CORE
 MUST REST FLAT ON PCB. LEADS MUST BE TANGENT
 FLUSH WITH THE COIL EDGE. AS SHOWN (I.E. COIL
 REMOVE INSULATION AND TIN LEADS 0.75 INCH

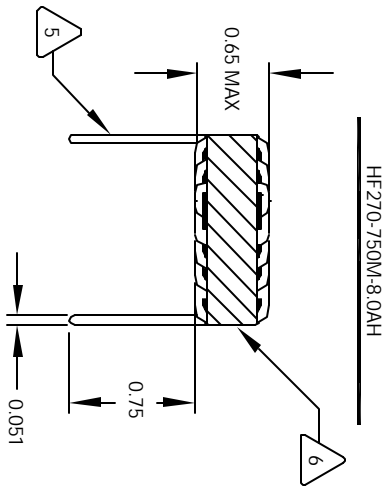
- 5 WIND COILS EVENLY SPACED AROUND THE CORE
 CONSTRUCTION:

- 4 HI-POT TEST FOR WINDING TO CORE ISOLATION = 500VDC MIN
 CURRENT RATING : 8.0 AMPS, 40 °C TEMP. RISE, NO AIR FLOW
 DCR = 23.0 MILLI-OHMS MAX.
 DC BIASED = 8.0 AMPS, INDUCTANCE = 66 UH
 DC BIASED = 12.0 AMPS, INDUCTANCE = 60 UH
 INDUCTANCE = 75 UH +-10% @ LOW DC BIAS, 1 KHZ, 250mV
 SPECIFICATIONS:

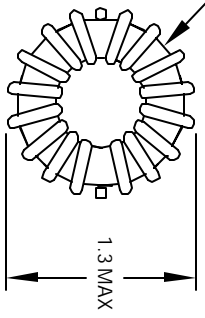
- 3 WIRE: UL RECOGNIZED 200°C RATED MAGNET WIRE
 CWS BYTE-MARK OR OTHER APPROVED PART
 CORE: COATED HIGH FLUX TOROIDAL CORE

- 2 RATING CLASS B (130°C MIN.) REQUIRED
 MATERIAL: UL RECOGNIZED 94V-0 FOR FLAMMABILITY

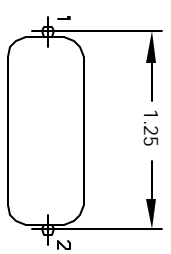
NOTES: TOROIDAL POWER CHOKE. ALL DIMENSIONS IN INCHES



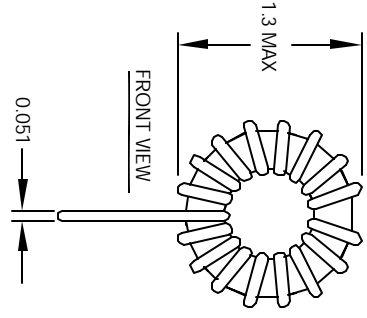
FRONT VIEW



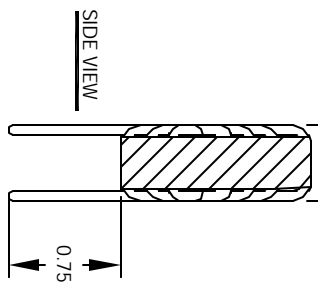
BOTTOM VIEW



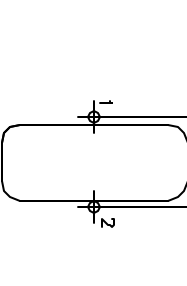
MOUNTING HOLES PATTERN



FRONT VIEW



SIDE VIEW



MOUNTING HOLES PATTERN

CODE IDENT	MFG. P/N	DESCRIPTION	ITEM NO.
		PARTS LIST	
AUTOCAD SOLIDWORKS SIGN	X	CWS Coil Winding Specialist www.cwcoilwinding.com	
DATE	DATE	DATE	DATE
2/8/04	2/9/04	2/9/04	2/9/04
3/8/04	3/8/04	3/8/04	3/8/04
3/8/04	3/8/04	3/8/04	3/8/04