

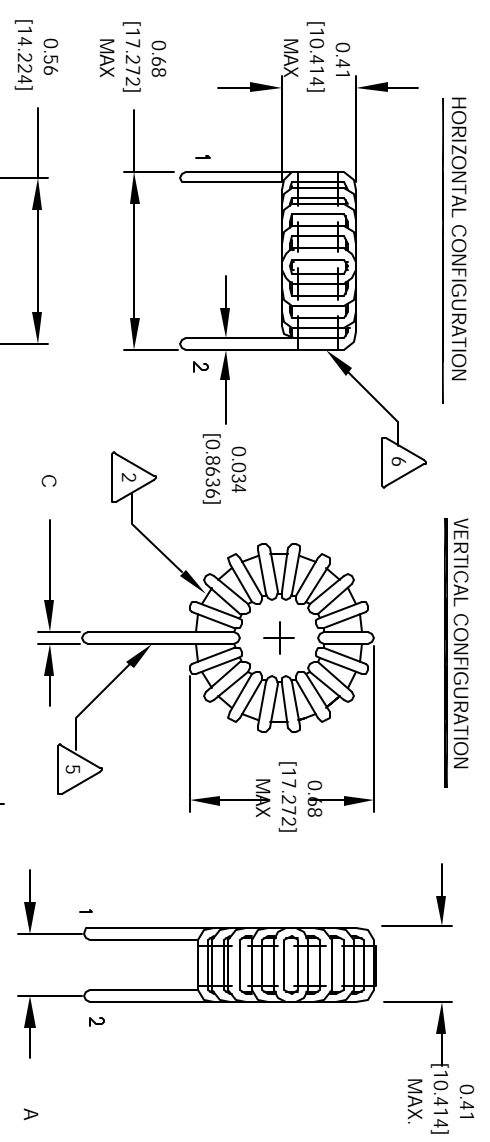
The information contained in this drawing is the sole property of CWS Coil Winding Specialist. Any reproduction in part or whole without written permission of CWS Coil Winding Specialist is prohibited.

REVISION HISTORY

REV	ECN	DESCRIPTION	DATE	BY	CHK
A		PRODUCTION RELEASE	9/08/04	JLU	9/08/04



SCHEMATIC

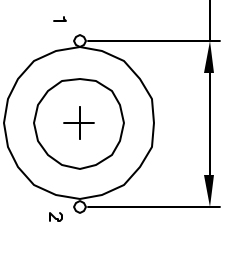


- 6 WHERE SHOWN, USING A PERMANENT MARKING METHOD IF APPLICABLE, MARK PART NUMBER AND REVISION
- 5 FLUSH WITH THE COIL EDGE, AS SHOWN
REMOVE INSULATION AND TIN LEADS APPROX. 0.25 INCH
- 4 WIND WIRE TO CORE EVENLY SPACED
CONSTRUCTION:

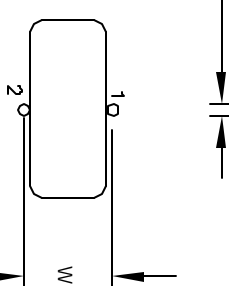
- 3 HI-POT TEST FOR WIRE TO CORE = 500 VDC
INDUCTANCE @ ± 15% RATED CURRENT = 8.7 uH
DC CURRENT RATING = 6.4 AMPS MAX
DCR = 16.0 MILLI-OHMS, MAX
INDUCTANCE @ 0 AMPS = 12.0 uH, ± 15%, 1 KHZ., 0.25 Vrms
SPECIFICATIONS @ 25 °C

- 2 WIRE: UL RECOGNIZED 130°C RATED MAGNET WIRE
CORE: COATED MICROMETAL IRON POWDER
 - 1 CORE COATING RATING CLASS B (130°) REQUIRED
MATERIAL: UL RECOGNIZED 94V-0 FOR FLAMMABILITY
- NOTES: UNLESS OTHERWISE SPECIFIED, TOROIDAL INDUCTOR

MOUNTING HOLES PATTERN



MOUNTING HOLES PATTERN



CODE IDENT	MFG. P/N	DESCRIPTION	ITEM NO.
AUTOCAD SIGN	X		
SOLIDWORKS SIGN			

DATE	BY	CHK
5/08/04	RFR	
5/08/04	JLU	
5/08/04	DNR	
9/08/04	KSU	
9/08/04	JLU	

TITLE:	SCALE:	SIZE (INCHES):	REV
COILS.COM, INC www.coils.com	2=1	0.750	A
CWS Coil Winding Specialist 1510 E. Edinger Ave. Unit B, Santa Ana, CA 92705		0.750	
High Current Toroidal Inductors Vertical & Horizontal		0.750	
J20-120H		0.750	