

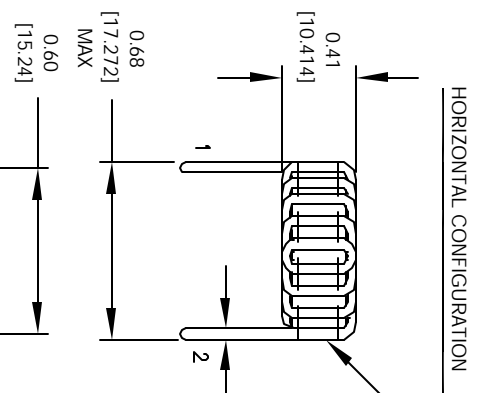
The information contained in this drawing is the sole property of CWS Coil Winding Specialist. Any reproduction in part or whole without written permission of CWS Coil Winding Specialist is prohibited.

REVISION HISTORY

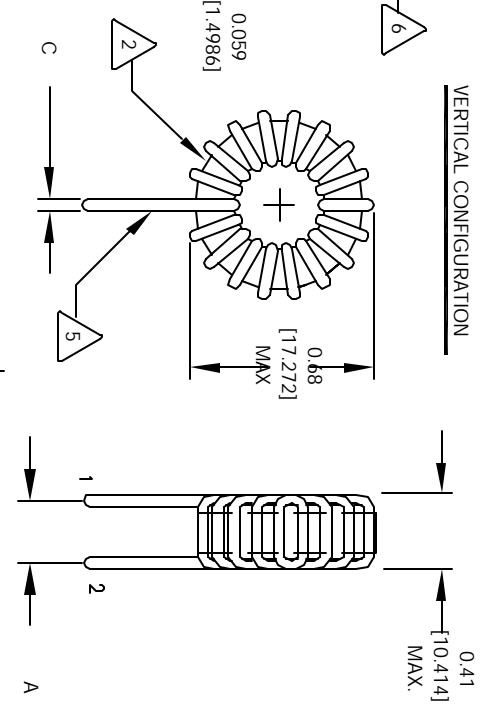
REV	ECN	DESCRIPTION	DATE	BY	CHK	DATE
A		PRODUCTION RELEASE	9/08/04	JLU		9/08/04



SCHEMATIC



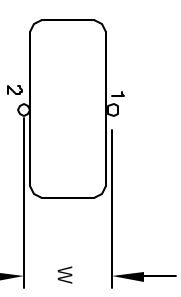
HORIZONTAL CONFIGURATION



VERTICAL CONFIGURATION



MOUNTING HOLES PATTERN



MOUNTING HOLES PATTERN

6 WHERE SHOWN, USING A PERMANENT MARKING METHOD IF APPLICABLE, MARK PART NUMBER AND REVISION

5 FLUSH WITH THE COIL EDGE, AS SHOWN REMOVE INSULATION AND TIN LEADS APPROX. 0.25 INCH

4 WIND WIRE TO CORE EVENLY SPACED CONSTRUCTION:

3 HI-POT TEST FOR WIRE TO CORE = 500 VDC
 INDUCTANCE @ ± 20% RATED CURRENT = 0.86 uH
 DC CURRENT RATING = 20.2 AMPS MAX
 DCR = 1.7 MILLI-OHMS, MAX
 INDUCTANCE @ 0 AMPS = 1.2 uH, ± 20%, 1 KHZ., 0.25 Vrms
 SPECIFICATIONS @ 25 °C

2 WIRE: UL RECOGNIZED 130°C RATED MAGNET WIRE
 CORE: COATED MICROMETAL IRON POWDER

1 CORE COATING RATING CLASS B (130°) REQUIRED
 MATERIAL: UL RECOGNIZED 94V-0 FOR FLAMMABILITY
 NOTES: UNLESS OTHERWISE SPECIFIED, TOROIDAL INDUCTOR

UNLESS OTHERWISE SPECIFIED	
DRAWING AND TOLERANCE PER ANSI Y14.5M	
ALL DIMENSIONS ARE IN NOTES AND DIMENSIONS	
TOLERANCE INCHES	±.0030
TOLERANCE METERS	±.0750
UNLESS OTHERWISE SPECIFIED	
DO NOT SCALE DRAWING	

CODE IDENT	MFG. P/N	DESCRIPTION	ITEM NO.
AUTOCAD SOLIDWORKS SIGN <td>X <td></td> <td></td> </td>	X <td></td> <td></td>		
DATE <td> <td> <td> </td></td></td>	<td> <td> </td></td>	<td> </td>	
PARTS LIST			
COILS.COM, INC	CWS Coil Winding Specialist.		
WWW.COILS.COM	1510 E. Edinger Ave.		
	Unit B, Santa Ana, CA, 92705		
TITLE: High Current Toroidal Inductors			
Vertical & Horizontal			
SIZE	DRW. NO.		REV
B	J20-1R2H		A
SCALE	2=1	SHEET	1 OF 1