

The information contained in this drawing is the sole property of CWS Coil Winding Specialist. Any reproduction in part or whole without written permission of CWS Coil Winding Specialist is prohibited.

REVISION HISTORY

REV	ECN	DESCRIPTION	DATE	BY	CHK
A		PRODUCTION RELEASE	9/08/04	JLU	9/08/04



SCHEMATIC

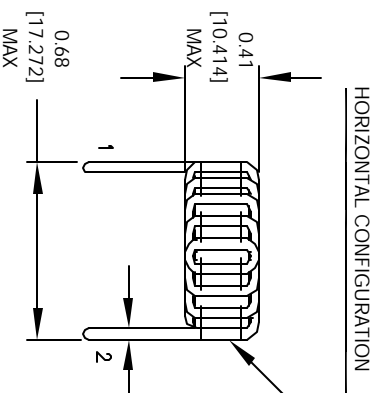
6 WHERE SHOWN, USING A PERMANENT MARKING METHOD IF APPLICABLE, MARK PART NUMBER AND REVISION

5 FLUSH WITH THE COIL EDGE, AS SHOWN REMOVE INSULATION AND TIN LEADS APPROX. 0.25 INCH

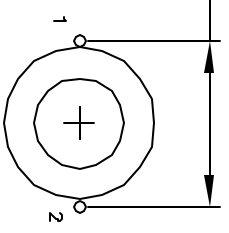
4 WIND WIRE TO CORE EVENLY SPACED CONSTRUCTION:

3 HI-POT TEST FOR WIRE TO CORE = 500 VDC
 INDUCTANCE @ ± 20% RATED CURRENT = 2.5 uH
 DC CURRENT RATING = 11.1 AMPS MAX
 DCR = 5.3 MILLI-OHMS, MAX
 INDUCTANCE @ 0 AMPS = 3.3 uH, ± 20%, 1 KHZ., 0.25 Vrms
 SPECIFICATIONS @ 25 °C

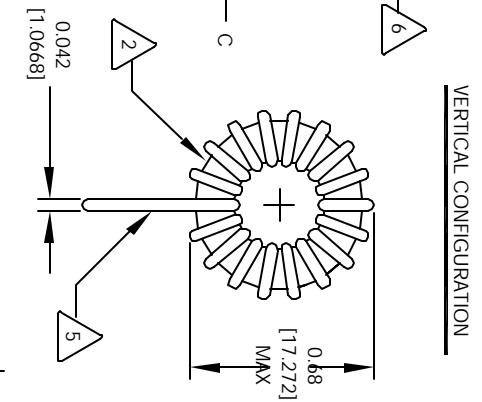
2 WIRE: UL RECOGNIZED 130°C RATED MAGNET WIRE
 CORE: COATED MICROMETAL IRON POWDER
 CORE COATING RATING CLASS B (130°) REQUIRED
 MATERIAL: UL RECOGNIZED 94V-0 FOR FLAMMABILITY
 NOTES: UNLESS OTHERWISE SPECIFIED, TOROIDAL INDUCTOR



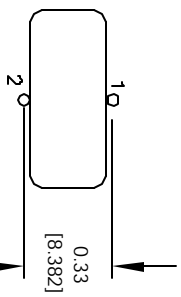
HORIZONTAL CONFIGURATION



MOUNTING HOLES PATTERN



VERTICAL CONFIGURATION



MOUNTING HOLES PATTERN

CODE IDENT	MFG. P/N	DESCRIPTION	ITEM NO.
		PARTS LIST	
AUTOCAD	X		
SOLIDWORKS			
UNLESS OTHERWISE SPECIFIED			
TOLERANCE PER ANSI Y14.5M			
ALL DIMENSIONS ARE IN NOTES AND DIMENSIONS ARE IN NOTES			
TOLERANCE INCHES	±0.030		
TOLERANCE METERS	±0.001		
UNLESS OTHERWISE SPECIFIED			
ANGLE PROJECTION	AS SHOWN		
DO NOT SCALE DRAWING			
DRAWN	RRR	9/08/04	
CHKD	JLU	9/08/04	
ENGR	KSUM	9/08/04	
APPR	JLU	9/08/04	
SCALE	B		
SIZE	DRG. NO.	J20-3R3V	REV A
SCALE	2=1		SHEET 1 OF 1

High Current Toroidal Inductors
 Vertical & Horizontal

COILS.COM, INC
 WWW.COILS.COM
 1510 E. Edinger Ave.
 Unit B, Santa Ana, CA 92705