

The information contained in this drawing is the sole property of CWS Coil Winding Specialist. Any reproduction in part or whole without written permission of CWS Coil Winding Specialist is prohibited.

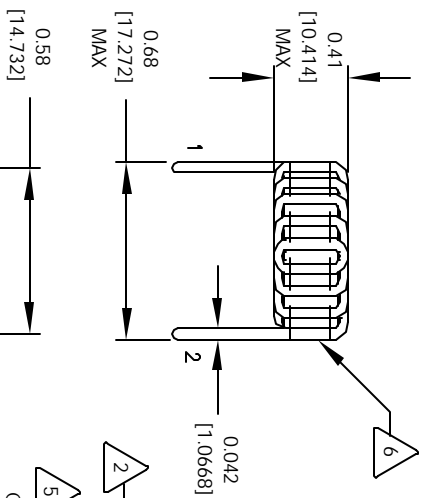
REVISION HISTORY

REV	ECN	DESCRIPTION	DATE	BY	CHK
B		PRODUCTION RELEASE	3/18/05	JLU	3/18/05

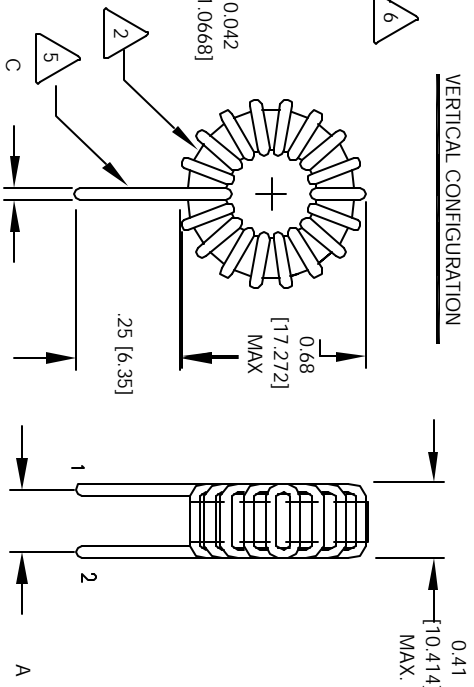


SCHEMATIC

HORIZONTAL CONFIGURATION



VERTICAL CONFIGURATION



6 WHERE SHOWN, USING A PERMANENT MARKING METHOD IF APPLICABLE, MARK PART NUMBER AND REVISION

5 FLUSH WITH THE COIL EDGE, AS SHOWN REMOVE INSULATION AND TIN LEADS APPROX. 0.25 INCH

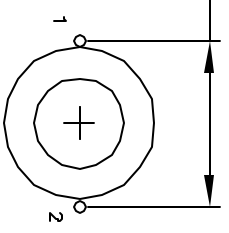
4 WIND WIRE TO CORE EVENLY SPACED CONSTRUCTION:

3 HI-POT TEST FOR WIRE TO CORE = 500 VDC  
 INDUCTANCE @ ± 20% RATED CURRENT = 3.5 uH  
 DC CURRENT RATING = 10.1 AMPS MAX  
 DCR = 6.4 MILLI-OHMS, MAX  
 INDUCTANCE @ 0 AMPS = 4.7 uH, ± 20%, 1 KHZ, 0.25 Vrms  
 SPECIFICATIONS @ 25 °C

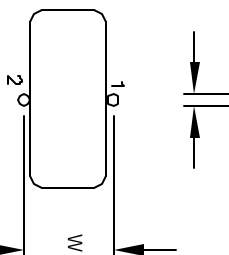
2 WIRE: UL RECOGNIZED 130°C RATED MAGNET WIRE  
 CORE: COATED MICROMETAL IRON POWDER

1 CORE COATING RATING CLASS B (130°) REQUIRED  
 MATERIAL: UL RECOGNIZED 94V-0 FOR FLAMMABILITY  
 NOTES: UNLESS OTHERWISE SPECIFIED, TOROIDAL INDUCTOR READ FROM BOTTOM UP.

MOUNTING HOLES PATTERN



MOUNTING HOLES PATTERN



CODE IDENT	MFG. P/N	DESCRIPTION	ITEM NO.
		<b>PARTS LIST</b>	
AUTOCAD	X		
SOLIDWORKS			
SIGN	DATE		
DRAWN	3/18/05		
CHKD	3/18/05		
ENGR	3/18/05		
APPR	3/18/05		
JLU			

UNLESS OTHERWISE SPECIFIED	TOLERANCE PER ANSI Y14.5M
ALL DIMENSIONS ARE IN INCHES AND (MILLIMETERS)	
TOLERANCE INCHES	±.0005
TOLERANCE METERS	±.001
ANGLE PROJECTION	1ST ANGLE
DO NOT SCALE DRAWING	

TITLE:	High Current Toroidal Inductors
Vertical & Horizontal	
SIZE	DRW. NO.
B	J20-4R7H
SCALE	2=1
SHEET	1 OF 1