

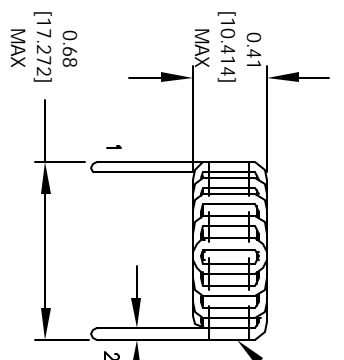
The information contained in this drawing is the sole property of CWS Coil Winding Specialist. Any reproduction in part or whole without written permission of CWS Coil Winding Specialist is prohibited.

REVISION HISTORY

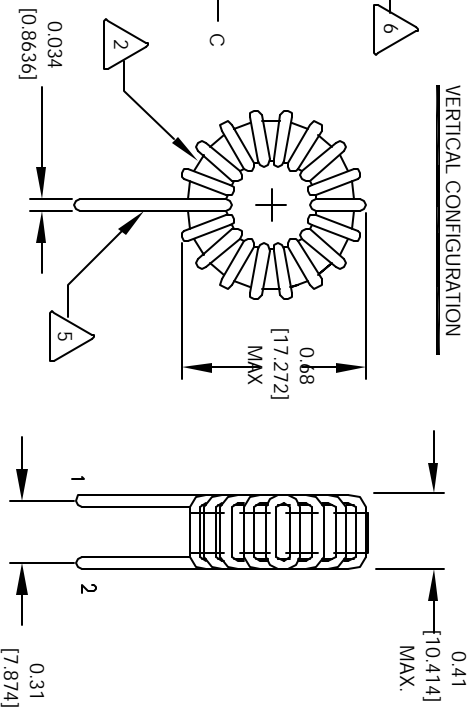
REV	ECN	DESCRIPTION	DATE	BY	CHK
A		PRODUCTION RELEASE	9/08/04	JLU	9/08/04



HORIZONTAL CONFIGURATION



VERTICAL CONFIGURATION



6 WHERE SHOWN, USING A PERMANENT MARKING METHOD IF APPLICABLE, MARK PART NUMBER AND REVISION

5 FLUSH WITH THE COIL EDGE, AS SHOWN REMOVE INSULATION AND TIN LEADS APPROX. 0.25 INCH

4 WIND WIRE TO CORE EVENLY SPACED CONSTRUCTION:

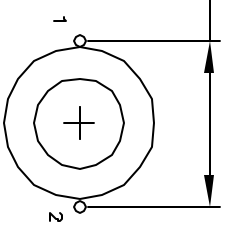
3 HI-POT TEST FOR WIRE TO CORE = 500 VDC  
 INDUCTANCE @ ± 20% RATED CURRENT = 5.7 uH  
 DC CURRENT RATING = 7.2 AMPS MAX  
 DCR = 13.0 MILLI-OHMS, MAX  
 INDUCTANCE @ 0 AMPS = 6.8 uH, ± 20%, 1 KHZ, 0.25 Vrms  
 SPECIFICATIONS @ 25 °C

2 WIRE: UL RECOGNIZED 130°C RATED MAGNET WIRE  
 CORE: COATED MICROMETAL IRON POWDER

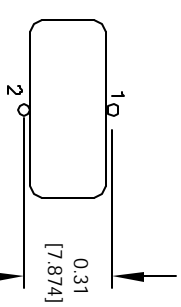
1 CORE COATING RATING CLASS B (130°) REQUIRED  
 MATERIAL: UL RECOGNIZED 94V-0 FOR FLAMMABILITY

NOTES: UNLESS OTHERWISE SPECIFIED, TOROIDAL INDUCTOR

MOUNTING HOLES PATTERN



MOUNTING HOLES PATTERN



CODE IDENT	MFG. P/N	DESCRIPTION	ITEM NO.
		<b>PARTS LIST</b>	
AUTOCAD	X	CWS Coil Winding Specialist.	
SOLIDWORKS		1510 E. Edinger Ave.	
SIGN	DATE	WWW.COIWS.COM	
UNLESS OTHERWISE SPECIFIED			
TOLERANCE PER ANSI Y14.5M			
ALL DIMENSIONS ARE IN NOTES			
AND UNLESS OTHERWISE SPECIFIED			
TOLERANCE INCHES	±.0030		
TOLERANCE METERS	±.0750		
UNLESS OTHERWISE SPECIFIED			
ANGLE PROJECTION			
DO NOT SCALE DRAWING			

**COIWS.COM, INC**  
 High Current Toroidal Inductors  
 Vertical & Horizontal  
**J20-6R8V**

SCALE: **2=1**

SHEET **1** OF **1**