

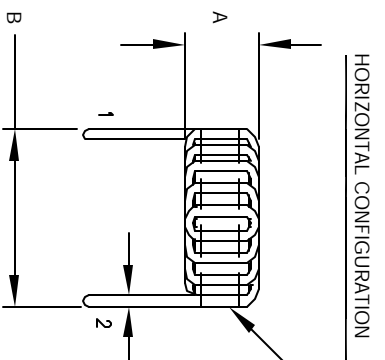
The information contained in this drawing is the sole property of CWS Coil Winding Specialist. Any reproduction in part or whole without written permission of CWS Coil Winding Specialist is prohibited.

REVISION HISTORY

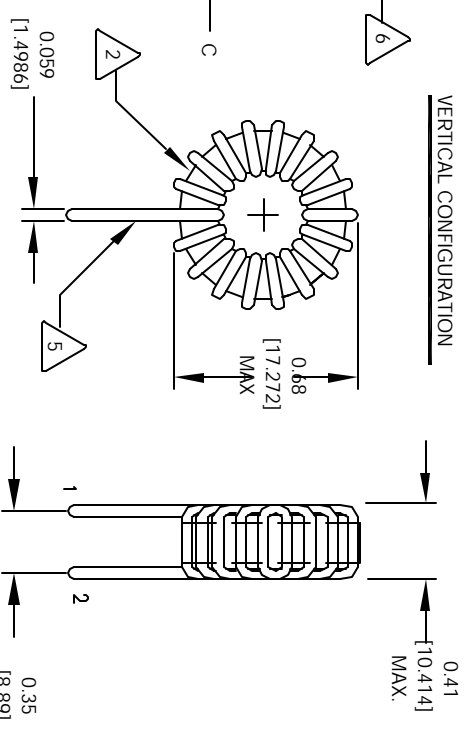
REV	ECN	DESCRIPTION	DATE	BY	DATE
A		PRODUCTION RELEASE	9/08/04	JLU	9/08/04



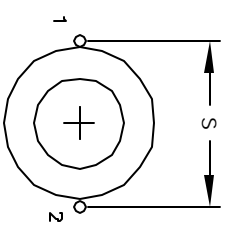
SCHEMATIC



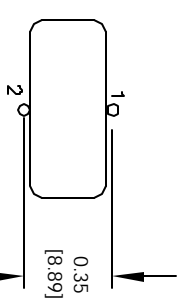
HORIZONTAL CONFIGURATION



VERTICAL CONFIGURATION



MOUNTING HOLES PATTERN



MOUNTING HOLES PATTERN

6 WHERE SHOWN, USING A PERMANENT MARKING METHOD IF APPLICABLE, MARK PART NUMBER AND REVISION

5 FLUSH WITH THE COIL EDGE, AS SHOWN REMOVE INSULATION AND TIN LEADS APPROX. 0.25 INCH

4 WIND WIRE TO CORE EVENLY SPACED CONSTRUCTION:

3 HI-POT TEST FOR WIRE TO CORE = 500 VDC  
 INDUCTANCE @ ± 20% RATED CURRENT = 0.24 uH  
 DC CURRENT RATING = 28.5 AMPS MAX  
 DCR = 1.0 MILLI-OHMS, MAX  
 INDUCTANCE @ 0 AMPS = 0.3 uH, ± 20%, 1 KHZ., 0.25 Vrms  
 SPECIFICATIONS @ 25 °C

2 WIRE: UL RECOGNIZED 130°C RATED MAGNET WIRE  
 CORE: COATED MICROMETAL IRON POWDER

1 CORE COATING RATING CLASS B (130°) REQUIRED  
 MATERIAL: UL RECOGNIZED 94V-0 FOR FLAMMABILITY  
 NOTES: UNLESS OTHERWISE SPECIFIED, TOROIDAL INDUCTOR

PARTS LIST

CODE IDENT	MFG. P/N	DESCRIPTION	ITEM NO.
AUTOCAD	X		
SOLIDWORKS			
SIGN	DATE		
DRAWN	6/08/04		
CHKD	6/08/04		
ENGR	6/08/04		
APPR	6/08/04		

COILS.COM, INC  
 1510 E. Edinger Ave.  
 Unit B, Santa Ana, CA 92705

High Current Toroidal Inductors  
 Vertical & Horizontal

SCALE: **B** SIZE: **1/8" = 1"** J20-R3V

2=1 SHEET 1 OF 1