

The information contained in this drawing is the sole property of CWS Coil Winding Specialist. Any reproduction in part or whole without written permission of CWS Coil Winding Specialist is prohibited.

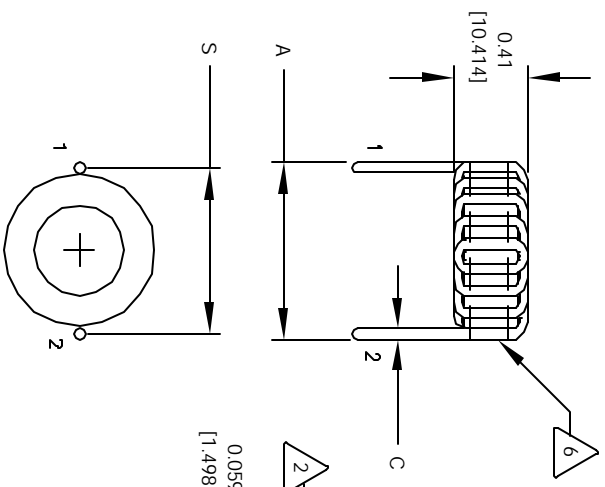
REVISION HISTORY

| REV | ECN | DESCRIPTION        | DATE    | BY  | DATE    |
|-----|-----|--------------------|---------|-----|---------|
| A   |     | PRODUCTION RELEASE | 9/08/04 | JLU | 9/08/04 |

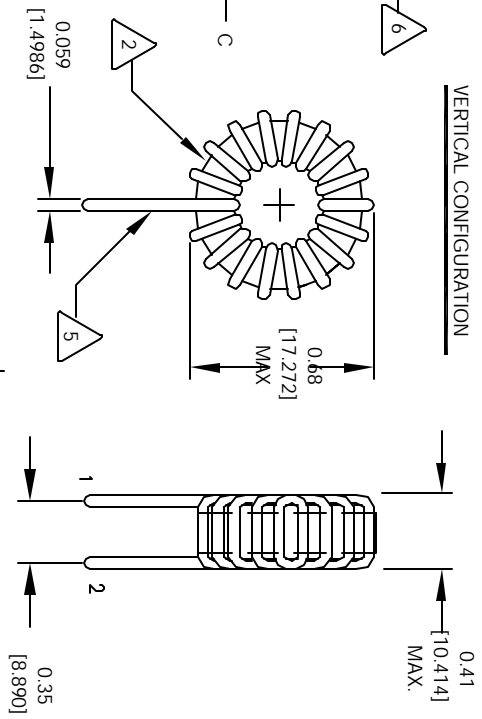


SCHEMATIC

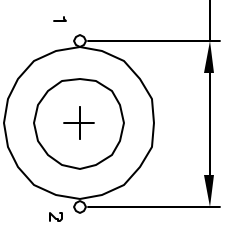
HORIZONTAL CONFIGURATION



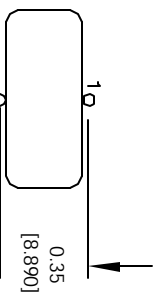
VERTICAL CONFIGURATION



MOUNTING HOLES PATTERN



MOUNTING HOLES PATTERN



6 WHERE SHOWN, USING A PERMANENT MARKING METHOD IF APPLICABLE, MARK PART NUMBER AND REVISION

5 FLUSH WITH THE COIL EDGE, AS SHOWN REMOVE INSULATION AND TIN LEADS APPROX. 0.25 INCH

4 WIND WIRE TO CORE EVENLY SPACED CONSTRUCTION:

3 HI-POT TEST FOR WIRE TO CORE = 500 VDC  
 INDUCTANCE @ ± 20% RATED CURRENT = 0.41 uH  
 DC CURRENT RATING = 24.7 AMPS MAX  
 DCR = 1.2 MILLI-OHMS, MAX  
 INDUCTANCE @ 0 AMPS = 0.5 uH, ± 20%, 1 KHZ., 0.25 Vrms  
 SPECIFICATIONS @ 25 °C

2 WIRE: UL RECOGNIZED 130°C RATED MAGNET WIRE  
 CORE: COATED MICROMETAL IRON POWDER

1 CORE COATING RATING CLASS B (130°) REQUIRED  
 MATERIAL: UL RECOGNIZED 94V-0 FOR FLAMMABILITY  
 NOTES: UNLESS OTHERWISE SPECIFIED, TOROIDAL INDUCTOR

|  |  |
|--|--|
| UNLESS OTHERWISE SPECIFIED                     | UNLESS OTHERWISE SPECIFIED                     |
| TOLERANCE PER ANG 1/16 IN                      | TOLERANCE PER ANG 1/16 IN                      |
| ALL DIMENSIONS ARE IN INCHES AND (MILLIMETERS) | ALL DIMENSIONS ARE IN INCHES AND (MILLIMETERS) |
| TOLERANCE INCHES ±0.005                        | TOLERANCE INCHES ±0.005                        |
| TOLERANCE METERS ±0.127                        | TOLERANCE METERS ±0.127                        |
| ANGLE PROJECTION                               | ANGLE PROJECTION                               |
| DO NOT SCALE DRAWING                           | DO NOT SCALE DRAWING                           |

| CODE IDENT              | MFG. P/N | DESCRIPTION  | ITEM NO.     |
|-------------------------|----------|--|--------------|
| AUTOCAD SOLIDWORKS SIGN | X        | COILS COM, INC<br>www.coilws.com   |              |
| DATE                    | DATE     | CWS Coil Winding Specialist<br>1510 E. Edinger Ave.<br>Unit B, Santa Ana, CA 92705 |              |
| DATE                    | DATE     | High Current Toroidal Inductors<br>Vertical & Horizontal                           |              |
| DATE                    | DATE     | J20-R5V  | REV A        |
| DATE                    | DATE     | SCALE 2=1  | SHEET 1 OF 1 |