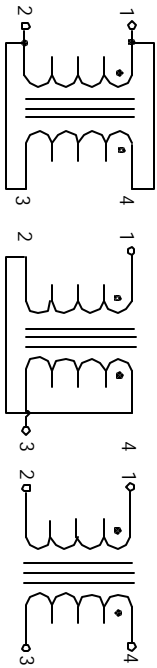


The information contained in this drawing is the sole property of CWS Coil Winding Specialist. Any reproduction in part or whole without written permission of CWS Coil Winding Specialist is prohibited.



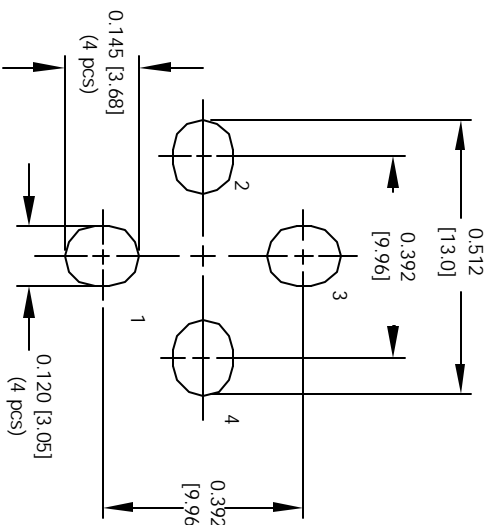
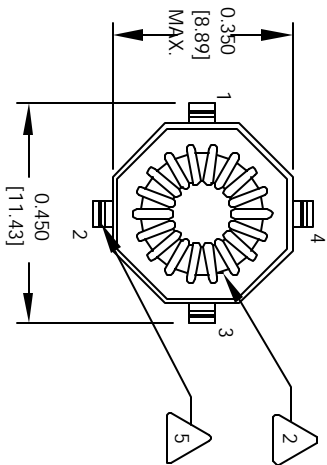
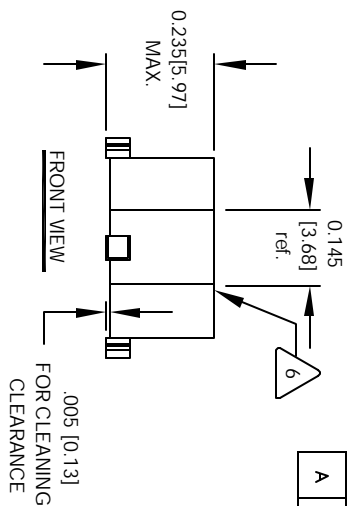
- 6 AND REVISION WHERE SHOWN IF APPLICABLE MARK PART NUMBER
- 5 REMOVE INSULATION AND TIN LEADS
- 4 WIND ON TO CORE AND EVENLY SPACED CONSTRUCTION:

TO INSURE INTERGRITY OF WINDING SEPARATION, HI-POT TEST FOR WINDING TO WINDING = 300 VDC MIN.
 MAX DCR IS ± 15% OF TYPICAL VALUE.
 SERIES DCR = 0.0233 OHMS TYP @ 20 °C
 SERIES RMS CURRENT = 4.11 AMPS.
 PARALLEL: (1-4 - 3-2), SERIES: (1 - 3) TIE (2 - 4), @ 100 KHZ, 0.250 VRMS, 0.0 ADC,
 SERIES OPEN CIRCUIT INDUCTANCE = 5.06 uH ± 25 %,
 MAX DCR IS ± 15% OF TYPICAL VALUE
 PARALLEL DCR = 0.0058 OHMS TYP @ 20 °C,
 DELTA TEMP 40 °C, AMBIENT TEMP 85 °C,
 PARALLEL RMS CURRENT = 8.22 AMPS @ PARALLEL (1-4 - 3-2), SERIES (1 - 3) TIE (2 - 4), @ 100 KHZ, 0.250 VRMS, 0.0 ADC,
 PARALLEL OPEN CIRCUIT INDUCTANCE = 1.26 uH ± 25 %,
 PARALLEL RATED INDUCTANCE = 1.0 uH

- 3 SPECIFICATIONS:

WIRE: UL RECOGNIZED 130°C RATING MAGNET WIRE
 CWS BYTEMARK OR OTHER APPROVED PART
 CORE: TOROID

- 1 BOBBIN RATING CLASS B (130°C) REQUIRED
 MATERIAL: UL RECOGNIZED 94V-0 FOR FLAMMABILITY
 NOTES: UNLESS OTHERWISE SPECIFIED.



REVISION HISTORY		DESCRIPTION		SIGN & DATE	
REV	ECN	BR	DATE	CHK	DATE
A		PPR	7/08/04	LJU	7/08/04

QTY	CODE	MFG. P/N	DESCRIPTION	ITEM NO.
IDENT				
			PARTS LIST	

UNLESS OTHERWISE SPECIFIED		TITLE	
DIMENSIONS AND TOLERANCE PER ANSI Y14.5M AND UNLESS NOTED	TOLERANCE INCHES	SIZE [DIM. NO.]	SCALE
±.0005	±.0005	B	4=1
±.0010	±.0010		
±.0025	±.0025		
ANGLE PRECISION	±.0030°		
DO NOT SCALE DRAWING			