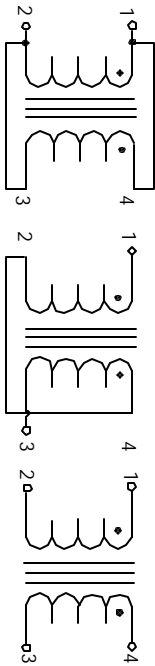


The information contained in this drawing is the sole property of CMS Coil Winding Specialist. Any reproduction in part or whole without written permission of CMS Coil Winding Specialist is prohibited.



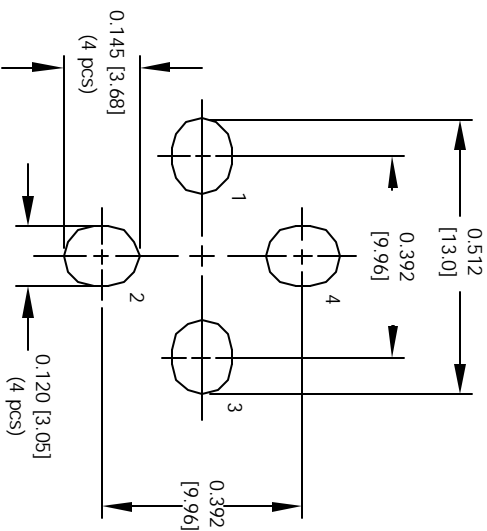
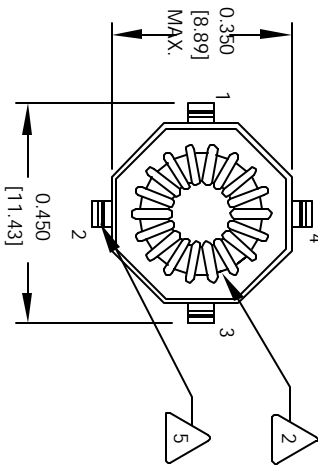
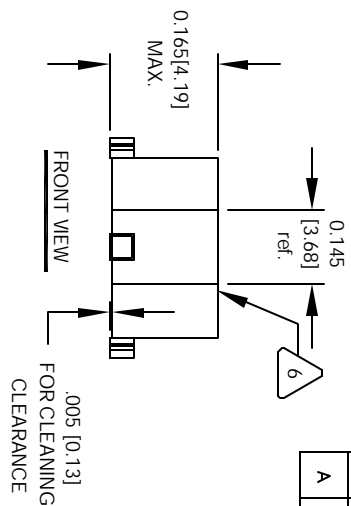
AND REVISION WHERE SHOWN
IF APPLICABLE MARK PART NUMBER

- 6 REMOVE INSULATION AND TIN LEADS
- 5 WIND ON TO CORE AND EVENLY SPACED
- 4 CONSTRUCTION:

TO INSURE INTERGRITY OF WINDING SEPARATION
HI-POT TEST FOR WINDING TO WINDING = 300 VDC MIN.
MAX DCR IS ± 15% OF TYPICAL VALUE.
MAX DCR = 2.778 OHMS TYP @ 20 °C
SERIES RMS CURRENT = 0.38 AMPS.
PARALLEL: (1-4-3-2), SERIES: (1-3) TIE (2-4),
@ 100 KHZ, 0.250 VRMS, 0.0 ADC,
SERIES OPEN CIRCUIT INDUCTANCE = 409.50 uH ± 25 %
MAX DCR IS ± 15% OF TYPICAL VALUE
PARALLEL DCR = 0.695 OHMS TYP @ 20 °C,
DELTA TEMP 40 °C, AMBIENT TEMP 85 °C.
PARALLEL RMS CURRENT = 0.75 AMPS @
PARALLEL: (1-4-3-2), SERIES: (1-3) TIE (2-4),
@ 100 KHZ, 0.250 VRMS, 0.0 ADC,
PARALLEL OPEN CIRCUIT INDUCTANCE = 102.38 uH ± 25 %,
PARALLEL RATED INDUCTANCE = 100.0 uH

- 3 SPECIFICATIONS:

- 2 WIRE: UL RECOGNIZED 130°C RATING MAGNET WIRE
CWS BYTEMARK OR OTHER APPROVED PART
CORE: TOROID
- 1 BOBBIN RATING CLASS B (130°C) REQUIRED
MATERIAL: UL RECOGNIZED 94V-0 FOR FLAMMABILITY
NOTES: UNLESS OTHERWISE SPECIFIED.



REVISION HISTORY		REV		ECN		DESCRIPTION		BY		DATE	
A							PRODUCTION RELEASE	RPR	7/09/04	JLU	7/09/04

UNLESS OTHERWISE SPECIFIED	
DIMENSIONS AND TOLERANCE PER ANSI Y14.5M AND DIMENSIONS ARE IN INCHES AND (MILLIMETERS).	TOLERANCE INCHES XXX±.010 XX±.015 XXX±.254 XX±.635
ANGLE PROJECTION	45°/30°
DO NOT SCALE DRAWING	

QTY	CODE	MFG. P/N	DESCRIPTION	ITEM NO.
	IDENT			
PARTS LIST				
AUTOPART		X		
SCALEWORKS		SIGN		
DATE	DATE	TITLE		
7/06/04	7/06/04	Parallel Series Inductor		
APPR	JLU	7/06/04	SIZE	REV
			B	A
			CX100-2-HF	
			SCALE	SHEET
			4=1	1 OF 1