

The information contained in this drawing is the sole property of Coil Winding Specialist, Inc. Any reproduction in part or whole without written permission of Coil Winding Specialist, Inc. is prohibited.

DIMENSIONAL TOLERANCES INCHES (MM)

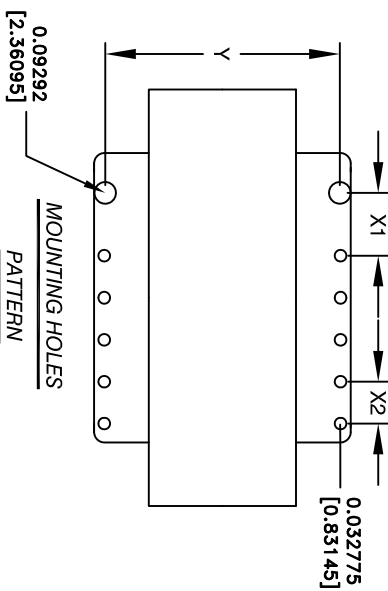
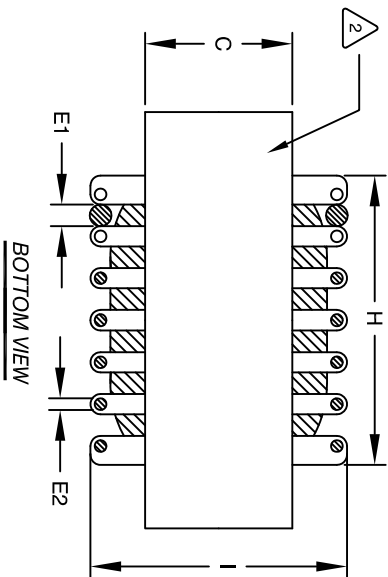
A	B	C	D1	D2	E1	E2	F	G	H	I	X1	X2	Y
MAX	2.244	0.9866	0.50	0.25	0.0808	0.0285	1.496	1.65	1.535	1.77	0.293	0.19	1.562
MIN	2.244	0.9866	0.50	0.25	0.0808	0.0285	1.496	1.65	1.535	1.77	0.293	0.19	1.562
REF	[57.00]	[57.00]	[22.00]	[6.35]	[2.053]	[0.729]	[38.00]	[42.00]	[39.00]	[45.00]	[7.44]	[4.84]	[39.68]

REVISION HISTORY

REV	ECN	DESCRIPTION	BY	DATE	CHK	DATE
C			JL	11/25/17	JL	11/25/17

DIMENSIONAL TOLERANCE

	mm	Inch
C1	12.20 ± 1.50	0.48 ± 0.06
C2	11.10 ± 1.00	0.44 ± 0.04
D1	6.0 (TYP)	0.23 (TYP)
D2	0.9 (TYP)	0.04 (TYP)
L	58.0 MAX	2.29 MAX
W	58.0 MAX	2.29 MAX
H	34.0 MAX	1.34 MAX



DC-BIAS	L
0A	375 uH
5A	348 uH
10A	306 uH
15A	266 uH
20A	222 uH
25A	190 uH

8 APPLICATION: OUTPUT CHOKE, HIGH DC-BIAS INDUCTOR, INPUT FILTER

7 BUILT TO ROHS COMPLIANCE AND LEAD FREE

6 MARK PART NUMBER AND REVISION WHERE SHOWN

5 VANISH PART AND CURE  
APPLY SILICON WHERE SHOWN

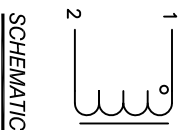
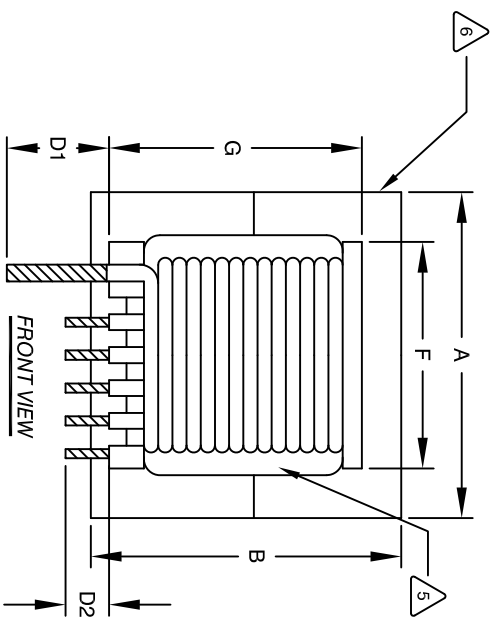
4 WRAP TAPE AROUND CORES WITH CORES AND NOMEK SPACERS ASSEMBLE PRE FORMED FLAT HELICAL COIL CONSTRUCTION

3 RECOMMENDED OPERATING TEMP: -40°C TO 85°C AT 55 °C AMBIENT HI-POT TEST FOR WINDING TO CORE ISOLATION: 1000VDC @ 2mA, 1 MIN INTERWINDING CAPACITANCE @ SRF = 85 pF (TYP) [12]@SRF=38 KIL-O-OHM (TYP) SRF=900 KHZ (TYP) RATED CURRENT: 25 AMPS DCR= 25.0 MILLI-OHM MAX., USING GW INSTEK GOM-801H OR EQUAL L@DC BIAS: SEE TABLE ON RIGHT. L= 375uH NOM. MEASURED AT 1 KHZ, 0.25V, ZERO DC BIAS SPECIFICATIONS:

2 VANISH DOLPH or EQUAL SILICON DOW COIRING OR EQUAL NOMEK SPACERS FOR SIDE AND CENTER LEG OF CORES OUTER WRAP: 3M GLASS OR EQUAL WIRE: UL RECOGNIZED 200°C RATED MAGNET WIRE CORE: COMPACTED POWDERED CORE

1 INSULATION CLASS 200°C REQUIRED MATERIAL: UL RECOGNIZED 94V-0 FOR FLAMMABILITY

NOTES: UNLESS OTHERWISE SPECIFIED, READ FROM BOTTOM UP.  
CAGE CODE: 5DME2



SCHEMATIC

UNLESS OTHERWISE SPECIFIED
DIMENSIONING AND TOLERANCE PER ANSI Y14.5M
ALL DIMENSIONS ARE IN INCHES AND [DIMENSIONS]
TOLERANCE INCHES: <math>\varnothing = \pm 0.30^{\circ}</math>
TOLERANCE METRICS: <math>XXX = \pm 0.10</math>, <math>XX = \pm 0.20</math>, <math>X = \pm 0.51</math>
ANGLE PROJECTION <math>\varnothing</math>
DO NOT SCALE DRAWING

QTY	CODE IDENT	MFG. P/N	DESCRIPTION	ITEM NO.
			PARTS LIST	
			High Current Helical Inductor	
			375 uH, 25 Amps, Vertical	
			CWS-11189	