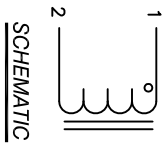


The information contained in this drawing is the sole property of Coil Winding Specialist, Inc. Any reproduction in part or whole without written permission of Coil Winding Specialist, Inc. is prohibited.

REVISION HISTORY

REV	ECN	DESCRIPTION	BY	DATE	CHK	DATE
A		PRODUCTION RELEASE	RCL	6/22/11	JCL	3/21/11
A1		DCR VALUE CHANGED	AK	6/21/12	JLAV	6/21/12
A2		UPDATE SPEC.	TN	09/29/17	JLAV	09/29/17



SCHEMATIC

- 1 _____
- 2 _____
- 3 _____
- 4 _____
- 5 _____
- 6 _____

APPLICATION: OUTPUT CHOKE, HIGH DC-BIAS INDUCTOR, INPUT FILTER

BUILT TO ROHS COMPLIANCE AND LEAD FREE.

MARK PART NUMBER AND REVISION WHERE SHOWN

VANISH PART AND CURE
APPLY SILICON WHERE SHOWN
WRAP TAPE AROUND CORES
WITH CORES AND NOMEX SPACERS
ASSEMBLE PRE FORMED FLAT HELICAL COIL

CONSTRUCTION

WEIGHT: 499.1 GRAM (TYP)
MAX INDUCTOR TEMP RATING: 200°C
RECOMMENDED OPERATING TEMP: -40°C TO 85°C
HI-POT TEST FOR WINDING TO CORE ISOLATION: 1000VDC @ 2mA, 1 MIN
INTERWINDING CAPACITANCE @ 10KHZ = 16.84pF (TYP)
|Z|@SRF=5.2 KILO-OHM (TYP)
SRF=3.0 MHZ (TYP)
RATED CURRENT: 60 AMPS
DCR = 7.0 MILLI-OHM MAX.
L@DC BIAS: SEE TABLE ON RIGHT.
L = 170 uH ± 15%, MEASURED AT 10 KHZ, 0.25V, ZERO DC BIAS

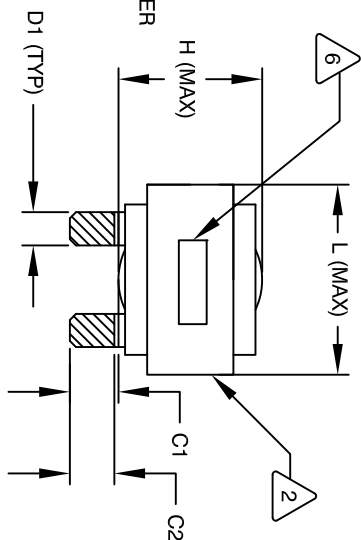
SPECIFICATIONS:

VANISH DOLPH or EQUAL
SILICON DOW CORNING OR EQUAL
NOMEX SPACERS FOR SIDE AND CENTER LEG OF CORES
OUTER WRAP: 3M GLASS OR EQUAL
WIRE: UL RECOGNIZED 200°C RATED MAGNET WIRE
CORE: COMPACTED POWDERED CORE

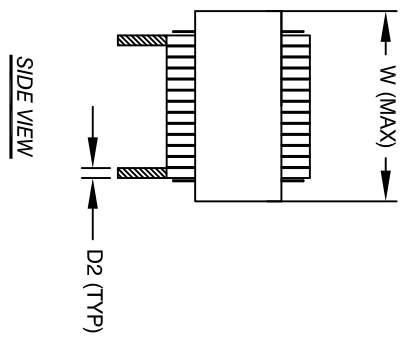
INSULATION CLASS 200°C REQUIRED
MATERIAL: UL RECOGNIZED 94V-0 FOR FLAMMABILITY

NOTES: UNLESS OTHERWISE SPECIFIED, READ FROM BOTTOM UP.

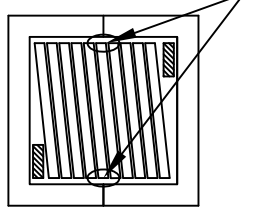
CAGE CODE: 5DME2



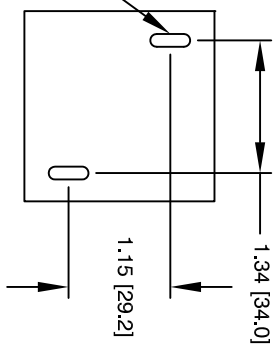
FRONT VIEW



SIDE VIEW



BOTTOM VIEW



MOUNTING HOLES PATTERN

DIMENSIONAL TOLERANCE

	mm	Inch
C1	13.87 ± 1.50	0.57 ± 0.06
C2	11.98 ± 1.00	0.47 ± 0.04
D1	7.5 (TYP)	0.30 (TYP)
D2	1.0 (TYP)	0.04 (TYP)
L	58.0 MAX	2.29 MAX
W	58.0 MAX	2.29 MAX
H	36.0 MAX	1.41 MAX

DC-BIAS	L
0A	168.1uH
5A	167.7uH
10A	164.5uH
15A	159.7uH
20A	151.6uH
25A	142.1uH
30A	136.0uH
40A	116.0uH
50A	103.0uH
60A	83.0uH

QTY	CODE IDENT	MFG. P/N	DESCRIPTION	ITEM NO.

AUTOCAD SOLIDWORKS		PARTS LIST	
DRAWN	RL	DATE	2/11/11
ENGR.	JLAV	DATE	2/11/11
APPR.	JLAV	DATE	2/11/11

TITLE: High Current Helical Inductor
170 uH, 60 Amps, Horizontal

UNLESS OTHERWISE SPECIFIED	
DIMENSIONING AND TOLERANCE PER ANSI Y14.5M AND DIMETERS.	
TOLERANCE INCHES: .XX ± .010 .X ± .020 .XXX ± .254	± .40° 30'
TOLERANCE METRIC: .XX ± .51	± .40° 30'
ANGLE PROJECTION	DO NOT SCALE DRAWING

SCALE	NOT_TO_SCALE	SHEET 1 OF 1
B		