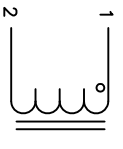


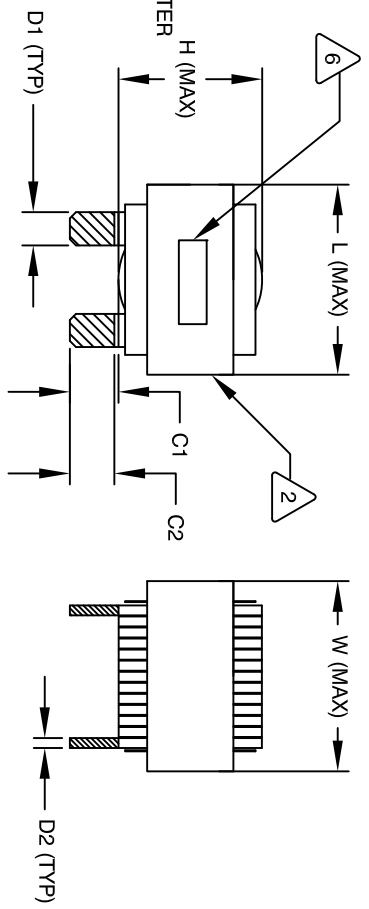
The information contained in this drawing is the sole property of Coil Winding Specialist, Inc. Any reproduction in part or whole without written permission of Coil Winding Specialist, Inc. is prohibited.

REVISION HISTORY

REV	ECN	DESCRIPTION	BY	DATE	CHK	DATE
A		PRODUCTION RELEASE	RCL	6/22/11	JCL	3/21/11
A1		UPDATE SPEC.	TN	10/02/17	JL	10/02/17



SCHEMATIC



DIMENSIONAL TOLERANCE

	mm	Inch
C1	13.37 ± 1.50	0.53 ± 0.06
C2	12.31 ± 1.00	0.48 ± 0.04
D1	7.50 (TYP)	0.30 (TYP)
D2	1.50 (TYP)	0.06 (TYP)
L	58.0 MAX	2.29 MAX
W	58.0 MAX	2.29 MAX
H	36.0 MAX	1.41 MAX

DC-BIAS	L
0A	86.3uH
5A	86.4uH
10A	85.5uH
15A	84.0uH
20A	82.1uH
25A	79.6uH
30A	74uH
40A	71uH
50A	63uH
60A	59uH
70A	49uH
85A	43uH

- 1 APPLICATION: OUTPUT CHOKE, HIGH DC-BIAS INDUCTOR, INPUT FILTER
- 2 BUILT TO ROHS COMPLIANCE AND LEAD FREE.
- 3 MARK PART NUMBER AND REVISION WHERE SHOWN
- 4 VANISH PART AND CURE
APPLY SILICON WHERE SHOWN
WRAP TAPE AROUND CORES
WITH CORES AND NOMEX SPACERS
ASSEMBLE PRE FORMED FLAT HELICAL COIL
CONSTRUCTION
- 5 WEIGHT: 503.3 GRAM (TYP)
MAX INDUCTOR TEMP RATING: 200°C
RECOMMENDED AMBIENT OPERATING TEMP: -40°C TO 85°C
HI-POT TEST FOR WINDING TO CORE ISOLATION: 1000VDC @ 2mA, 1 MIN
INTERWINDING CAPACITANCE @ 10KHZ = 19.06pF (TYP)
|Z|@SRF=4.4 KILO-OHM (TYP)
SRF=4.0 MHZ (TYP)
RATED CURRENT: 85 AMPS
DCR = 3.0 MILLI-OHM MAX.
L@DC BIAS: SEE TABLE ON RIGHT.
L = 80 uH ± 15%, MEASURED AT 10 KHZ, 0.25V, ZERO DC BIAS
SPECIFICATIONS:
- 6 VANISH DOLPH or EQUAL
SILICON DOW CORNING OR EQUAL
NOMEX SPACERS FOR SIDE AND CENTER LEG OF CORES
OUTER WRAP: 3M GLASS OR EQUAL
WIRE: UL RECOGNIZED 200°C RATED MAGNET WIRE
CORE: COMPACTED POWDERED CORE

BOTTOM VIEW

MOUNTING HOLES PATTERN

- 1 INSULATION CLASS 200°C REQUIRED
MATERIAL: UL RECOGNIZED 94V-0 FOR FLAMMABILITY
- 2 NOTES: UNLESS OTHERWISE SPECIFIED, READ FROM BOTTOM UP.
CAGE CODE: 5DME2

QTY	CODE IDENT	MFG. P/N	DESCRIPTION	ITEM NO.
			High Current Helical Inductor 80 uH, 85 Amps, Horizontal	

UNLESS OTHERWISE SPECIFIED	DRAWN	DATE	APPR.	DATE
DIMENSIONING AND TOLERANCE PER ANSI Y14.5M ALL DIMENSIONS ARE IN INCHES AND [DIMETERS]. TOLERANCE INCHES: $\phi = \pm 0.30$ $\times .XXX = \pm 0.10$ $\times .X = \pm 0.20$ TOLERANCE METRCS: $\phi = \pm 0.30$ $\times .XXX = \pm .254$ $\times .X = \pm .51$	RL	2/11/11	JLJU	2/11/11

SCALE	NOT_TO_SCALE	SHEET	1 OF	1
B				