

The information contained in this drawing is the sole property of Coil Winding Specialist, Inc. Any reproduction in part or whole without written permission of Coil Winding Specialist, Inc. is prohibited.

REVISION HISTORY

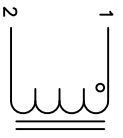
REV	ECN	DESCRIPTION	DATE	CHK	DATE
A		PRODUCTION RELEASE	2/13/11	JCL	2/13/11
B		REVISED DIMENSIONAL TOLERANCE	09/06/18	JL	09/06/18

SIGN & DATE

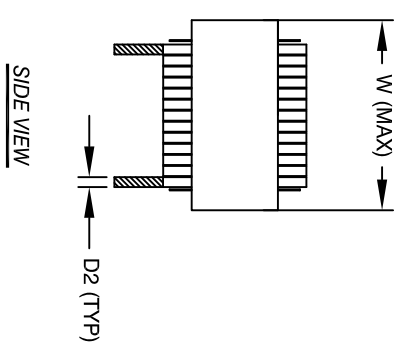
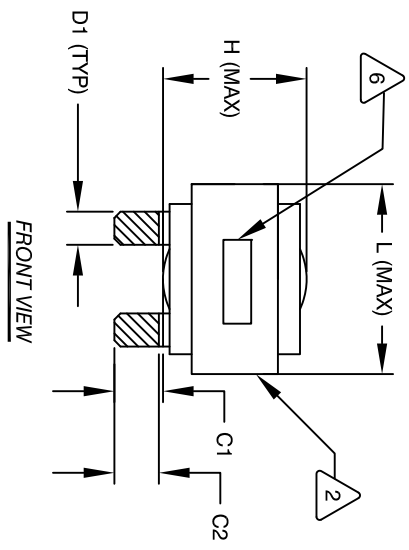
REV	DATE	CHK	DATE
RL	2/13/11	JCL	2/13/11
TN	09/06/18	JL	09/06/18

DIMENSIONAL TOLERANCE

	mm	inch
C1	13±1.50	0.51±0.06
C2	12±1.50	0.47±0.06
D1	7.60 (TYP)	0.30 (TYP)
D2	2.60 (TYP)	0.10 (TYP)
L	57.0 MAX	2.25 MAX
W	58.0 MAX	2.29 MAX
H	37.0 MAX	1.46 MAX
P1	27.60 TYP	1.09 TYP
P2	34.40 TYP	1.35 TYP

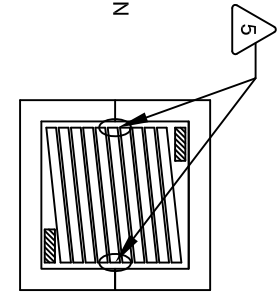


SCHEMATIC

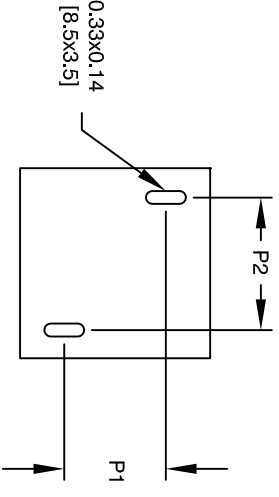


DC-BIAS

DC-BIAS	L
0A	19.1 uH
5A	18.2 uH
10A	17.9 uH
15A	17.6 uH
20A	17.2 uH
25A	16.7 uH
30A	16.4 uH
40A	15.7 uH
50A	14.8 uH
60A	13.9 uH
70A	12.9 uH
80A	12.2 uH
90A	11.5 uH
100A	10.6 uH



BOTTOM VIEW



MOUNTING HOLES PATTERN

- BUILT TO ROHS COMPLIANCE AND LEAD FREE.
- MARK PART NUMBER AND REVISION WHERE SHOWN
- VANISH PART AND CURE
APPLY SILICON WHERE SHOWN
- WRAP TAPE AROUND CORES WITH CORES AND NOMEX SPACERS ASSEMBLE PRE FORMED FLAT HELICAL COIL CONSTRUCTION
- WEIGHT: 412 GRAM (TYP)
MAX INDUCTOR TEMP RATING: 200°C
RECOMMENDED OPERATING TEMP: -40°C TO 85°C
HI-POT TEST FOR WINDING TO CORE ISOLATION, 1000VDC @ 2mA, 1 MIN
INTERWINDING CAPACITANCE @ 10KHZ = 19PF (TYP)
|z|@SRF=3.1 KILO-OHM (TYP)
SRF=8.4 MHZ (TYP)
RATED CURRENT: 160 AMPS
DCR = 1.1 MILLIOHM MAX.
L@DC BIAS: SEE TABLE ON RIGHT.
L = 20uH ± 15%, MEASURED AT 10 KHZ, 0.25V, ZERO DC BIAS SPECIFICATIONS:
- VANISH DOLPH OR EQUAL
SILICON DOW CORNING OR EQUAL
NOMEX SPACERS FOR SIDE AND CENTER LEG OF CORES
OUTER WRAP: 3M GLASS OR EQUAL
WIRE: UL RECOGNIZED 200°C RATED MAGNET WIRE
CORE: COMPACTED POWDERED CORE

- INSULATION CLASS 200°C REQUIRED MATERIAL: UL RECOGNIZED 94V-0 FOR FLAMMABILITY

NOTES: UNLESS OTHERWISE SPECIFIED, READ FROM BOTTOM UP.

QTY	CODE IDENT	MFG. P/N	DESCRIPTION	ITEM NO.
			PARTS LIST	
			www.coilws.com	
			Coil Winding Specialist, Inc.	
			353 W. GROVE AVE	
			ORANGE, CA 92665	

UNLESS OTHERWISE SPECIFIED
DIMENSIONING AND TOLERANCE PER ANSI Y14.5M
ALL DIMENSIONS ARE IN INCHES AND [MILLIMETERS].
TOLERANCE INCHES: \pm = ±0.30°
TOLERANCE METERS: \pm = ±0.25°
ANGLE PROJECTION \angle = ±0.30°
DO NOT SCALE DRAWING

AUTOCAD SOLIDWORKS	DATE	DATE
RL	2/11/11	2/11/11
JLJU	2/11/11	2/11/11
JLJU	2/11/11	2/11/11

SIZE	DWG. NO.	SCALE	SHEET	OF
B	ES55204-200M-160AH	NOT_TO_SCALE	1	1