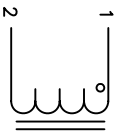


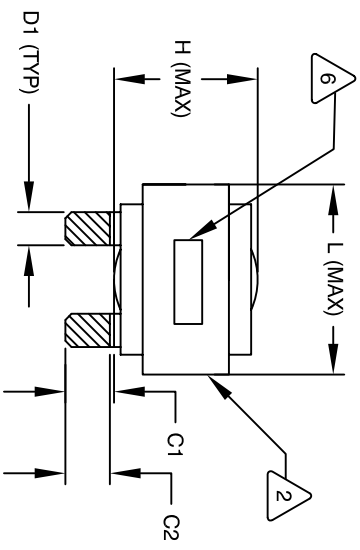
The information contained in this drawing is the sole property of Coil Winding Specialist, Inc. Any reproduction in part or whole without written permission of Coil Winding Specialist, Inc. is prohibited.

REVISION HISTORY

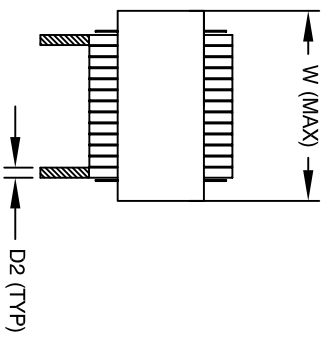
REV	ECN	DESCRIPTION	DATE	BY	DATE	CHK	DATE
A		PRODUCTION RELEASE	2/13/11	RL	2/13/11	JCL	2/13/11



SCHEMATIC



FRONT VIEW



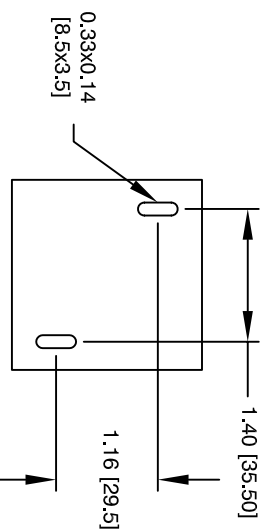
SIDE VIEW

DIMENSIONAL TOLERANCE

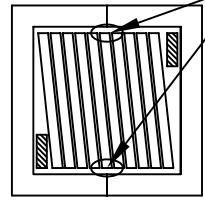
	mm	Inch
C1	13.99±1.50	0.55 ± 0.06
C2	12.60±1.00	0.50 ± 0.04
D1	7.75 (TYP)	0.31 (TYP)
D2	2.50(TYP)	0.10 (TYP)
L	57.0 MAX	2.25 MAX
W	58.0 MAX	2.29 MAX
H	36.0 MAX	1.42 MAX

DC-BIAS

DC-BIAS	L
0A	19.1 uH
5A	18.2 uH
10A	17.9 uH
15A	17.6 uH
20A	17.2 uH
25A	16.7 uH
30A	16.4 uH
40A	15.7 uH
50A	14.8 uH
60A	13.9 uH
70A	12.9 uH
80A	12.2 uH
90A	11.5 uH
100A	10.6 uH



MOUNTING HOLES PATTERN



BOTTOM VIEW

- 7 BUILT TO RoHS COMPLIANCE AND LEAD FREE.
- 6 MARK PART NUMBER AND REVISION WHERE SHOWN
- 5 VANISH PART AND CURE
APPLY SILICON WHERE SHOWN

- 4 WRAP TAPE AROUND CORES WITH CORES AND NOMEX SPACERS ASSEMBLE PRE FORMED FLAT HELICAL COIL CONSTRUCTION
WEIGHT: 412 GRAM (TYP)
RECOMMENDED OPERATING TEMP: -40°C TO 85°C AT 55 °C AMBIENT
H-POT TEST FOR WINDING TO CORE ISOLATION, 1000VDC @ 2mA, 1 MIN
INTERWINDING CAPACITANCE @ 10KHZ = 19pF (TYP)
|z|@SRF=3.1 KILO-OHM
SRF=8.4 MHZ
RATED CURRENT: 160 AMPS
DCR = 1.0 MILLI-OHM MAX., USING GW INSTEK GOM-801H OR EQUAL
L@DC BIAS: SEE TABLE ON RIGHT.
L = 20uH ± 15%, MEASURED AT 10 KHZ, 0.25V, ZERO DC BIAS
SPECIFICATIONS:

- 2 VANISH DOLPH or EQUAL
SILICON DOW CORNING OR EQUAL
NOMEX SPACERS FOR SIDE AND CENTER LEG OF CORES
OUTER WRAP: 3M GLASS OR EQUAL
WIRE: UL RECOGNIZED 200°C RATED MAGNET WIRE
CORE: COMPACTED POWDERED CORE

- 1 INSULATION CLASS 200°C REQUIRED
MATERIAL: UL RECOGNIZED 94V-0 FOR FLAMMABILITY

NOTES: UNLESS OTHERWISE SPECIFIED, READ FROM BOTTOM UP.

QTY	CODE IDENT	MFG. P/N	DESCRIPTION	ITEM NO.
			PARTS LIST	
			www.coilw.com sales@coilw.com	
			Coil Winding Specialist, Inc. 353 W. GROVE AVE ORANGE, CA 92665	
			TITLE: High Current Helical Inductor 20 uH, 160 Amps, Horizontal	
			SCALE: NOT TO SCALE	
			SIZE: DIM. NO. ES55204-200M-160AH	
			APPR: JLJU	
			DATE: 2/11/11	
			SCALE: NOT TO SCALE	
			SHEET: 1 OF 1	