

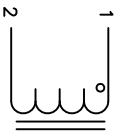
The information contained in this drawing is the sole property of Coil Winding Specialist, Inc. Any reproduction in part or whole without written permission of Coil Winding Specialist, Inc. is prohibited.

REVISION HISTORY

REV	ECN	DESCRIPTION	DATE
A		PRODUCTION RELEASE	3/21/11
B		EDITS	6/24/11
C		UPDATED ELECTRICAL SPEC.	11/19/18

SIGN & DATE

BY	DATE	CHK	DATE
RL	3/21/11	JCL	3/21/11
RL	6/24/11		
TN	11/19/18	JL	11/19/18



SCHEMATIC

- 8 APPLICATION: ENERGY STORAGE FILTER, SWINGING CHOKE
- 7 BUILT TO ROHS COMPLIANCE AND LEAD FREE.

- 6 MARK PART NUMBER AND REVISION WHERE SHOWN
- 5 VANISH PART AND CURE
- APPLY SILICON WHERE SHOWN

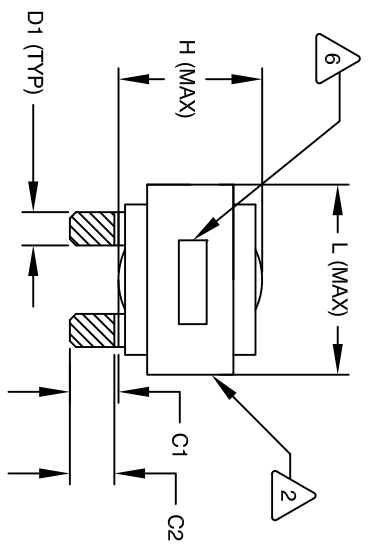
- 4 WRAP TAPE AROUND CORES
- WITH CORES AND NOMEX SPACERS
- ASSEMBLE PRE FORMED FLAT HELICAL COIL
- CONSTRUCTION

- 3 WEIGHT: 440 GRAM (TYP)
- MAX INDUCTOR TEMP RATING: 200°C
- RECOMMENDED OPERATING TEMP: -40°C TO 85°C
- HI-POT TEST FOR WINDING TO CORE ISOLATION, 1000VDC @ 2mA, 1 MIN
- INTERWINDING CAPACITANCE = 13pF TYP @ SRF
- |Z| = 26 KIL-OHMS TYP @ SRF
- SRF = 3.5 MHZ (TYP)
- RATED CURRENT: 40 AMPS
- DCR = 6.9 MILLIOHM MAX.
- L@DC BIAS: SEE TABLE ON RIGHT.
- L = 170 uH ± 15%, MEASURED AT 10 KHZ, 0.25V, ZERO DC BIAS
- SPECIFICATIONS @ 25°C:

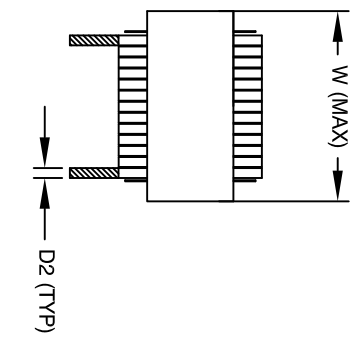
- 2 VANISH DOLPH or EQUAL
- SILICON DOW CORNING OR EQUAL
- NOMEX SPACERS FOR SIDE AND CENTER LEG OF CORES
- OUTER WRAP: 3M GLASS OR EQUAL
- WIRE: UL RECOGNIZED 200°C RATED MAGNET WIRE
- CORE: COMPACTED POWDERED CORE

- 1 INSULATION CLASS 200°C REQUIRED
- MATERIAL: UL RECOGNIZED 94V-0 FOR FLAMMABILITY

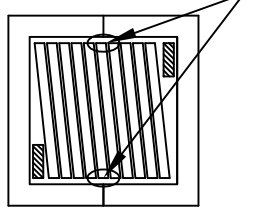
NOTES: UNLESS OTHERWISE SPECIFIED, READ FROM BOTTOM UP.
CAGE NO: 5DME2



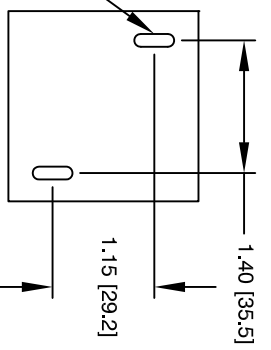
FRONT VIEW



SIDE VIEW



BOTTOM VIEW



MOUNTING HOLES PATTERN

DC-BIAS	L
0A	169 uH
5A	160 uH
10A	148 uH
15A	132 uH
20A	114 uH
25A	96 uH
30A	92 uH
35A	88 uH

PARTS LIST

QTY	CODE IDENT	MFG. P/N	DESCRIPTION	ITEM NO.
			www.coilws.com	
			Coil Winding Specialist, Inc.	
			353 W. GROVE AVE	
			ORANGE, CA 92665	

TITLE: High Current Helical Inductor
170 uH, 45 Amps, Horizontal

UNLESS OTHERWISE SPECIFIED	
DIMENSIONING AND TOLERANCE PER ANSI Y14.5M	
ALL DIMENSIONS ARE IN INCHES AND [MILLIMETERS].	
TOLERANCE INCHES: $\pm .010$.XX = $\pm .020$	$\angle = 40^{\circ} 30'$
TOLERANCE METERS: $\pm .254$.XX = $\pm .51$	$\angle = 40^{\circ} 30'$
ANGLE PROJECTION	
DO NOT SCALE DRAWING	

SCALE	NOT_TO_SCALE	SHEET	1 OF 1
B			