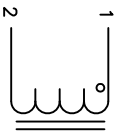


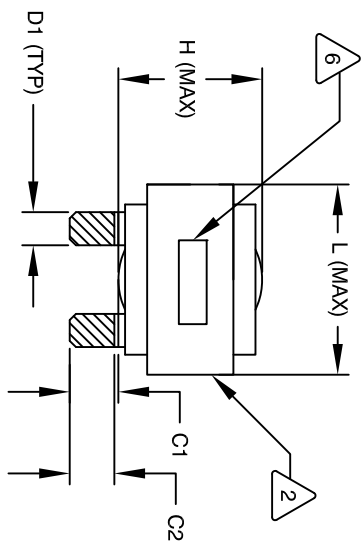
The information contained in this drawing is the sole property of Coil Winding Specialist, Inc. Any reproduction in part or whole without written permission of Coil Winding Specialist, Inc. is prohibited.

REVISION HISTORY

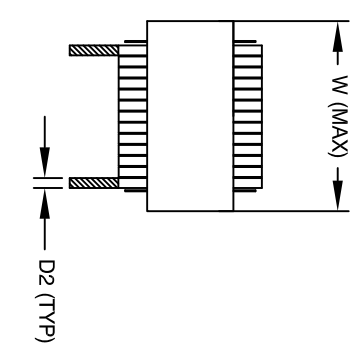
REV	ECN	DESCRIPTION	BY	DATE	CHK	DATE
A		PRODUCTION RELEASE	RL	3/21/11	JCL	3/21/11
B		EDITS	RCJ	6/24/11		



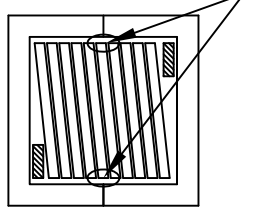
SCHEMATIC



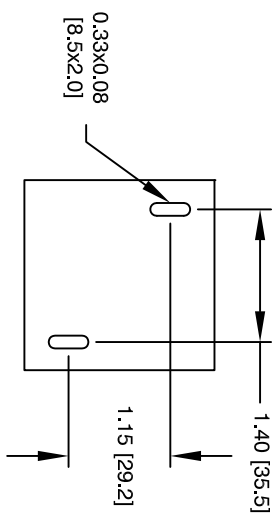
FRONT VIEW



SIDE VIEW



BOTTOM VIEW



MOUNTING HOLES PATTERN

DIMENSIONAL TOLERANCE

	mm	Inch
C1	13.71 ± 1.50	0.54 ± 0.06
C2	11.62 ± 1.00	0.46 ± 0.04
D1	7.50 (TYP)	0.30 (TYP)
D2	1.00 (TYP)	0.04 (TYP)
L	58.0 MAX	2.29 MAX
W	58.0 MAX	2.29 MAX
H	36.0 MAX	1.42 MAX

DC-BIAS	L
0A	169 uH
5A	160 uH
10A	148 uH
15A	132 uH
20A	114 uH
25A	96 uH
30A	92 uH
35A	88 uH

- 8 APPLICATION: ENERGY STORAGE FILTER, SWINGING CHOKE
- 7 BUILT TO ROHS COMPLIANCE AND LEAD FREE.
- 6 MARK PART NUMBER AND REVISION WHERE SHOWN
- 5 VANISH PART AND CURE
APPLY SILICON WHERE SHOWN
- 4 WRAP TAPE AROUND CORES
WITH CORES AND NOMEX SPACERS
ASSEMBLE PRE FORMED FLAT HELICAL COIL
CONSTRUCTION
WEIGHT: 440 GRAM (TYP)
MAX INDUCTOR TEMP RATING: 200°C
RECOMMENDED OPERATING TEMP: -40°C TO 85°C
HI-POT TEST FOR WINDING TO CORE ISOLATION. 1000VDC @ 2mA, 1 MIN
INTERWINDING CAPACITANCE @ 10KHZ = 21pF (TYP)
|z|@SRF=6.5 KILLO-OHM (TYP)
SRF=2.7 MHZ (TYP)
RATED CURRENT: 40 AMPS
DCR= 6.9 MILLI-OHM MAX.
L@DC BIAS: SEE TABLE ON RIGHT.
L= 170 uH ± 15%, MEASURED AT 10 KHZ, 0.25V, ZERO DC BIAS
SPECIFICATIONS:

- 3 VANISH DOLPH or EQUAL
SILICON DOW CORNING OR EQUAL
NOMEX SPACERS FOR SIDE AND CENTER LEG OF CORES
OUTER WRAP: 3M GLASS OR EQUAL
WIRE: UL RECOGNIZED 200°C RATED MAGNET WIRE
CORE: COMPACTED POWDERED CORE
- 2 INSULATION CLASS 200°C REQUIRED
MATERIAL: UL RECOGNIZED 94V-0 FOR FLAMMABILITY

NOTES: UNLESS OTHERWISE SPECIFIED, READ FROM BOTTOM UP.
CAGE NO: 5DME2

QTY	CODE IDENT	MFG. P/N	DESCRIPTION	ITEM NO.
			PARTS LIST	
UNLESS OTHERWISE SPECIFIED				
DIMENSIONING AND TOLERANCE PER ANSI Y14.5M AND DIMENSIONS ARE IN INCHES AND [MILLIMETERS].				
TOLERANCE INCHES: ϕ = ±0.30° XXX=±0.10 .XX=±0.20 TOLERANCE METRICS: ϕ = ±0.30° XXX=±.254 .XX=±.51				
ANGLE PROJECTION				
DO NOT SCALE DRAWING				
AUTOCAD SOLIDWORKS SIGN		DATE		X
DRAWN	RL	2/11/11		
CHKD	JLJU	2/11/11		
ENGR	JLJU	2/11/11		
APPR	JLJU	2/11/11		
TITLE:		High Current Helical Inductor		
SIZE Dwg. NO.		ESS55246-171M-40AH		
SCALE		NOT_TO_SCALE		
SHEET		1 OF 1		

www.coilws.com
sales@coilws.com

Coil Winding Specialist, Inc.
353 W. GROVE AVE
ORANGE, CA 92665