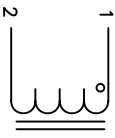
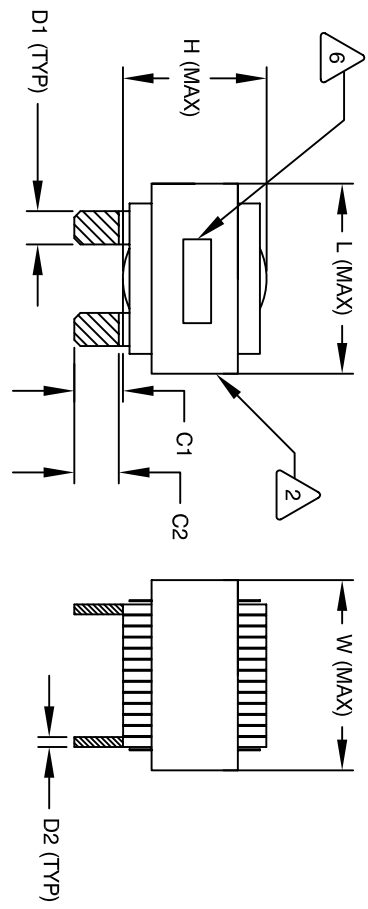


REVISION HISTORY

REV	ECN	DESCRIPTION	SIGN & DATE		
A		PRODUCTION RELEASE	BY	DATE	CHK
			RL	2/13/11	JCL
					2/13/11



SCHEMATIC

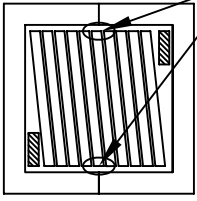


DIMENSIONAL TOLERANCE

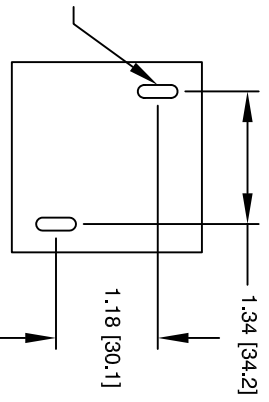
	mm	inch
C1	15.25 ± 1.50	0.60 ± 0.06
C2	12.25 ± 1.00	0.48 ± 0.04
D1	7.60 (TYP)	0.29 (TYP)
D2	2.50 (TYP)	0.10 (TYP)
L	57.0 MAX	2.25 MAX
W	57.0 MAX	2.25 MAX
H	35.0 MAX	1.38 MAX

- BUILT TO ROHS COMPLIANCE AND LEAD FREE.
- MARK PART NUMBER AND REVISION WHERE SHOWN
- VANISH PART AND CURE
APPLY SILICON WHERE SHOWN
- WRAP TAPE AROUND CORES
WITH CORES AND NOMEX SPACERS
ASSEMBLE PRE FORMED FLAT HELICAL COIL
CONSTRUCTION
WEIGHT: 452 GRAM (TYP)
RECOMMENDED OPERATING TEMP: -40°C TO 85°C AT 55°C AMBIENT
HI-POT TEST FOR WINDING TO CORE ISOLATION. 1000VDC @ 2mA, 1 MIN
INTERWINDING CAPACITANCE @ 10KHZ = 19pF (TYP)
|z|@SRF=3.8 KLO-OHM
SRF=6.9 MHz
RATED CURRENT: 180 AMPS
DCR = 1.0 MILLI-OHM MAX., USING GW INSTEK GOM-801H OR EQUAL
L@DC BIAS: SEE TABLE ON RIGHT.
L = 30uH ± 15%, MEASURED AT 10 KHZ, 0.25V, ZERO DC BIAS
SPECIFICATIONS:

BOTTOM VIEW



MOUNTING HOLES PATTERN



DC-BIAS

	L
0A	28.1 uH
5A	26.9 uH
10A	26.3 uH
15A	25.4 uH
20A	24.4 uH
25A	23.3 uH
30A	23.3 uH
40A	21.9 uH
50A	20.6 uH
60A	18.7 uH
70A	18.3 uH
80A	16.1 uH
90A	15.0 uH
100A	13.4 uH

- VANISH DOLPH or EQUAL
SILICON DOW CORNING OR EQUAL
NOMEX SPACERS FOR SIDE AND CENTER LEG OF CORES
OUTER WRAP: 3M GLASS OR EQUAL
WIRE: UL RECOGNIZED 200°C RATED MAGNET WIRE
CORE: COMPACTED POWDERED CORE

- INSULATION CLASS 200°C REQUIRED
MATERIAL: UL RECOGNIZED 94V-0 FOR FLAMMABILITY

NOTES: UNLESS OTHERWISE SPECIFIED, READ FROM BOTTOM UP.

QTY	CODE IDENT	MFG. P/N	DESCRIPTION	ITEM NO.
			PARTS LIST	
			www.coilw.com sales@coilw.com	
			Coil Winding Specialist, Inc. 353 W. GROVE AVE ORANGE, CA 92665	
			TITLE: High Current Helical Inductor 30 uH, 180 Amps, Horizontal	
			SCALE: NOT TO SCALE	
			SIZE Dwg. NO.: ES55246-300M-180AH	
			DATE: 2/11/11	
			APPR.: JLJU	
			SCALE: NOT TO SCALE	
			SHEET 1 OF 1	

UNLESS OTHERWISE SPECIFIED
DIMENSIONING AND TOLERANCE PER ANSI Y14.5M
ALL DIMENSIONS ARE IN INCHES AND [DIMETERS].
TOLERANCE INCHES: $\pm .030$
 $\pm .010$ $\pm .020$
TOLERANCE METERS: $\pm .001$
 $\pm .002$ $\pm .005$
ANGLE PROJECTION ϕ
DO NOT SCALE DRAWING