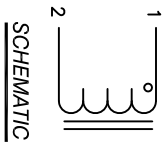


The information contained in this drawing is the sole property of Coil Winding Specialist, Inc. Any reproduction in part or whole without written permission of Coil Winding Specialist, Inc. is prohibited.

DIMENSIONAL TOLERANCE					
C (TYP)	D (MIN)	L1 (TYP)	L (MAX)	W (MAX)	H (MAX)
0.50 <sup>±</sup> [12.70]	12.00 <sup>±</sup> [304.8]	11.00 <sup>±</sup> [279.4]	15.50 <sup>±</sup> [393.7]	4.65 <sup>±</sup> [118.1]	3.80 <sup>±</sup> [96.5]

REVISION HISTORY			SIGN & DATE			
REV	ECN	DESCRIPTION	BY	DATE	CHK	DATE
A	151130	PRODUCTION RELEASE	JK	11/30/15	JLU	11/30/15

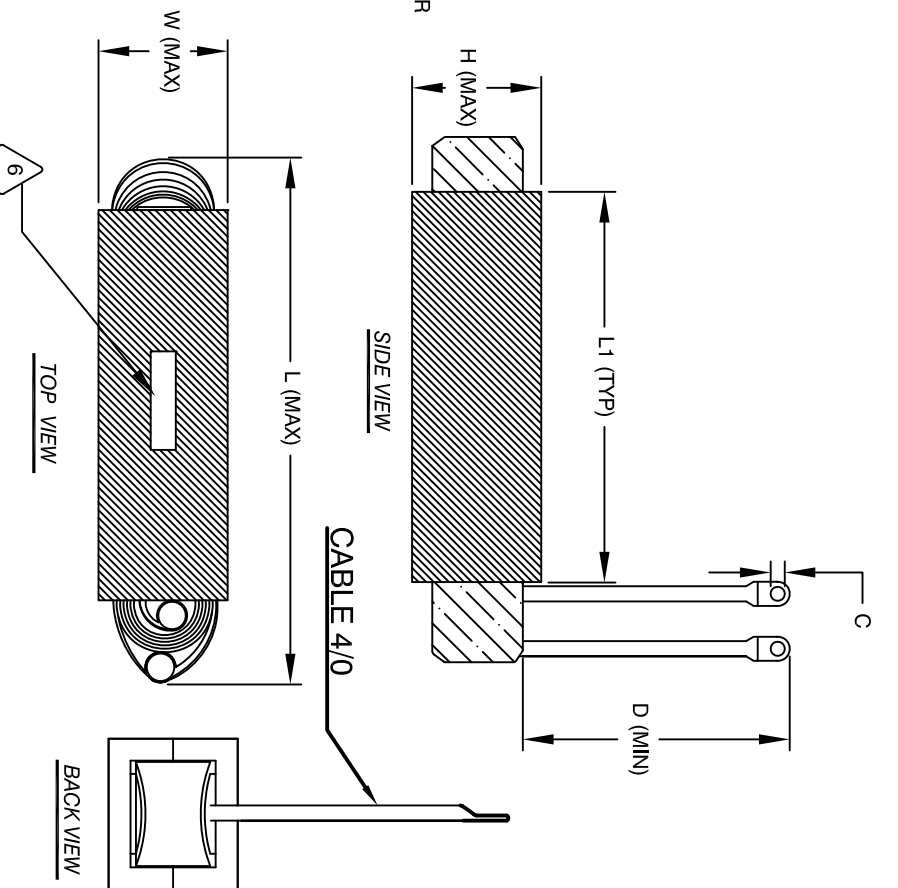


- 8 APPLICATION: OUTPUT CHOKE, HIGH CURRENT INDUCTOR, INPUT FILTER
- 7 BUILT TO ROHS COMPLIANCE
- 6 LABEL PART NUMBER AND REVISION WHERE SHOWN
- 5 VARNISHED AND CURE
- 4 APPLY SILICON IF REQUIRED
- 3 WRAP TAPE AROUND CORES WITH CORES AND NOMEX PRE FORMED FLAT COPPER SHEETS
- 2 CONSTRUCTION:

- 1 WEIGHT: 46 LB (TYP)
- 2 RECOMMENDED AMBIENT OPERATING TEMP: -40°C TO 105°C
- 3 HI-POT TEST FROM WINDING TO CORE 1000VDC @ 2mA, 1 MIN
- 4 INTERWINDING CAPACITANCE @ SRF = 222pF (TYP)
- 5 |z| @ SRF = 29 KIL-OHM
- 6 SRF = 425 KHZ
- 7 RATED CURRENT: 450 AMPS, APPROPRIATE AIR FLOW NEEDED.
- 8 DCR = 4.5 MILLIOHM MAX.
- 9 L @ DC BIAS: SEE TABLE ON RIGHT.
- 10 L = 630uH ± 12%, MEASURED AT 1 KHZ, 0.25V, ZERO DC BIAS
- 11 SPECIFICATIONS:
- 12 BAKE VARNISH
- 13 SILICON DOW CORNING OR EQUAL
- 14 OUTER WRAP: 3M GLASS OR EQUAL
- 15 CORE: COMPACTED POWDERED CORE
- 16 MATERIAL: UL RECOGNIZED

NOTES: UNLESS OTHERWISE SPECIFIED READ FROM BOTTOM UP.

CAGE CODE: 5DME2



DC-BIAS	L
0A	630uH
25A	615uH
50A	573uH
75A	527uH
100A	474uH
125A	423uH
150A	375uH
175A	333uH
200A	296uH
225A	264uH
250A	236uH
275A	212uH
300A	190uH
325A	172uH
350A	156uH
375A	142uH
400A	130uH
425A	120uH
450A	110uH

PARTS LIST

AUTOCAD SOLIDWORKS	DATE	DESCRIPTION
X	11/30/15	High Current Inductor

UNLESS OTHERWISE SPECIFIED	UNLESS OTHERWISE SPECIFIED
DIMENSIONING AND TOLERANCE PER ANSI Y14.5M AND [DIMETERS].	DRAWN: AK
TOLERANCE INCHES: .XXX=±.010 .XX=±.020 .X=±.030 .XXX=±.254 .XX=±.51	ENGR: JLU
ANGLE PROJECTION:	APPR: BO

DO NOT SCALE DRAWING	SCALE	NOT TO SCALE	SHEET 1 OF 1
	B		