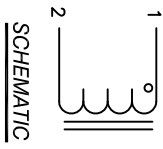


The information contained in this drawing is the sole property of Coil Winding Specialist, Inc. Any reproduction in part or whole without written permission of Coil Winding Specialist, Inc. is prohibited.

DIMENSIONAL TOLERANCES INCHES (MM)											
C1	C2	D1	D2	L	W	H	I	J	K	P1	P2
REF	REF	REF	REF	MAX	MAX	MAX	(X2) TYP	(X2) TYP	(X2) MIN	REF	REF
0.67 [17.00]	0.55 [14.00]	0.51 [13.00]	0.16 [4.00]	3.25 [82.50]	3.15 [80.00]	3.15 [80.00]	0.26 [6.50]	0.26 [6.50]	0.27 [6.76]	1.98 [50.30]	1.59 [40.39]

REVISION HISTORY			SIGN & DATE			
REV	ECN	DESCRIPTION	BY	DATE	CHK	DATE
A		PRODUCTION RELEASE	TN	01/07/19	JL	01/10/19
B		REVISED ELEC. AND MECH. SPEC.	TN	01/21/19	JL	01/21/19
C		REVISED ELECTRICAL SPEC.	TN	01/29/2020	JL	01/29/2020



7 BUILT TO ROHS COMPLIANCE AND LEAD FREE.

6 MARK PART NUMBER AND REVISION WHERE SHOWN

5 VARNISH PART AND CURE APPLY SILICONE WHERE SHOWN

4 CONSTRUCTION

3 SPECIFICATIONS @ 25°C:

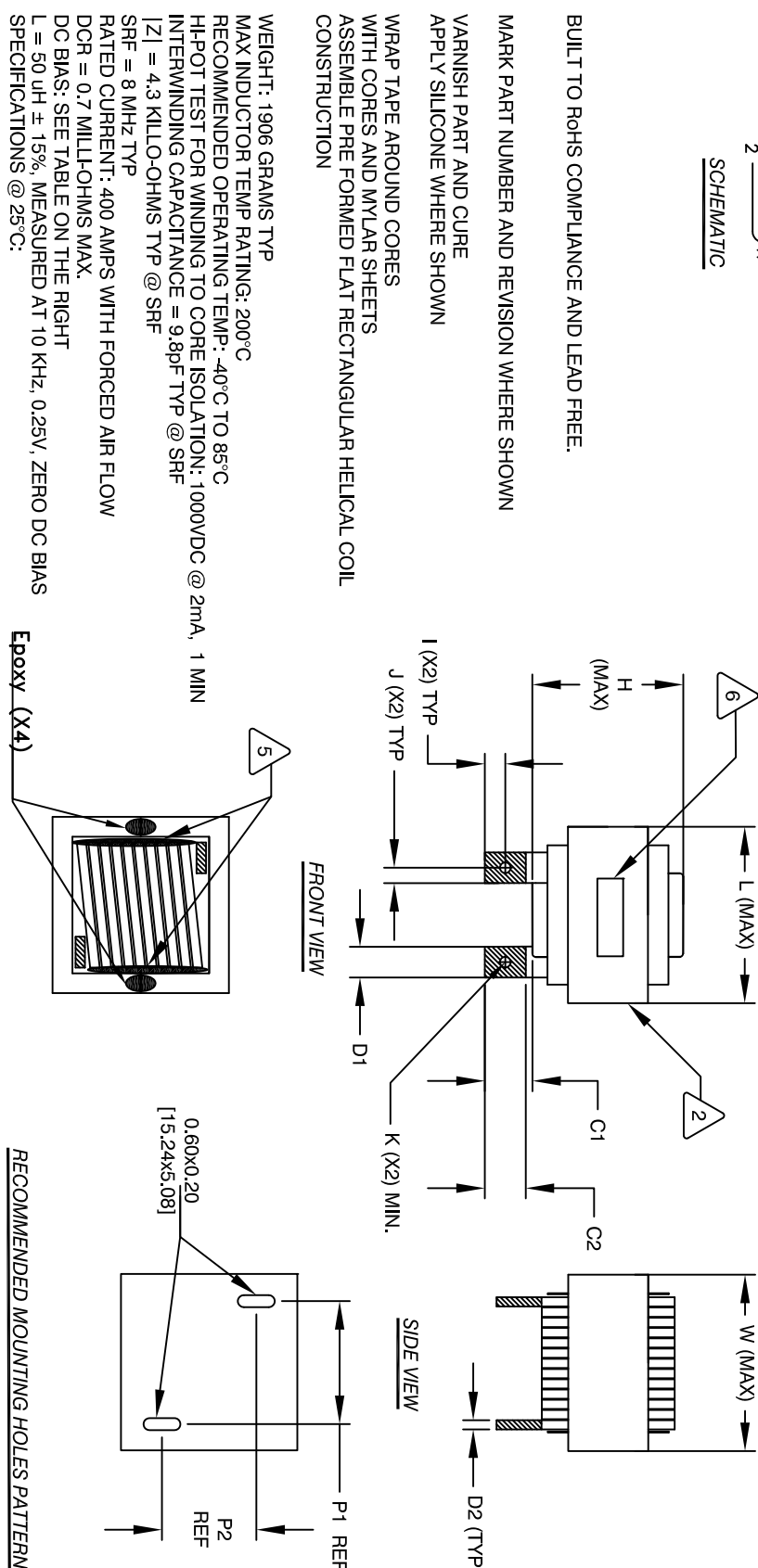
2 VARNISH DOLPH OR EQUAL

1 MATERIAL: UL RECOGNIZED 94V-0 FOR FLAMMABILITY

CAGE CODE: 5DME2

NOTES: UNLESS OTHERWISE SPECIFIED, READ FROM BOTTOM UP.

EP FORM0005 REV 3 10/01



RECOMMENDED MOUNTING HOLES PATTERN

DC BIAS (AMP)	L @ 10KHz (REF)
0	50uH
10	50uH
20	49uH
40	46uH
60	44uH
80	41uH
100	38uH
140	28uH
160	25uH
180	23uH
200	22uH
240	20uH
260	18uH
280	18uH
300	16uH
320	14uH
340	14uH
360	13uH
380	13uH
400	12uH

QTY	CODE IDENT	MFG. P/N	DESCRIPTION	ITEM NO.
			PARTS LIST	
			www.coilws.com	
			353 W. GROVE AVE	
			ORANGE, CA 92665	
			Coil Winding Specialist, Inc.	
			High Current Inductor,	
			Rectangular Helical Coil	
			50 uH, 400 Amps, Horizontal	
			SIZE Dwg. No.	
			LCEK38A62-500M-400AH	
			SCALE NOT TO SCALE	
			SHEET 1 OF 1	

CAD-FILE: