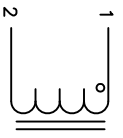
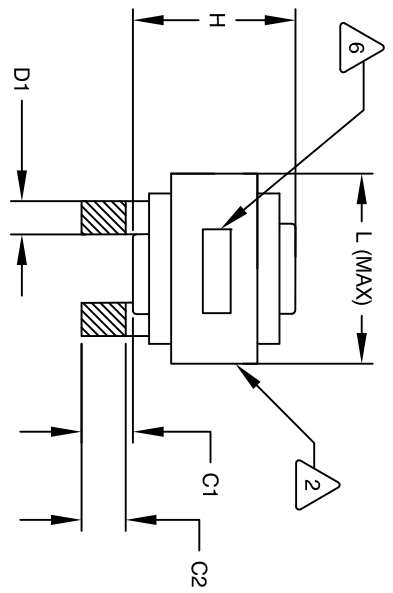


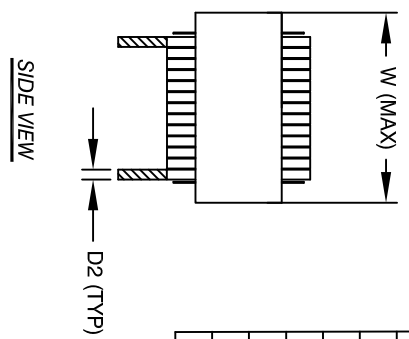
The information contained in this drawing is the sole property of Coil Winding Specialist, Inc. Any reproduction in part or whole without written permission of Coil Winding Specialist, Inc. is prohibited.



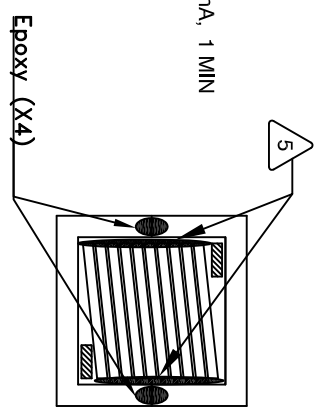
SCHEMATIC



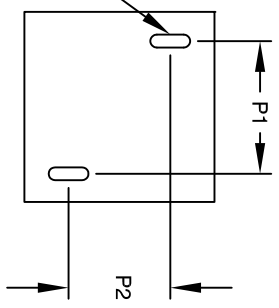
FRONT VIEW



SIDE VIEW



BOTTOM VIEW



MOUNTING HOLES PATTERN

DIMENSIONAL TOLERANCE			
	mm	inch	
C1	13.00 ± 1.00	0.51 ± 0.04	
C2	12.00 ± 1.00	0.47 ± 0.04	
D1	7.60 (TYP)	0.30 (TYP)	
D2	2.60 (TYP)	0.10 (TYP)	
L	57.00 MAX	2.24 MAX	
W	57.00 MAX	2.24 MAX	
H	44.25 MAX	1.74 MAX	
P1	34.40 ± 1.00	1.35 ± 0.04	
P2	27.60 ± 1.00	1.09 ± 0.04	

DC-BIAS	L
0A	34 uH
10A	31 uH
20A	30 uH
30A	28 uH
40A	26 uH
50A	24 uH
60A	22 uH
70A	20 uH
80A	18 uH
90A	17 uH
100A	15 uH
120A	11 uH
140A	8 uH
160A	4 uH
170A	2 uH

7 BUILT TO ROHS COMPLIANCE AND LEAD FREE

6 MARK PART NUMBER AND REVISION WHERE SHOWN

5 VARNISH PART AND CURE APPLY SILICONE WHERE SHOWN

4 WRAP TAPE AROUND CORES WITH CORES AND MYLAR SHEETS ASSEMBLE PRE FORMED FLAT RECTANGULAR HELICAL COIL CONSTRUCTION

3 WEIGHT: 527 GRAM TYP  
 MAX INDUCTOR TEMP RATING: 200°C  
 RECOMMENDED OPERATING TEMP: -40°C TO 85°C  
 HI-POT TEST FOR WINDING TO CORE ISOLATION: 1000VDC @ 2mA, 1 MIN  
 INTERWINDING CAPACITANCE = 13pF TYP @ SRF  
 |Z| = 7 KILO-OHMS TYP @ SRF  
 SRF = 7.9 MHz TYP  
 RATED CURRENT: 170 AMPS WITH FORCED AIR FLOW  
 DCR = 1.25 MILLI-OHMS MAX.  
 DC BIAS: SEE TABLE ON THE RIGHT  
 L = 30 uH ± 20%, MEASURED AT 10 KHZ, 0.25V, ZERO DC BIAS SPECIFICATIONS @ 25°C;

2 VARNISH DOLPH or EQUAL  
 SILICONE DOW CORNING OR EQUAL  
 MYLAR SHEETS FOR SIDES AND CENTER LEG OF CORES  
 OUTER WRAP: 3M GLASS TAPE OR EQUAL  
 WIRE: UL RECOGNIZED 200°C RATED MAGNET WIRE  
 CORE: COMPACTED POWDERED CORE

1 INSULATION CLASS 200°C REQUIRED  
 MATERIAL: UL RECOGNIZED 94V-0 FOR FLAMMABILITY

NOTES: UNLESS OTHERWISE SPECIFIED, READ FROM BOTTOM UP.  
 CAGE CODE: 5DME2

REVISION HISTORY			
REV	ECN	DESCRIPTION	DATE
A		PRODUCTION RELEASE	05/24/19

QTY	CODE IDENT	MFG. P/N	DESCRIPTION	ITEM NO.
			<b>PARTS LIST</b>	
			www.coilws.com	
			353 W. GROVE AVE	
			ORANGE, CA 92665	
			Coil Winding Specialist, Inc.	
			High Current Inductor,	
			Rectangular Helical Coil	
			30 uH, 170 Amps, Horizontal	
			LCES28B6-300M-170AH	
			NOT TO SCALE	
			SHEET 1 OF 1	