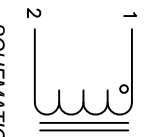


The information contained in this drawing is the sole property of Coil Winding Specialist, Inc. Any reproduction in part or whole without written permission of Coil Winding Specialist, Inc. is prohibited.



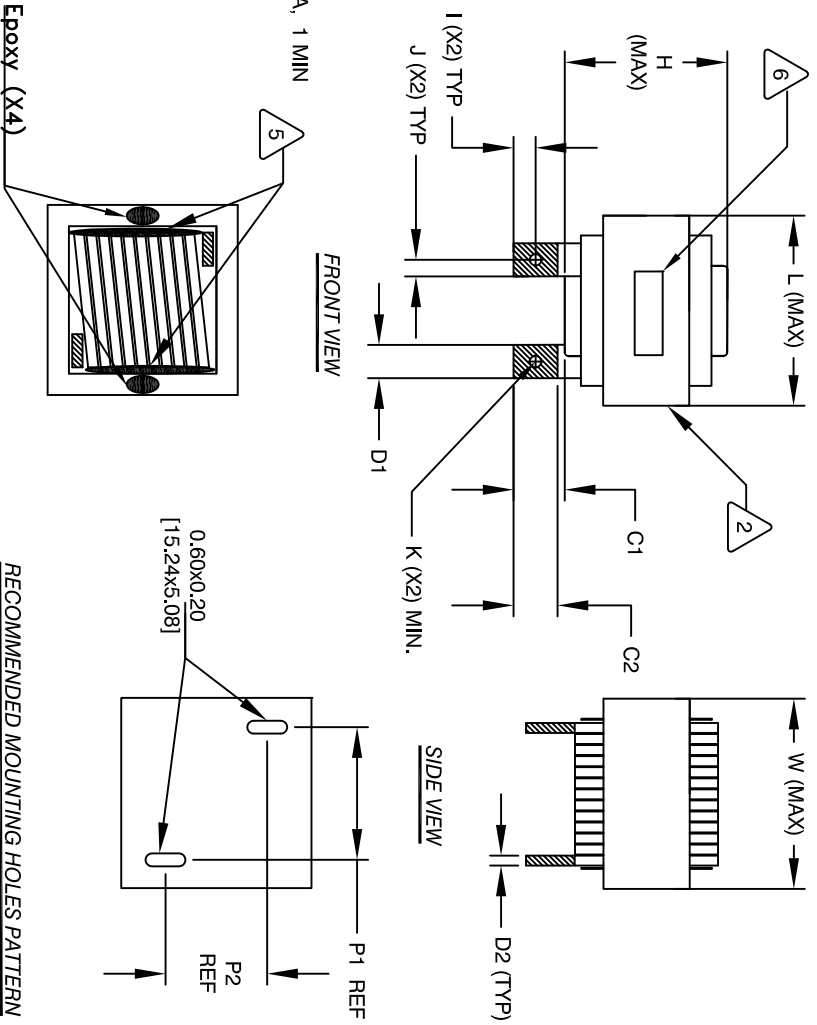
DIMENSIONAL TOLERANCES INCHES (MM)											
C1	C2	D1	D2	L	W	H	I	J	K	P1	P2
REF	REF	REF	REF	MAX	MAX	MAX	(X2) TYP	(X2) TYP	(X2) MIN	REF	REF
0.67 [17.00]	0.55 [14.00]	0.51 [13.00]	0.16 [4.00]	3.25 [82.50]	3.15 [80.00]	3.15 [80.00]	0.26 [6.50]	0.26 [6.50]	0.27 [6.76]	1.98 [50.30]	1.59 [40.39]

REVISION HISTORY			
REV	ECN	DESCRIPTION	DATE
A		PRODUCTION RELEASE	03/09/2020
A1		DEFINED "TYP" IN DIMENSIONAL TOLERANCES	04/16/2020

DC BIAS TABLE

DC BIAS (AMP)	L @ 10KHz (REF)
0	20.6uH
10	20.4uH
20	20.3uH
40	19.8uH
60	19.3uH
80	18.7uH
100	18.0uH
140	15.0uH
160	13.8uH
180	13.2uH
200	12.4uH
240	11.0uH
260	10.5uH
280	10.0uH
300	9.2uH
320	8.5uH
340	8.0uH
360	7.7uH
380	7.0uH
400	6.3uH

- BUILT TO ROHS COMPLIANCE AND LEAD FREE.
- MARK PART NUMBER AND REVISION WHERE SHOWN
- VARNISH PART AND CURE  
APPLY SILICONE WHERE SHOWN
- WRAP TAPE AROUND CORES  
WITH CORES AND MYLAR SHEETS  
ASSEMBLE PRE FORMED FLAT RECTANGULAR HELICAL COIL  
CONSTRUCTION
- WEIGHT: 1906 GRAMS TYP  
MAX INDUCTOR TEMP RATING: 200°C  
RECOMMENDED OPERATING TEMP: -40°C TO 85°C  
HI-POT TEST FOR WINDING TO CORE ISOLATION: 1000VDC @ 2mA, 1 MIN  
INTERWINDING CAPACITANCE = 8.2pF TYP @ SRF  
|Z| = 7.78 KILLO-OHMS TYP @ SRF  
SRF = 9.68 MHz TYP  
RATED CURRENT: 400 AMPS WITH FORCED AIR FLOW  
DCR = 0.8 MILLI-OHMS MAX.  
DC BIAS: SEE TABLE ON THE RIGHT  
L = 20uH ± 15%, MEASURED AT 10 KHz, 0.25V, ZERO DC BIAS  
SPECIFICATIONS @ 25°C:
- VARNISH DOLPH or EQUAL  
SILICONE DOW CORNING OR EQUAL  
MYLAR SHEETS FOR SIDES AND CENTER LEG OF CORES  
OUTER WRAP: 3M GLASS TAPE OR EQUAL  
WIRE: UL RECOGNIZED 200°C RATED MAGNET WIRE  
CORE: COMPACTED POWDERED CORE
- INSULATION CLASS 200°C REQUIRED  
MATERIAL: UL RECOGNIZED 94V-0 FOR FLAMMABILITY



RECOMMENDED MOUNTING HOLES PATTERN

QTY	CODE IDENT	MFG. P/N	DESCRIPTION	ITEM NO.
			PARTS LIST	

AUTOCAD SOLIDWORKS		DATE		TITLE	
DRWN	TN	03/09/2020	03/09/2020	High Current Inductor, Rectangular Helical Coil	
ENGR	JL	03/09/2020	03/09/2020	20uH, 400 Amps, Horizontal	

UNLESS OTHERWISE SPECIFIED		DIMENSIONING AND TOLERANCE PER ANSI Y14.5M AND DIMENSIONS ARE IN INCHES	
ANGLE PROJECTION	DO NOT SCALE DRAWING	TOLERANCE INCHES: .XXX±.010 .XX±.020 TOLERANCE METERS: .XXX±.254 .XX±.51	ANGLE PROJECTION

REV	DATE	CHK	DATE
A1	04/16/2020	JL	04/16/2020