

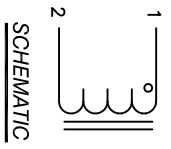
The information contained in this drawing is the sole property of Coil Winding Specialist, Inc. Any reproduction in part or whole without written permission of Coil Winding Specialist, Inc. is prohibited.

DIMENSIONAL TOLERANCES INCHES (MM)											
C1	C2	D1	D2	L	W	H	I	J	K	P1	P2
0.67 [17.00] REF	0.55 [14.00] REF	0.51 [13.00] TYP	0.16 [4.00] TYP	3.25 [82.50] MAX	3.15 [80.00] MAX	3.15 [80.00] MAX	0.256 [6.50] TYP	0.26 [6.50] TYP	0.266 [6.756] MIN	1.98 [50.30] REF	1.59 [40.39] REF

REVISION HISTORY			
REV	ECN	DESCRIPTION	DATE
A		PRODUCTION RELEASE	01/10/19
B		REVISED ELEC. AND MECH. SPEC.	01/29/19

DC BIAS TABLE

DC BIAS	L (REF)
0A	20uH
10A	20uH
20A	20uH
40A	20uH
60A	20uH
80A	20uH
100A	20uH
140A	19uH
160A	18uH
180A	18uH
200A	17uH
240A	16uH
260A	16uH
280A	15uH
300A	14uH
320A	13uH
340A	12uH
360A	11uH
400A	10uH



SCHEMATIC

7 BUILT TO ROHS COMPLIANCE AND LEAD FREE.

6 MARK PART NUMBER AND REVISION WHERE SHOWN

5 VARNISH PART AND CURE APPLY SILICONE WHERE SHOWN

4 CONSTRUCTION  
WRAP TAPE AROUND CORES WITH CORES AND MYLAR SHEETS ASSEMBLE PRE FORMED FLAT RECTANGULAR HELICAL COIL

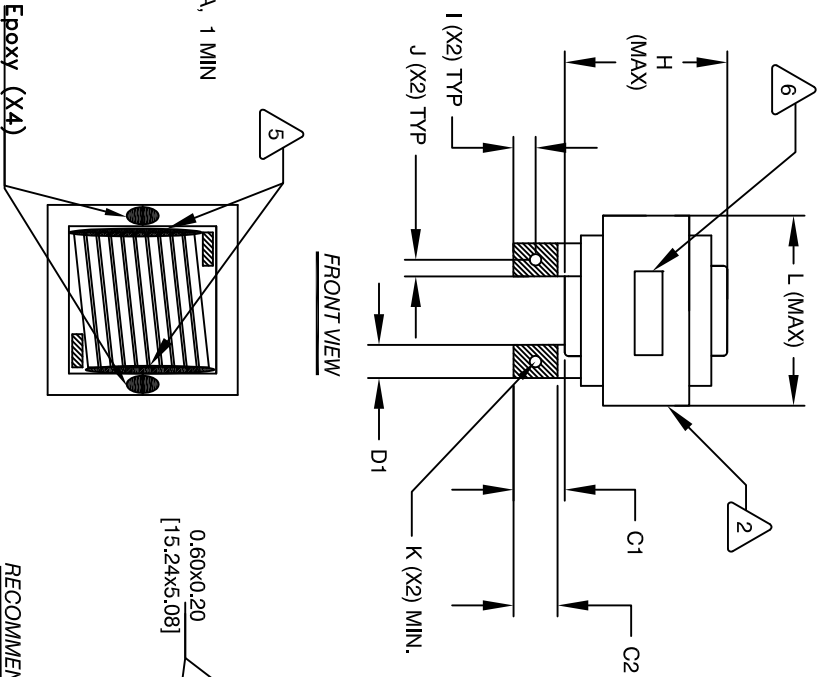
3 SPECIFICATIONS @ 25°C:  
WEIGHT: 1906 GRAMS TYP  
MAX INDUCTOR TEMP RATING: 200°C  
RECOMMENDED OPERATING TEMP: -40°C TO 85°C  
HI-POT TEST FOR WINDING TO CORE ISOLATION: 1000VDC @ 2mA, 1 MIN  
INTERWINDING CAPACITANCE = 12.65pF TYP @ SRF  
|Z| = 6.7 KILO-OHMS TYP @ SRF  
SRF = 10 MHz TYP  
RATED CURRENT: 400 AMPS WITH FORCED AIR FLOW  
DCR = 0.8 MILLIOHMS MAX.  
DC BIAS: SEE TABLE ON RIGHT  
L = 20 uH ± 15%, MEASURED AT 10 KHZ, 0.25V, ZERO DC BIAS

2 VARNISH DOLPH or EQUAL  
SILICONE DOW CORNING or EQUAL  
MYLAR SHEETS FOR SIDES AND CENTER LEG OF CORES  
OUTER WRAP: 3M GLASS OR EQUAL  
WIRE: UL RECOGNIZED 200°C RATED MAGNET WIRE  
CORE: COMPACTED POWDERED CORE

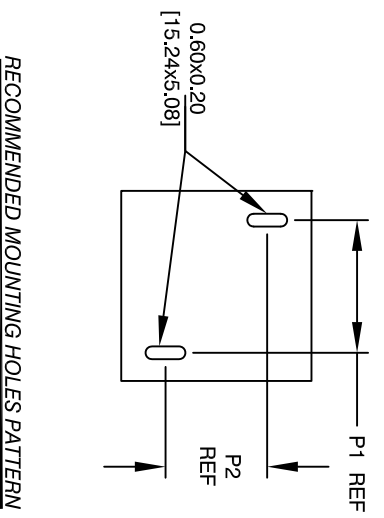
1 INSULATION CLASS 200°C REQUIRED MATERIAL: UL RECOGNIZED 94V-0 FOR FLAMMABILITY

NOTES: UNLESS OTHERWISE SPECIFIED, READ FROM BOTTOM UP.

CAGE CODE: 5DME2



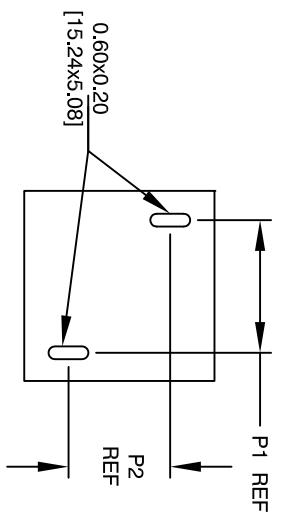
FRONT VIEW



SIDE VIEW

BOTTOM VIEW

RECOMMENDED MOUNTING HOLES PATTERN



QTY	CODE IDENT	MFG. P/N	DESCRIPTION	ITEM NO.
			<b>PARTS LIST</b>	
			www.coilws.com	
			sales@coilws.com	
			Coil Winding Specialist, Inc.	
			353 W. GROVE AVE	
			ORANGE, CA 92665	
			<b>TITLE:</b> High Current Rectangular Helical Inductor	
			20 uH, 400 Amps, Horizontal	
			<b>SIZE Dwg. NO.</b> LCEK38A22-200M-400AH	
			<b>SCALE</b> NOT TO SCALE	
			<b>SHEET</b> 1 OF 1	

UNLESS OTHERWISE SPECIFIED  
DIMENSIONING AND TOLERANCE PER ANSI Y14.5M  
ALL DIMENSIONS ARE IN INCHES AND [DIMETERS].  
TOLERANCE INCHES: <math>\phi = \pm 0.30</math>  
<math>.XXX = \pm 0.10</math> <math>.XX = \pm 0.20</math>  
TOLERANCE METRCS: <math>.XXX = \pm .254</math> <math>.XX = \pm .51</math>  
ANGLE PROJECTION <math>\phi = \pm 0.30^\circ</math>  
DO NOT SCALE DRAWING