

The information contained in this drawing is the sole property of CMS Coil Winding Specialist. Any reproduction in part or whole without written permission of CMS Coil Winding Specialist is prohibited.

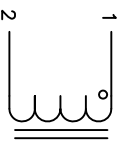
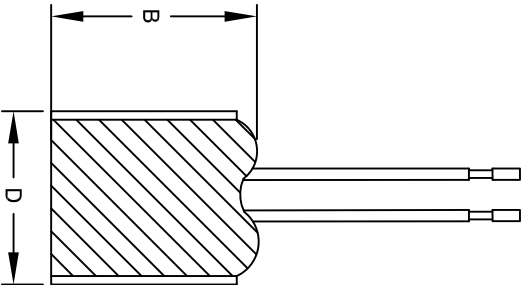
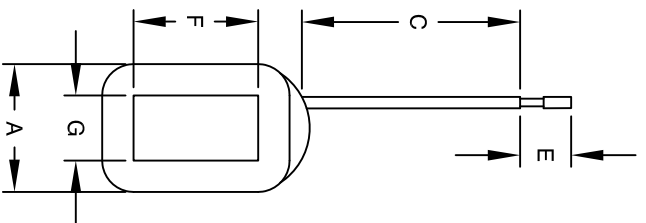


DIMENSIONAL TOLERANCES INCHES [MM]						
A	B	C	D	E	F	G
MAX	MAX	MIN	MAX	REF	MAX	MAX
1.18 [30.00]	1.57 [40.00]	5.91 [150.00]	1.26 [32.00]	0.25 [6.35]	0.79 [20.00]	0.55 [14.00]

REVISION HISTORY						
REV	ECN	DESCRIPTION	BY	DATE	CHK	DATE
A		PRODUCTION RELEASE	TN	08/25/17	JLU	08/25/17

- 10 BUILT TO ROHS COMPLIANCE.
- 9 VARNISH (REMOVE FROM TOP, BOTTOM, AND INSIDE OF BOBBIN)
- 8 LEAD LENGTH = DIMENSION C, STRIP END 0.25", #24 GA. WHITE TEFLON
- 7 USE SINGLE ENAMEL MAGNET COIL WIRE
- 6 BREAK AND DEBURR EDGES
- 5 IF APPLICABLE, LABEL PART NUMBER AND REVISION
- POSITION LEADS AS REQUIRED
- REMOVE WIRE INSULATION AND TIN
- WIND COILS EVENLY SPACED
- CONSTRUCTION:
- 4 FREQUENCY = 60HZ
- VOLTAGE = 48 VAC
- DCR = 4.5Ω ±10% MAX
- SRF = 188.8 KHZ
- MAX TEMP. RISE @ IDC 1.70 AMP. LESS THAN 25°C WITH NO AIRFLOW
- INDUCTANCE = 3.70mH TYP.
- TEST FREQUENCY: 1.0 KHZ ; TEST VOLTAGE: 250mV
- RATED MAX. CURRENT = 1.70 AMPS RMS
- OPERATING TEMPERATURE RANGE : -40° TO 180°C
- SPECIFICATIONS @ 25°C
- 3 WIRE: UL RATED CLASS 180°C
- CORE: AIR
- 2
- 1 RATING: UL-CLASS H (180°C) REQUIRED
- MATERIAL: UL RECOGNIZED FLAMMABILITY

NOTES: UNLESS OTHERWISE SPECIFIED. READ NOTES FROM BOTTOM TO UP.



CODE IDENT	MFG. P/N	DESCRIPTION	ITEM NO.
PARTS LIST			
AUTOCAD	X		
SOLIDWORKS			
SIGN	DATE	TITLE:	
DRWNN	08/25/17	COILS COM, INC 353 West Grove Ave. Orange, CA 92865 CWS Coil Winding Specialist.	
CHKD	08/25/17		
ENGR	08/25/17		
APPR	08/25/17	SOLENOID COIL	
JL		3.7 mH, 1.70 Amps	
SIZE		DWG. NO.	REV
SCALE		SOL001117	A
DO NOT SCALE DRAWING		N/A	