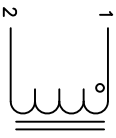


The information contained in this drawing is the sole property of Coil Winding Specialist, Inc. Any reproduction in part or whole without written permission of Coil Winding Specialist, Inc. is prohibited.



SCHEMATIC

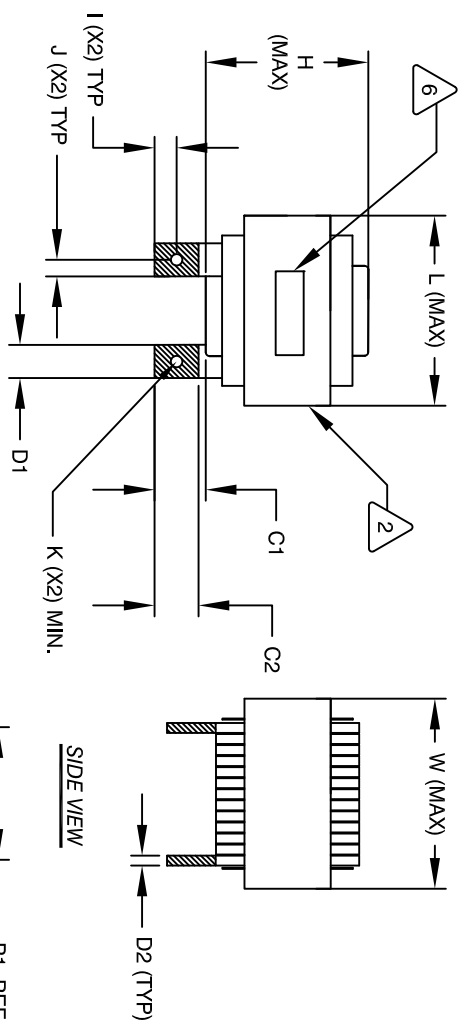
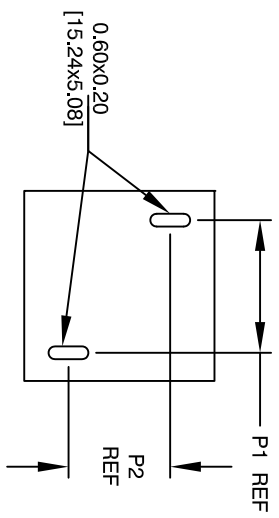
DIMENSIONAL TOLERANCES INCHES (MM)											
C1	C2	D1	D2	L	W	H	I	J	K	P1	P2
0.67 [17.00] REF	0.55 [14.00] REF	0.51 [13.00] TYP	0.16 [4.00] TYP	3.25 [82.50] MAX	3.15 [80.00] MAX	3.15 [80.00] MAX	0.26 [6.50] TYP	0.26 [6.50] TYP	0.27 [6.76] MIN	1.98 [50.30] REF	1.59 [40.39] REF

REV		ECN	DESCRIPTION	BY	DATE	CHK	DATE
A			PRODUCTION RELEASE	TN	01/10/19	JL	01/10/19
B			REVISED ELEC. AND MECH. SPEC.	TN	01/21/19	JL	01/21/19
C			REVISED ELEC. SPEC. & DESCRIPTION	TN	02/25/19	JL	02/25/19
C1			ADDED NOTE ON "TYP" DIMS.	TN	05/09/2020	JL	05/09/2020

DC BIAS TABLE

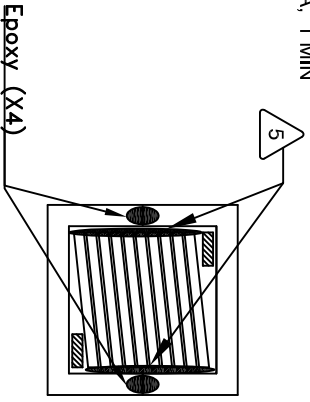
DC BIAS	L @ 10KHz (REF)
0A	40uH
10A	40uH
20A	39uH
40A	38uH
60A	36uH
80A	35uH
100A	33uH
140A	28uH
160A	26uH
180A	25uH
200A	23uH
240A	19uH
260A	18uH
280A	16uH
300A	15uH
320A	14uH
340A	13uH
360A	12uH
400A	10uH

RECOMMENDED MOUNTING HOLES PATTERN



FRONT VIEW

SIDE VIEW



BOTTOM VIEW

- INSULATION CLASS 200°C REQUIRED MATERIAL: UL RECOGNIZED 94V-0 FOR FLAMMABILITY
- VARNISH DOLPH or EQUAL SILICONE DOW CORNING OR EQUAL NYLAR SHEETS FOR SIDES AND CENTER LEG OF CORES OUTER WRAP: 3M GLASS OR EQUAL WIRE: UL RECOGNIZED 200°C RATED MAGNET WIRE CORE: COMPACTED POWDERED CORE
- RATED CURRENT: 400 AMPS WITH FORCED AIR FLOW DCR = 0.8 MILLI-OHMS MAX. DC BIAS: SEE TABLE ON THE RIGHT L = 40 uH ± 12%, MEASURED AT 10 KHz, 0.25V, ZERO DC BIAS SPECIFICATIONS @ 25°C:

CAGE CODE: 5DME2  
EP FORM0005 REV 3 10/01

QTY	CODE IDENT	MFG. P/N	DESCRIPTION	ITEM NO.
			<b>PARTS LIST</b>	
			www.coilw.com	
			sales@coilw.com	
			Coil Winding Specialist, Inc.	
			353 W. GROVE AVE	
			ORANGE, CA 92665	
			High Current Rectangular Helical Inductor	
			40 uH, 400 Amps, Horizontal	
			SIZE DIM. NO.	
			LCEK38A62 - 400M - 400AH	
			SCALE NOT_TO_SCALE	
			SHEET 1 OF 1	

CAD-FILE:  
SHEET 1 OF 1