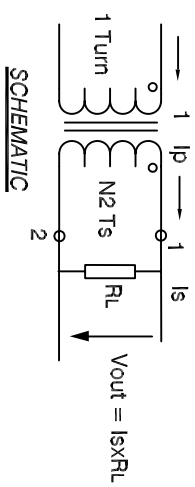


The information contained in this drawing is the sole property of Coil Winding Specialist. Any reproduction in part or whole without written permission of Coil Winding Specialist is prohibited.



Note: All measurements are carried out using rms value responding meter. Unless requested the terminating resistor and the 1-turn primary are not supplied.

- 7 BUILT TO ROHS COMPLIANCE WHERE SHOWN
- 6 MARK PART NUMBER AND REVISION
- 5 REMOVE INSULATION, SOLDERED TO LEADS
- 4 CONSTRUCTION: ENCAPSULATED USING BOBBIN.

DIELECTRIC BREAKDOWN: 2,500 V RMS
 OPERATING TEMP. = - 25 °C TO 125 °C
 OUTPUT VOLTAGE AT RL AND MAX (In) = 1.0 V RMS
 BURDEN RESISTOR (RL) = 100 OHMS
 DC RESISTANCE @ 25 °C = 100 OHMS MAX
 MAX AMPLITUDE ERROR WITHIN RANGE OF (In) = ± 0.1%
 MAX PHASE ERROR WITHIN RANGE OF (In) = ± 5'
 ACCURACY CLASS = 0.1, 0.2 %
 = 40 AMPS RMS MAX.
 MAX AC PRIMARY CURRENT WITHOUT SATURATION (I max), = 10 AMPS RMS NOMINAL.

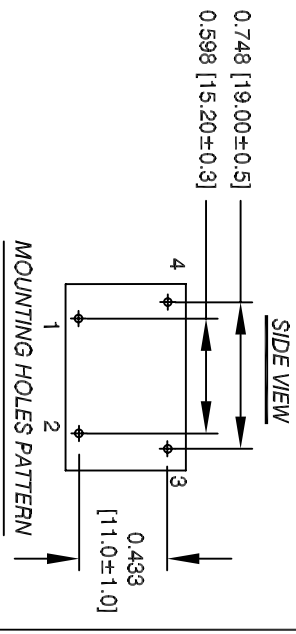
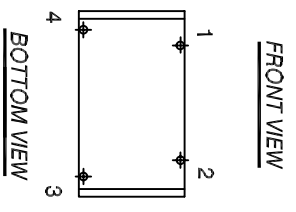
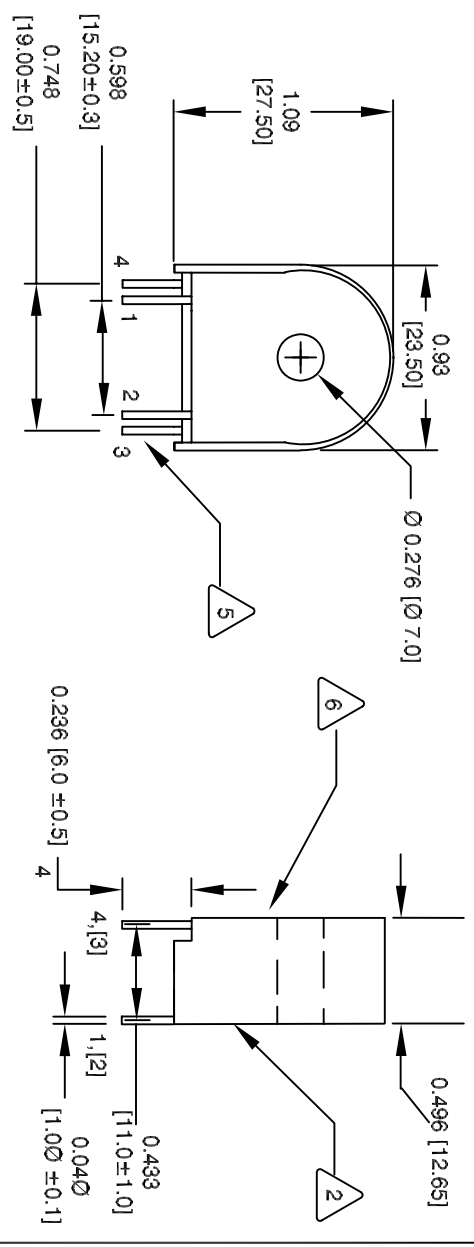
- 3 SPECIFICATIONS @ 25 °C :
 PRIMARY CURRENT RANGE WITH DEFINED ERROR TOLERANCES (In),

WIRE: UL RECOGNIZED 130 °C RATED MAGNET WIRE
 CWS BYTEMARK OR OTHER APPROVED PART
 CORE: TAPE WOUND

- 1 BOBBIN RATING CLASS B (130 °C) REQUIRED MATERIAL: UL RECOGNIZED 94V-0 FOR FLAMMABILITY

NOTES: UNLESS OTHERWISE SPECIFIED, 50/60 HZ CURRENT SENSOR.
 UNIT: INCHES [MM]

REVISION HISTORY		SIGN & DATE	
REV	ECN	DESCRIPTION	
B		PRODUCTION RELEASE	BY RFR DATE 8/24/04
C		ELEC., MECH., FOOTPRINT SPECS CHANGED	BY GN DATE 04/22/09



Note: Pin 3 and 4 are only used for mechanical mounting on to PCB

UNLESS OTHERWISE SPECIFIED		DIMENSIONING AND TOLERANCE PER ANSI Y14.5M AND [DIMETERS]	
ALL DIMENSIONS ARE IN INCHES	DRWN	DATE	
TOLERANCE INCHES: .XXX±.010 .XX±.020 .X±.030	ENGR	DATE	
TOLERANCE METRICS: .XXX±.254 .XX±.51	APPR	DATE	
ANGLE PROJECTION			
DO NOT SCALE DRAWING			

QTY	CODE	IDENT	MFG. P/N	DESCRIPTION	ITEM NO.

PARTS LIST	
AUTOCAD SOLIDWORKS SIGN	X
DRWN RFR	8/24/04
ENGR. KSUM	8/24/04
APPR. JLAU	8/24/04

SIZE	DWG. NO.	REV
B	CT-0810-HA	C