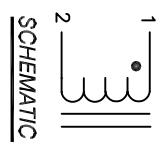


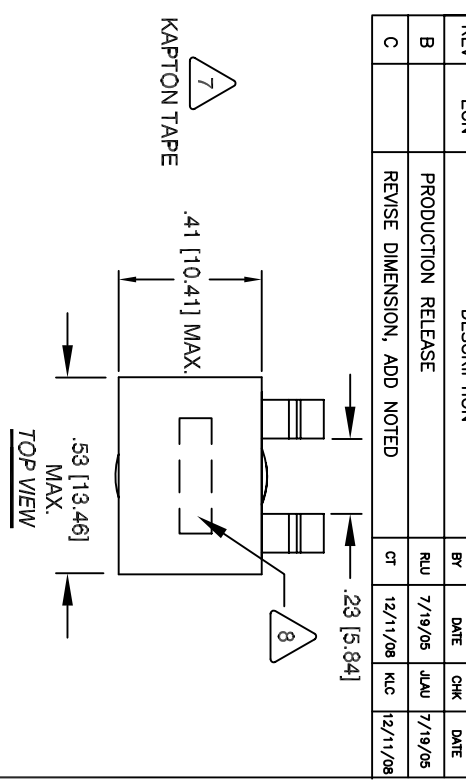
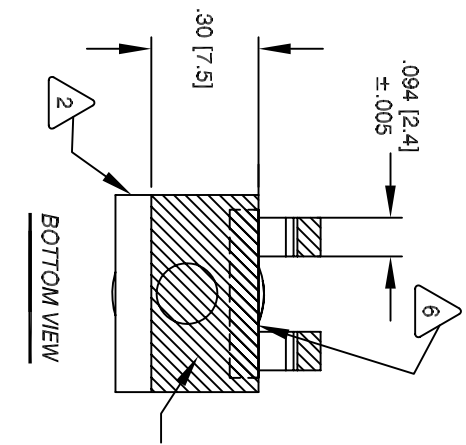
The information contained in this drawing is the sole property of CWS Coil Winding Specialist. Any reproduction in part or whole without written permission of CWS Coil Winding Specialist is prohibited.

REVISION HISTORY

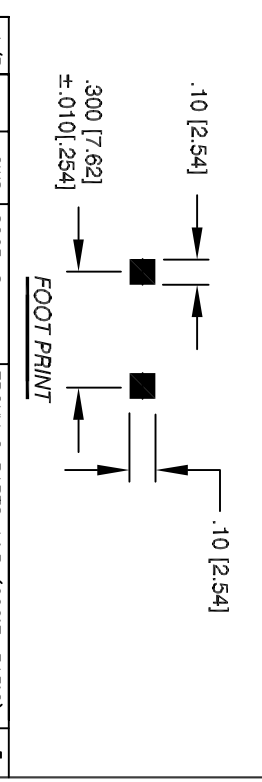
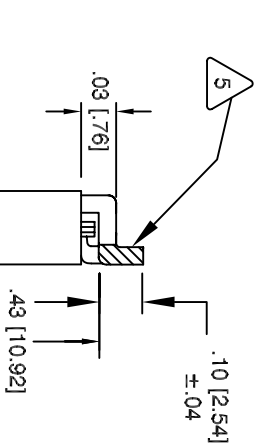
REV	ECN	DESCRIPTION	BY	DATE	CHK	DATE
B		PRODUCTION RELEASE	RUU	7/19/05	JLJU	7/19/05
C		REVISE DIMENSION, ADD NOTED	CT	12/11/08	KLC	12/11/08



- 10 PACKAGE: TAPE & REEL 500 pcs PER REEL
- 9 BUILT TO ROHS COMPLIANCE AND LEAD FREE
- 8 WHERE SHOWN, USING A PERMANENT MARKING METHOD MARK PART NUMBER AND REVISION IN (BLACK) APPROX



- 7 BOTTOM CORE AS SHOWN APPLY ONE KAPTON TAPE TO COVER THE EDGES OF
- 6 FILL WINDING AND CORE WITH EPOXY 2 PART A&B (600°F, 315°C)
- 5 THE LEAD MUST REST FLAT ON PCB. REMOVE INSULATION AND TIN LEADS APPROX. 0.10 INCH



- 4 HELIX WIND 3-3/4 TURNS TIGHT TO CORE AND EVENLY SPACED CONSTRUCTION:
HI-POT (2 SECOND, 5mA MAX.) 300 VRMS WINDING TO CORE
DCR = 1.8 MILLI-OHMS MAX. @ 25°C
L @ 0.5A DC = 1.24 UH
L = 1.4 UH ±15%, 0.25V, 0.5 A, 100KHz. @ 125°C
SPECIFICATIONS @ 25°C
- 3 EPOXY: 2 PARTS A & B (600°F, 315°C)
WIRE: UL RECOGNIZED 200°C RATED MAGNET WIRE, JIS C3102
CWS BYTEAMARK OR OTHER APPROVED PART
CORE: HIGH FLUX
- 2 HELICAL COIL RATING 200°C REQUIRED MATERIAL: UL RECOGNIZED 94V-0 FOR FLAMMABILITY
- 1 NOTES: UNLESS OTHERWISE SPECIFIED. READ FROM BOTTOM UP

A/R	QTY	UM	CODE	IDENT	MFG. P/N	DESCRIPTION	ITEM NO.
1	42"	CWS	8265-S			EPOXY 2 PARTS A&B (600°F, 315°C)	5
1	2".0	CWS	KAPTON TAPE			KAPTON TAPE, 0.25 Wk .42	4
1	EA	CWS	ET26174			BLK, KAPTON TAPE, 0.375" W x 2.0"	3
2	EA	CWS	395275			2.4x .52mm RIBBON WIRE	2
						HIGH FLUX CORE	1

PARTS LIST

AUTOCAD	SIGN	DATE	TITLE:	CWS Coil Winding Specialist.
SOLIDWORKS	RUU	7/19/05	COLMS COM, INC	353 W. GROVE AVE
DRWMN	JLJU	7/19/05	WWW.COILWS.COM	ORANGE, CA 92865
CHKD	KSUM	7/19/05		
ENGR.	JLJU	7/19/05	40 Amps Output Choke	
APPR.	JLJU	7/19/05	(2.4mmx 0.52 mm 3-3/4T)	
			SIZE Dwg. NO.	CWS-5323B
			SCALE	REV C
				4=1
				SHEET 1 OF 1