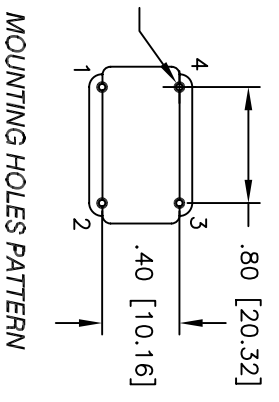
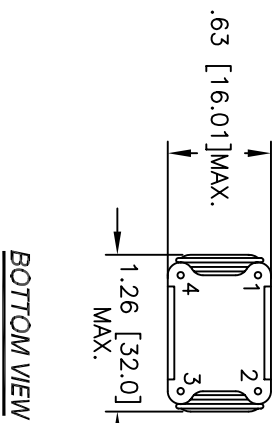
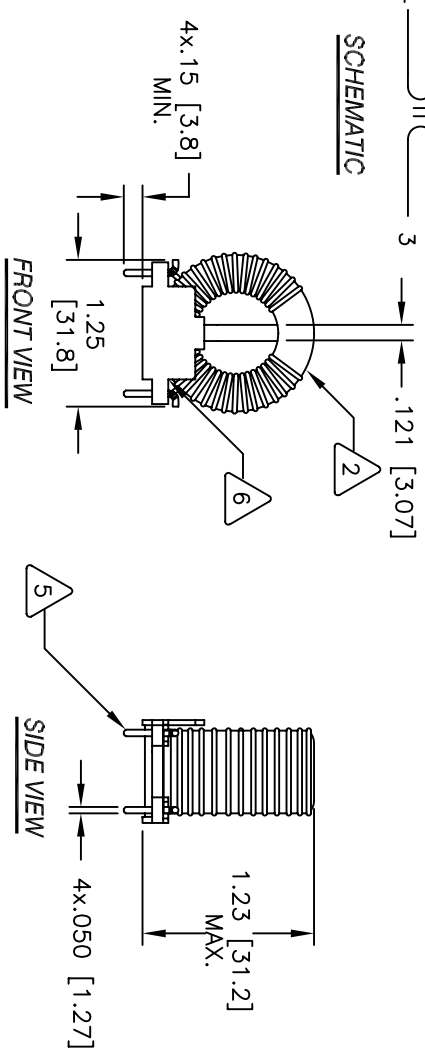
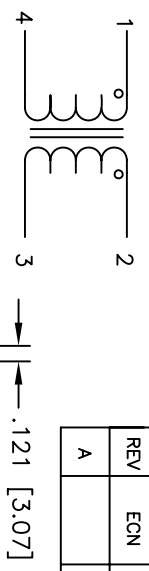


The information contained in this drawing is the sole property of CMS Coil Winding Specialist. Any reproduction in part or whole without written permission of CMS Coil Winding Specialist is prohibited.

REVISION HISTORY

REV	ECN	DESCRIPTION	BY	DATE	CHK	DATE
A		PRODUCTION RELEASE	RUU	7/12/07	JLUU	7/12/07



- 7 BUILT TO ROHS COMPLIANCE AND LEAD FREE WHERE SHOWN
IF APPLICABLE, MARK PART NUMBER AND REVISION
 - 6 APPLY EPOXY 2 PARTS
 - 5 REMOVE INSULATION AND SOLDER TO BOBBIN LEADS
 - 4 WIND BOTH COILS EVENLY SPACED
CONSTRUCTION:
MAX LEAKAGE INDUCTANCE = 20.0uH
TYPICAL SRF = 900MHZ
HI-POT TEST FOR INTERWINDING ISOLATION = 1250VDC
MAX. TEMP RISE AT RATED CURRENT = 38°C
RATED CURRENT = 5 AMPS AC MAX
DCR = 50.0 MILLI-OHMS MAX. PER SIDE
L = 1.8 mH MIN. +25% (100KHZ, <1Vrms)
 - 3 SPECIFICATIONS @ 25°C
- WIRE: UL RECOGNIZED 155°C OR 200°C RATED MAGNET WIRE
CWS BYTEMARK OR OTHER APPROVED PART
CORE: COATED FERRITE TOROID, HIGH PERM MNZN
- 2 RATING CLASS B (130°C) REQUIRED
1. MATERIAL: UL RECOGNIZED 94V-0 FLAMMABILITY FOR BOBBIN
- NOTES: UNLESS OTHERWISE SPECIFIED, READ FROM BOTTOM UP.

CODE IDENT	MFG. P/N	DESCRIPTION	ITEM NO.
PARTS LIST			
AUTOCAD SOLIDWORKS SIGN		CWS Coil Winding Specialist 353 W GROVE AVENUE ORANGE, CA. 92865	
DATE	DATE	TITLE:	REV
7/12/07	7/12/07	Common Mode Line Chokes	A
ENGR. APPR. JLUU	7/12/07	SIZE DWG. NO. PM-12-182U-5A	
SCALE 1=1		SHEET 1 OF 1	