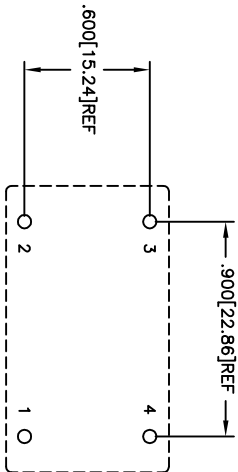
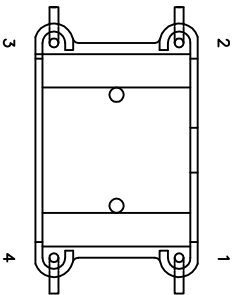
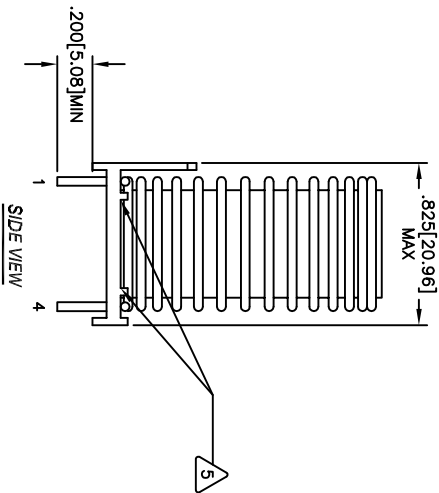
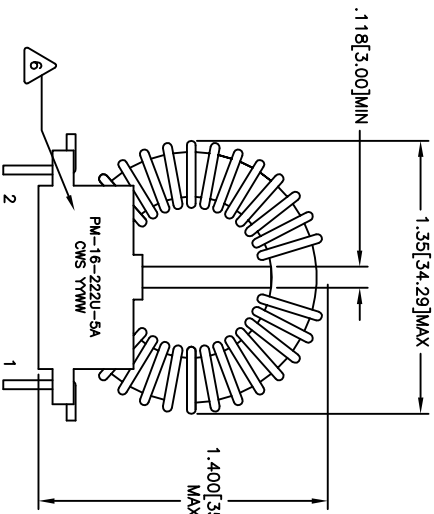
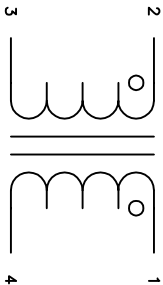


The information contained in this drawing is the sole property of CMS Coil Winding Specialist. Any reproduction in part or whole without written permission of CMS Coil Winding Specialist is prohibited.

REVISION HISTORY			
REV	ECN	DESCRIPTION	DATE
A		INITIAL PRODUCTION RELEASE	6/7/10



- 8 SUPERCEDE PREVIOUS PN: PM-H-222U-5A
- 7 BUILT TO ROHS COMPLIANCE AND LEAD FREE.
- 6 IF APPLICABLE, MARK PART NUMBER AND REVISION
- ADD EPOXY WHERE SHOWN
- SOLDER LEADS ON THE THE BASE PIN PER DWG
- 5 REMOVE WIRE INSULATION AND TIN
- 4 WIND COILS EVENLY SPACED
- CONSTRUCTION:
- WEIGHT: ~ 46 GRAMS
- OPERATING RANGE: -40° TO +125°C
- HIPOT TEST FOR INTERWINDING ISOLATION = 1250V AC MIN
- MAX TEMP RISE WITH NO AIRFLOW LESS THAN 40°C
- INTERWINDING CAPACTANCE 60 pF TYPICAL
- LEAKAGE INDUCTANCE 30 uH MAX
- RATED CURRENT MAX. = 5.0 AMPS RMS
- DCR = 25 MILLI-OHMS MAX PER WINDING
- INDUCTANCE = 2.2 mH MIN
- 3 SPECIFICATIONS @ 25°C, 60 Hz, .250 mV
- WIRE: UL RECOGNIZED CL155°C RATED MAGNET WIRE
- FR4 SPACER: 3.00 MM MINIMUM THICKNESS
- HEADER: UL CERTIFIED TOROID BASE
- CORE: HIGH PERM MANGANESE ZINC
- 2
- RATING UL-CLASS B (130°) REQUIRED
- 1 MATERIAL: UL RECOGNIZED 94V-0 FLAMMABILITY FOR BOBBIN

NOTES: UNLESS OTHERWISE SPECIFIED, READ FROM BOTTOM UP.

CODE	MFG. P/N	DESCRIPTION	ITEM NO.
AUTOQAD	X		
SOLIDWORKS			
SIGN	DATE	TITLE	
BRN	6/7/10	COLLWS COM, INC	
KLC	6/7/10	353 W Grove Ave	
AK	6/7/10	Orange, CA 92665	
DKR	6/7/10	Common Mode Choke	
KLC	6/7/10	2.2 mH MIN, 5 Amp	
APPR	6/7/10	SIZE (MM)	REV
KLC	6/7/10	B	A
SCALE	2=1	SHEET	1 OF 1