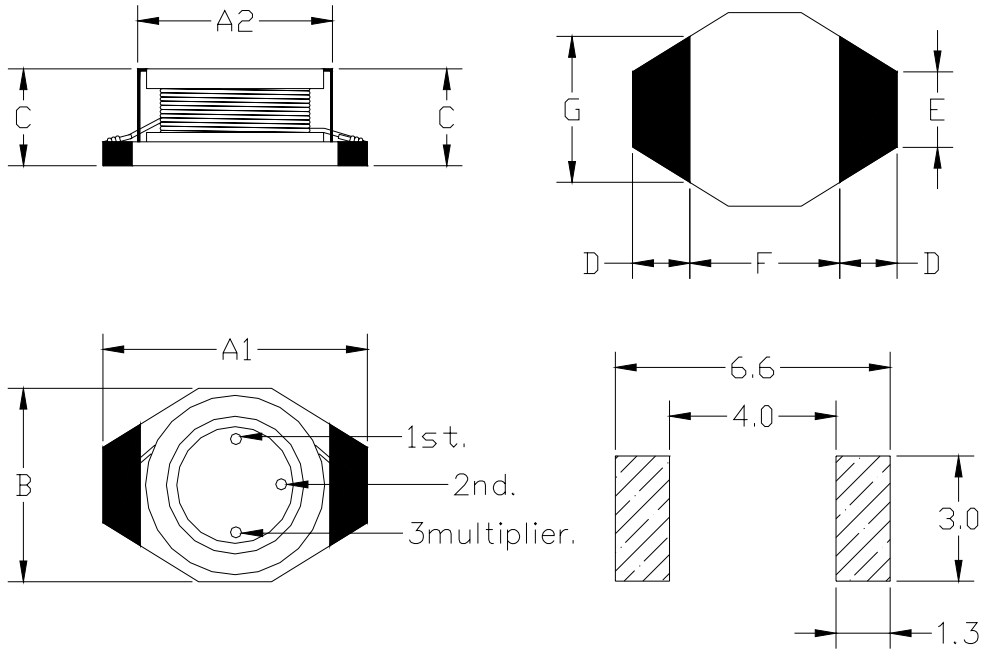


SPECIFICATION FOR APPROVAL

CUSTOMER :		PAGE :	2
PART NO. :		REVISION :	A1
DRAWN NO. :		DATE :	
DESCRIPTION :	SBP-0603-SERIES		

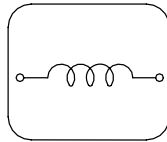
1、SHAPE & DIMENSION :



(UNIT : m/m)

SYMBOL	A	B	C	D	E	F	G
DIMENSIONS	A1: 6.6 Max	4.45 Max.	2.92 Max.	1.02	1.27	4.32	3.05
	A2: 4.06						

2、ELECTRICAL SCHEMATICS :



1.0uH ~ 10000uH



COIL WINDING SPECIALIST, Inc.

SPECIFICATION FOR APPROVAL

CUSTOMER :		PAGE :	3
PART NO. :		REVISION :	A1
DRAWN NO. :		DATE :	
DESCRIPOTION :	SBP-0603-SERIES		

3、SBP-0603-SERIES SPECIFICATION LIST :

NO.	STAR PART NO.	L (μ H)	TEST FREQ.	Q MIN.	DCR (Ω) MAX.	SRF (MHz) Min	IDC (A) MAX.
1	SBP-0603-1R0	1.0	100KHz/0.1V	30@100KHz	0.040	250	3.0
2	SBP-0603-1R5	1.5	100KHz/0.1V	30@200KHz	0.045	125	2.8
3	SBP-0603-2R2	2.2	100KHz/0.1V	40@200KHz	0.050	120	1.8
4	SBP-0603-3R3	3.3	100KHz/0.1V	40@200KHz	0.055	120	1.6
5	SBP-0603-4R7	4.7	100KHz/0.1V	40@200KHz	0.060	105	1.4
6	SBP-0603-6R8	6.8	100KHz/0.1V	40@200KHz	0.065	50	1.2
7	SBP-0603-100	10	100KHz/0.1V	40@200KHz	0.075	38	1.0
8	SBP-0603-150	15	100KHz/0.1V	40@100KHz	0.090	33	0.80
9	SBP-0603-220	22	100KHz/0.1V	40@100KHz	0.11	25	0.70
10	SBP-0603-330	33	100KHz/0.1V	40@100KHz	0.19	20	0.60
11	SBP-0603-470	47	100KHz/0.1V	40@100KHz	0.23	20	0.50
12	SBP-0603-680	68	100KHz/0.1V	40@100KHz	0.29	15	0.40
13	SBP-0603-101	100	100KHz/0.1V	40@100KHz	0.48	10	0.30
14	SBP-0603-151	150	100KHz/0.1V	40@100KHz	0.59	9	0.26
15	SBP-0603-221	220	100KHz/0.1V	40@100KHz	0.77	6	0.22
16	SBP-0603-331	330	100KHz/0.1V	40@100KHz	1.4	5	0.20
17	SBP-0603-471	470	100KHz/0.1V	40@100KHz	1.8	4	0.19
18	SBP-0603-681	680	100KHz/0.1V	40@100KHz	2.2	3	0.18
19	SBP-0603-102	1000	100KHz/0.1V	40@200KHz	3.4	2	0.15
20	SBP-0603-152	1500	100KHz/0.1V	50@100KHz	4.2	2	0.12
21	SBP-0603-222	2200	100KHz/0.1V	50@100KHz	8.5	2	0.10
22	SBP-0603-332	3300	100KHz/0.1V	50@100KHz	11.0	1	0.08
23	SBP-0603-472	4700	100KHz/0.1V	50@100KHz	13.9	1	0.06
24	SBP-0603-682	6800	100KHz/0.1V	50@100KHz	25.0	1	0.04
25	SBP-0603-103	10000	100KHz/0.1V	50@100KHz	32.8	0.8	0.02

※ Operation temperature range -40℃ TO +85℃.

※ K=10% M=20%

4、TEST INSTRUMENTS :

4-1.L : Zentech LCR Meter 3305、Zentech LCR Meter 1075or EQU.

4-2.Q : Zentech 3305 or EQU.、Agilent 4287A or EQU.

4-3.DCR : Zentech LCR 3305 or EQU.

4-4.SRF : Agilent 4286A or EQU.、Agilent 4285A or EQU.

4-5.IDC : Zentech 3305 & Zentech 2020 or EQU.

※IDC1 : BASED ON INDUCTANCE CHANGE ($|\Delta L/L_0| \leq 10\%$)

$$\Delta L = L_{(IDC)} - L_{0A}$$

※IDC2 : BASED ON TEMPERATURE ($\Delta T : 15^\circ\text{C}$)



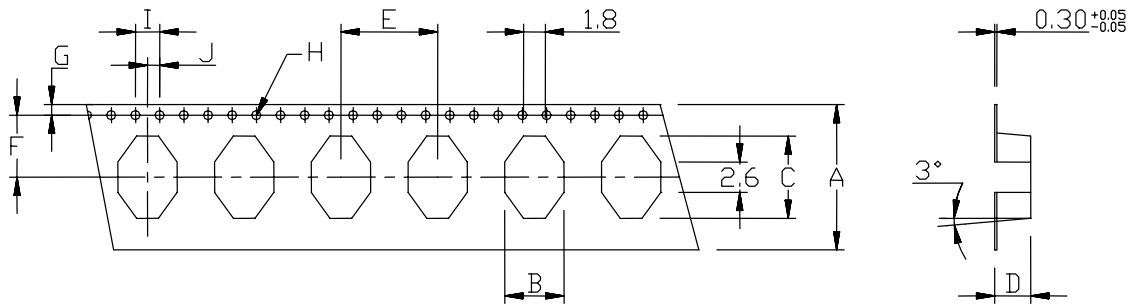
COIL WINDING SPECIALIST, Inc.

SPECIFICATION FOR APPROVAL

CUSTOMER :		PAGE :	11
PART NO. / DWG. NO. :		REVISION :	A1
DRAWN NO. :		DATE :	
DESCRIPOTION :	SBP-0603-SERIES		

8.TAPE & REEL SPECIFICATIONS

© SBP-0603

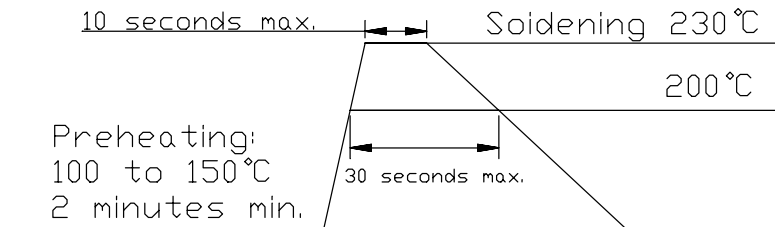


© DIMENSIONS

A	B	C	D	E	F	G	H	I	J
16±0.3	4.4±0.1	6.7±0.1	3±0.1	8±0.1	7.5±0.1	1.75±0.1	1.50±0.1	4±0.1	2±0.1

9.RECOMMENDED SOLDERING CONDITIONS

RECOMMENDED SOLDERING CONDITIONS
REFLOW SOLDERINGS



COIL WINDING SPECIALIST, Inc.