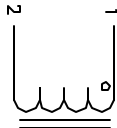


The information contained in this drawing is the sole property of CWS Coil Winding Specialist. Any reproduction in part or whole without written permission of CWS Coil Winding Specialist is prohibited.

REVISION HISTORY

REV	ECN	DESCRIPTION	SIGN & DATE		
			BY	DATE	DATE
A		PRODUCTION RELEASE	TKK	3/01/05	3/01/05



SCHEMATIC

WHERE SHOWN, USING A PERMANENT MARKING METHOD
MARK PART NUMBER AND REVISION IN APPROX

FLUSH WITH THE COIL EDGE, AS SHOWN
LEAD TINNED TO WITHIN 1/8" OF BODY

REMOVE INSULATION AND

FIX LEADS SPACING PER DRAWING
USE VW-1 RATED SHRINK TUBING TO COVER WINDING
WIND RATED WIRE TO ROD CORE AND EVENLY SPACED

CONSTRUCTION:

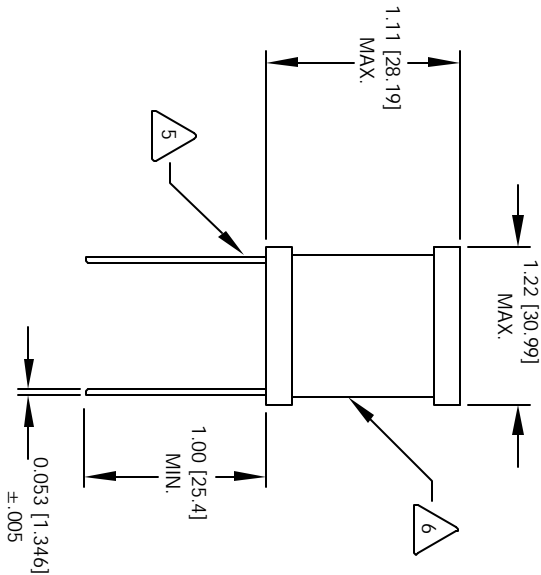
HI-POT CORE TO WIRE = 750 VDC
MAX TEMP RISE AT RATED CURRENT = 35°C

DCR = 279.0 MILLI-OHMS MAX
MAX L DROP A RATED CURRENT = 5%
RATED CURRENT (DC) = 2.5 AMPS.
L = 1000.0 uH ±10% @ 1KHz, 0.25 mV, 0 ADC
SPECIFICATIONS @ 25°C

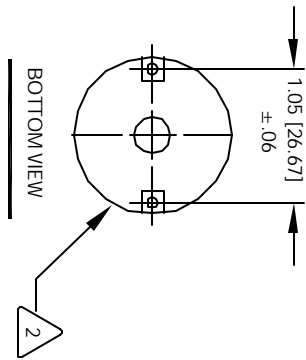
WIRE: UL RECOGNIZED 130° RATTING MAGNET WIRE
CWS BYTEMARK OR OTHER APPROVED PART
CORE: FERRITE BOBBIN CORE

MATERIAL: UL RECOGNIZED 94V-0 FOR FLAMMABILITY

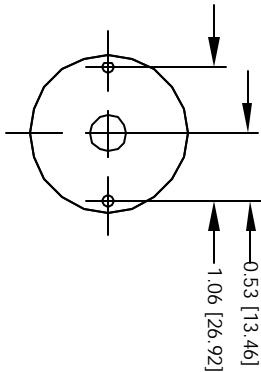
NOTES: UNLESS OTHERWISE SPECIFIED, READ FROM BOTTOM UP.



FRONT VIEW



BOTTOM VIEW



MOUNTING HOLES PATTERN

CODE	IDENT	MFG. P/N	DESCRIPTION	ITEM NO.
AUTOCAD	X		PARTS LIST	
SOLIDWORKS	SIGN	DATE		
TKK	3/01/05			
JLUU	3/01/05			
DKR	3/01/05			
KSUM	3/01/05			
APPR.	JLUU	3/01/05		
DO NOT SCALE DRAWING				

COIL WS COM, INC	CWS Coil Winding Specialist.
WWW.COILWS.COM	1510 E. Edinger Ave.
	Unit B, Santa Ana, CA. 92705

TITLE:	High Current RF Chokes
SIZE	106.10
B	J-5617
SCALE	2=1
SHEET	1 OF 1