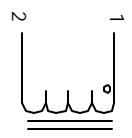


The information contained in this drawing is the sole property of CWS Coil Winding Specialist. Any reproduction in part or whole without written permission of CWS Coil Winding Specialist is prohibited.

REVISION HISTORY

REV	ECN	DESCRIPTION	DATE	BY	CHK	DATE
B		PRODUCTION RELEASE	9/20/04	RRR	JLU	9/20/04



SCHEMATIC

6 ON TOP OF COVER
IF APPLICABLE, MARK PART NUMBER

5 TINNED TERMINALS

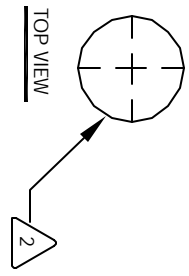
4 TERMINAL TENSILE STRENGTH = 2.5 KG MIN.
INSTALL COVER AND ENCAPSULATE WITH EPOXY
TERMINATED LEAD SOLDERED TO TERMINAL PINS
WIND WIRE TO CORE, EVENLY SPACED

3 CONSTRUCTION:
MIN. Q = 80
MAX DC RESISTANCE = 45.0 OHMS
WINDING WIRE SIZE = 0.07 MM
L = 12.0 mH ± 10%, 79.6 KHZ
OPERATING TEMP = -20 °C TO +100 °C
MAX TEMP. RISE = 20 °C
SPECIFICATIONS:

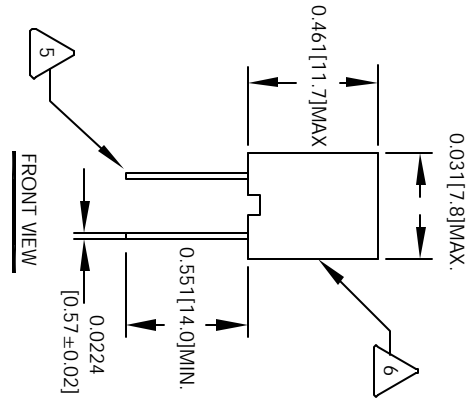
2 EPOXY: 2 PART HIGH TEMP.
OUTER JACKET: 94V-0 INSULATOR
WIRE: UL RECOGNIZED 130 °C RATED MAGNET WIRE
CWS BYTEMARK OR OTHER APPROVED PART
CORE: POWER FERRITE DRUM CORE

1 BOBBIN RATING CLASS B (130°C) REQUIRED
MATERIAL: UL RECOGNIZED 94V-0 FOR FLAMMABILITY

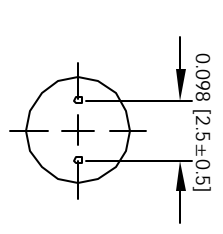
NOTES: UNLESS OTHERWISE SPECIFIED.



TOP VIEW



FRONT VIEW



MOUNTING HOLES PATTERN

UNLESS OTHERWISE SPECIFIED
DRAWING AND TOLERANCE PER ANSI Y14.5M
ALL DIMENSIONS ARE IN INCHES AND [DIMENSIONS]
TOLERANCE ANGLES: ±0.30°
±0.010 ANGLES ±0.020
TOLERANCE METRICS: ±0.254 ANGLES ±0.31°
ANGLE PROJECTION: 1st Angle
DO NOT SCALE DRAWING

QTY	CODE	MFG. P/N	DESCRIPTION	ITEM NO.
	IDENT			
	X			
AUTOCAD SOLIDWORKS SIGN		PARTS LIST		
DATE	DATE	CWS Coil Winding Specialist 1510 E. Edinger Ave. LHR. B. Santa Ana, CA. 92705		
9/20/04	9/20/04	TITLE: Potted Radial Power Chokes		
9/20/04	9/20/04	SIZE: DRG. NO. B	M0711-123K	REV B
9/20/04	9/20/04	SCALE: 2=1	SHEET 1 OF 1	