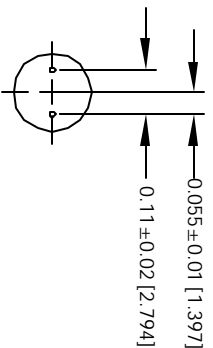
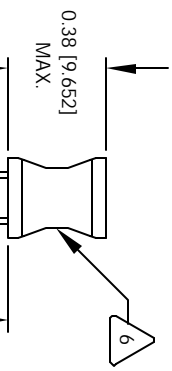
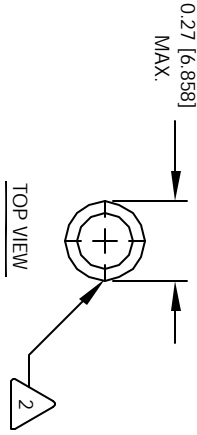
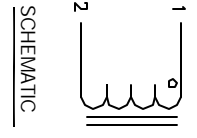


The information contained in this drawing is the sole property of CWS Coil Winding Specialist. Any reproduction in part or whole without written permission of CWS Coil Winding Specialist is prohibited.

REVISION HISTORY

REV	ECN	DESCRIPTION	DATE	BY	DATE
A		PRODUCTION RELEASE	8/10/04	JLU	8/10/04



6 IF APPLICABLE, LABEL PART NUMBER AND VALUE

5 SOLDER WINDING TO TINNED LEADS

4 COVER WINDINGS WITH UL APPROVED PVC TUBING
WIND WIRES TO ROD CORE, EVENLY SPACED.
CONSTRUCTION:

3 SELF RESONANCE FREQUENCY (SRF) = 35 MHZ
MAX DC CURRENT = 390 MILLI-AMPS
DCR = 1050 MILLI-OHMS MAX.
INDUCTANCE = 22.0 UH +- .10% @ LOW DC BIAS, 1 KHZ, 250mv
SPECIFICATIONS OF POWER INDUCTOR:

2 WIRE: UL RECOGNIZED 130°C RATED MAGNET WIRE
CWS BYTE-MARK OR OTHER APPROVED PART
CORE: FERRITE ROD CORE, LOW LOSS MNZN
BOBBIN RATING CLASS B (130°C) REQUIRED
1 MATERIAL: UL RECOGNIZED 94V-0 FOR FLAMMABILITY

NOTES: UNLESS OTHERWISE SPECIFIED.

CODE IDENT	MFG. P/N	DESCRIPTION	ITEM NO.
AUTOCAD SOLIDWORKS SIGN	X	COILS COM, INC WWW.COILS.COM	
DATE	DATE	CWS Coil Winding Specialist 1510 E. Edinger Ave Unit B, Santa Ana, CA 92705	
DATE	DATE	Power Inductor	
DATE	DATE	SIZE DIM. UN.	REV
DATE	DATE	B	A
DATE	DATE	R0612-220K	
DATE	DATE	SCALE 1=1	
DATE	DATE	SHEET 1 OF 1	