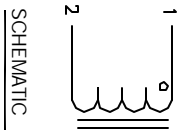


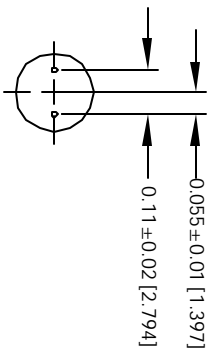
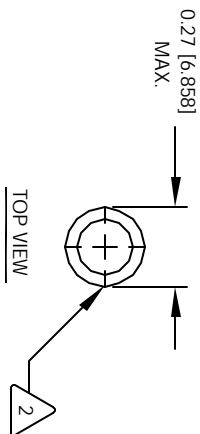
The information contained in this drawing is the sole property of CWS Coil Winding Specialist. Any reproduction in part or whole without written permission of CWS Coil Winding Specialist is prohibited.

REVISION HISTORY

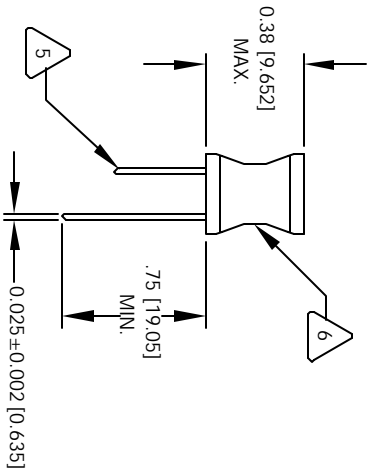
REV	ECN	DESCRIPTION	DATE	BY	CHK	DATE
A		PRODUCTION RELEASE	8/10/04	JLU		8/10/04



SCHEMATIC



MOUNTING HOLES PATTERN



6 IF APPLICABLE, LABEL PART NUMBER AND VALUE

5 SOLDER WINDING TO TINNED LEADS

COVER WINDINGS WITH UL APPROVED PVC TUBING
WIND WIRES TO ROD CORE, EVENLY SPACED.

4 CONSTRUCTION:

SELF RESONANCE FREQUENCY (SRF) = 95 MHZ
MAX DC CURRENT = 960 MILLI-AMPS
DCR = 210 MILLI-OHMS MAX.
INDUCTANCE = 2.7 UH +.10% @ LOW DC BIAS, 1 KHZ, 250mV

3 SPECIFICATIONS OF POWER INDUCTOR:

WIRE: UL RECOGNIZED 130°C RATED MAGNET WIRE
CWS BYTE-MARK OR OTHER APPROVED PART
CORE: FERRITE ROD CORE, LOW LOSS MNZN

BOBBIN RATING CLASS B (130°C) REQUIRED
1 MATERIAL: UL RECOGNIZED 94V-0 FOR FLAMMABILITY

NOTES: UNLESS OTHERWISE SPECIFIED.

CODE	IDENT	MFG. P/N	DESCRIPTION	ITEM NO.
AUTOCAD	X			
SOLIDWORKS				
SIGN		DATE		
DRAWN	RRR	8/10/04		
CHKD	JLU	8/10/04		
ENGR	KSIUM	8/10/04		
APPR.	JLU	8/10/04		
SIZE	DRW. NO.			
B			Power Inductor	REV A
SCALE		1 = 1		
				SHEET 1 OF 1

PARTS LIST

CWS Coil Winding Specialist
1510 E. Edinger Ave.
Unit B, Santa Ana, CA 92705

Power Inductor

R0612-2R7K