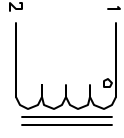


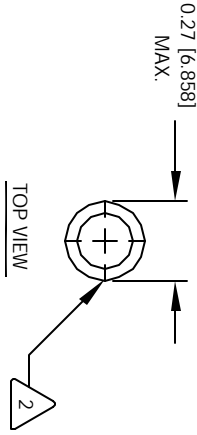
The information contained in this drawing is the sole property of CWS Coil Winding Specialist. Any reproduction in part or whole without written permission of CWS Coil Winding Specialist is prohibited.

REVISION HISTORY

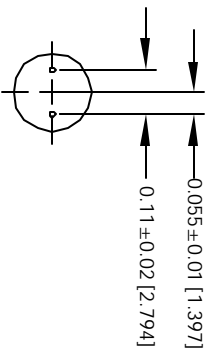
REV	ECN	DESCRIPTION	DATE	BY	DATE	CHK	DATE
A		PRODUCTION RELEASE	8/10/04	JLU	8/10/04		



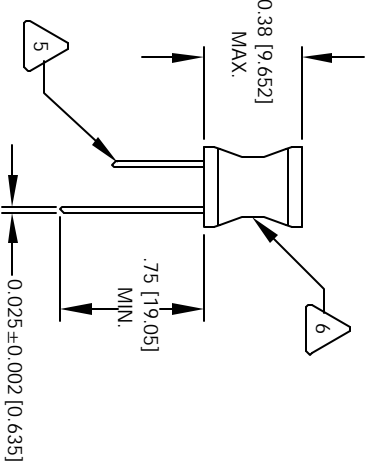
SCHEMATIC



TOP VIEW



MOUNTING HOLES PATTERN



FRONT VIEW

6 IF APPLICABLE, LABEL PART NUMBER AND VALUE

5 SOLDER WINDING TO TINNED LEADS

4 CONSTRUCTION:
COVER WINDINGS WITH UL APPROVED PVC TUBING
WIND WIRES TO ROD CORE, EVENLY SPACED.

3 SPECIFICATIONS OF POWER INDUCTOR:
WIRE: UL RECOGNIZED 130°C RATED MAGNET WIRE
CWS BYTE-MARK OR OTHER APPROVED PART
CORE: FERRITE ROD CORE, LOW LOSS MNZN
SELF RESONANCE FREQUENCY (SRF) = 80 MHZ
MAX DC CURRENT = 860 MILLI-AMPS
DCR = 250 MILLI-OHMS MAX.
INDUCTANCE = 3.9 UH +.10% @ LOW DC BIAS, 1 KHZ, 250mV

2 BOBBIN RATING CLASS B (130°C) REQUIRED
MATERIAL: UL RECOGNIZED 94V-0 FOR FLAMMABILITY

NOTES: UNLESS OTHERWISE SPECIFIED.

UNLESS OTHERWISE SPECIFIED
DRAWING AND TOLERANCE PER ANSI Y14.5M
ALL DIMENSIONS ARE IN NOTES AND DIMENSIONS
TOLERANCE INCHES: ±.0005, ±.015, ±.0005, ±.002, ±.0005, ±.002
TOLERANCE METERS: ±.0005, ±.002, ±.0005, ±.002
ANGLE PROJECTION: FIRST ANGLE
DO NOT SCALE DRAWING

CODE IDENT	MFG. P/N	DESCRIPTION	ITEM NO.
AUTOCAD SOLIDWORKS SIGN	X	COILS COM, INC WWW.COILS.COM	
DATE	DATE	CWS Coil Winding Specialist 1510 E. Edinger Ave Unit B, Santa Ana, CA 92705	
DRAWN: RFR	8/10/04	PARTS LIST	Power Inductor
CHKD: JLU	8/10/04		
ENGR: KSUM	8/10/04		
APPR: JLU	8/10/04		
SIZE: DIM. IN.	SCALE: 1=1	R0612-3R9K	REV A
		SHEET 1 OF 1	