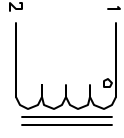


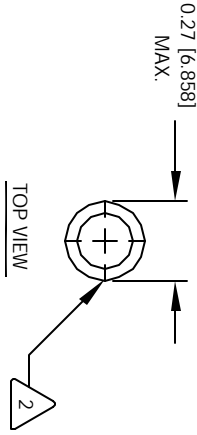
The information contained in this drawing is the sole property of CWS Coil Winding Specialist. Any reproduction in part or whole without written permission of CWS Coil Winding Specialist is prohibited.

REVISION HISTORY

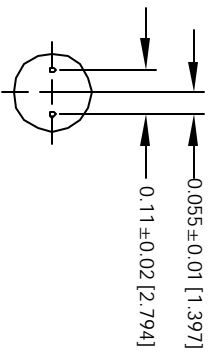
REV	ECN	DESCRIPTION	DATE	BY	CHK	DATE
A		PRODUCTION RELEASE	8/10/04	JLU		8/10/04



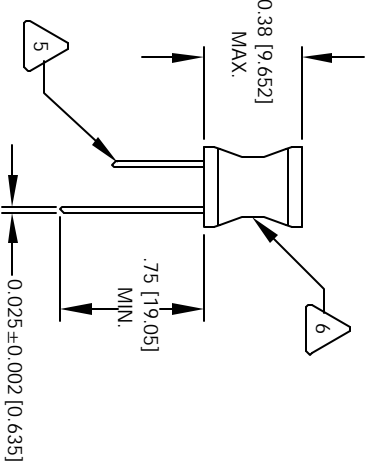
SCHEMATIC



TOP VIEW



MOUNTING HOLES PATTERN



FRONT VIEW

- 6 IF APPLICABLE, LABEL PART NUMBER AND VALUE
- 5 SOLDER WINDING TO TINNED LEADS  
COVER WINDINGS WITH UL APPROVED PVC TUBING  
WIND WIRES TO ROD CORE, EVENLY SPACED.
- 4 CONSTRUCTION:  
SELF RESONANCE FREQUENCY (SRF) = 70 MHZ  
MAX DC CURRENT = 550 MILLI-AMPS  
DCR = 500 MILLI-OHMS MAX.  
INDUCTANCE = 4.7 UH +.10% @ LOW DC BIAS, 1 KHZ, 250mV
- 3 SPECIFICATIONS OF POWER INDUCTOR:  
WIRE: UL RECOGNIZED 130°C RATED MAGNET WIRE  
CWS BYTE-MARK OR OTHER APPROVED PART  
CORE: FERRITE ROD CORE, LOW LOSS MNZN
- 2 BOBBIN RATING CLASS B (130°C) REQUIRED  
MATERIAL: UL RECOGNIZED 94V-0 FOR FLAMMABILITY

NOTES: UNLESS OTHERWISE SPECIFIED.

UNLESS OTHERWISE SPECIFIED
DRAWING AND TOLERANCE PER ANSI Y14.5M
ALL DIMENSIONS ARE IN NOTES AND DIMENSIONS
TOLERANCE INCHES: ±.0005, ±.015, ±.0005, ±.002, ±.0005, ±.002
TOLERANCE METERS: ±.0005, ±.002, ±.0005, ±.002
ANGLE PROJECTION: FIRST ANGLE
DO NOT SCALE DRAWING

CODE IDENT	MFG. P/N	DESCRIPTION	ITEM NO.
AUTOCAD SOLIDWORKS SIGN	X		
DATE			
PARTS LIST			
CWS Coil Winding Specialist 1510 E. Edinger Ave Unit B, Santa Ana, CA 92705		CWS Coil Winding Specialist	
TITLE: Power Inductor			
SIZE	DRW. NO.	REV	
B	R0612-4R7K	A	
SCALE	1=1	SHEET	1 OF 1