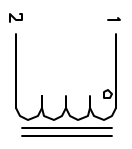


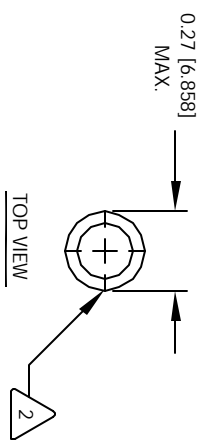
The information contained in this drawing is the sole property of CWS Coil Winding Specialist. Any reproduction in part or whole without written permission of CWS Coil Winding Specialist is prohibited.

REVISION HISTORY

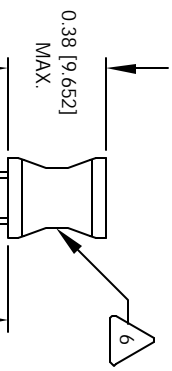
REV	ECN	DESCRIPTION	DATE	BY	CHK	DATE
A		PRODUCTION RELEASE	8/10/04	JLU		8/10/04



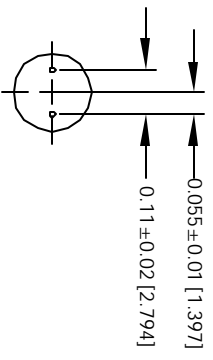
SCHEMATIC



TOP VIEW



FRONT VIEW



MOUNTING HOLES PATTERN

- 6 IF APPLICABLE, LABEL PART NUMBER AND VALUE
- 5 SOLDER WINDING TO TINNED LEADS
- COVER WINDINGS WITH UL APPROVED PVC TUBING
WIND WIRES TO ROD CORE, EVENLY SPACED.
- 4 CONSTRUCTION:
SELF RESONANCE FREQUENCY (SRF) = 24 MHz
MAX DC CURRENT = 320 MILLI-AMPS
DCR = 1750 MILLI-OHMS MAX.
INDUCTANCE = 56.0 UH +-10% @ LOW DC BIAS, 1 KHZ, 250mv
- 3 SPECIFICATIONS OF POWER INDUCTOR:
WIRE: UL RECOGNIZED 130°C RATED MAGNET WIRE
CWS BYTE-MARK OR OTHER APPROVED PART
CORE: FERRITE ROD CORE, LOW LOSS MNZN
- 2 BOBBIN RATING CLASS B (130°C) REQUIRED
- 1 MATERIAL: UL RECOGNIZED 94V-0 FOR FLAMMABILITY

NOTES: UNLESS OTHERWISE SPECIFIED.

UNLESS OTHERWISE SPECIFIED
DRAWING AND TOLERANCE PER ANSI Y14.5M
ALL DIMENSIONS ARE IN NOTES AND DIMENSIONS
TOLERANCE INCHES
XXXX±.002 .XX±.015
TOLERANCE METERS
XXXX±.127 .XX±.38
ANGLE PROJECTION
DO NOT SCALE DRAWING

CODE IDENT	MFG. P/N	DESCRIPTION	ITEM NO.
AUTOCAD SOLIDWORKS SIGN	X		
DATE			
DRAWN	8/10/04		
CHKD	8/10/04		
ENGR	8/10/04		
APPR	8/10/04		
SIZE	DWG. NO.		REV
B	R0612-560K		A
SCALE	1=1		SHEET 1 OF 1

PARTS LIST

CWS Coil Winding Specialist
1510 E. Edinger Ave.
Unit B, Santa Ana, CA 92705
www.cwswindings.com

Power Inductor