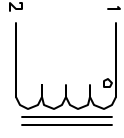


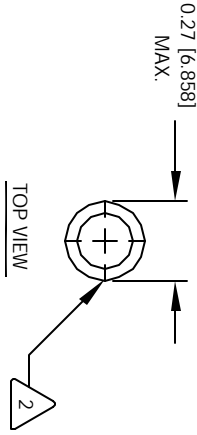
The information contained in this drawing is the sole property of CWS Coil Winding Specialist. Any reproduction in part or whole without written permission of CWS Coil Winding Specialist is prohibited.

REVISION HISTORY

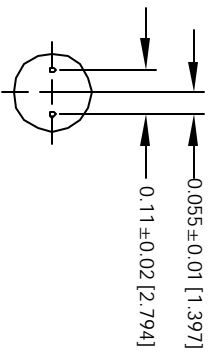
REV	ECN	DESCRIPTION	DATE	BY	CHK	DATE
A		PRODUCTION RELEASE	8/10/04	JLU		8/10/04



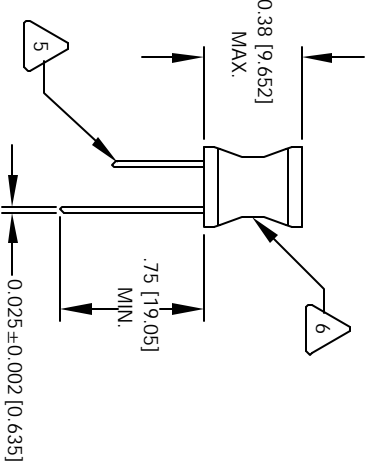
SCHEMATIC



TOP VIEW



MOUNTING HOLES PATTERN



FRONT VIEW

- 6 IF APPLICABLE, LABEL PART NUMBER AND VALUE
- 5 SOLDER WINDING TO TINNED LEADS
- COVER WINDINGS WITH UL APPROVED PVC TUBING
WIND WIRES TO ROD CORE, EVENLY SPACED.
- 4 CONSTRUCTION:
SELF RESONANCE FREQUENCY (SRF) = 65 MHZ
MAX DC CURRENT = 530 MILLI-AMPS
DCR = 550 MILLI-OHMS MAX.
INDUCTANCE = 5.6 UH +.10% @ LOW DC BIAS, 1 KHZ, 250mV
- 3 SPECIFICATIONS OF POWER INDUCTOR:
WIRE: UL RECOGNIZED 130°C RATED MAGNET WIRE
CWS BYTEMARK OR OTHER APPROVED PART
CORE: FERRITE ROD CORE, LOW LOSS MNZN
- 2 BOBBIN RATING CLASS B (130°C) REQUIRED
MATERIAL: UL RECOGNIZED 94V-0 FOR FLAMMABILITY
- 1 MATERIAL: UL RECOGNIZED 94V-0 FOR FLAMMABILITY

NOTES: UNLESS OTHERWISE SPECIFIED.

UNLESS OTHERWISE SPECIFIED
DRAWING AND TOLERANCE PER ANSI Y14.5M
ALL DIMENSIONS ARE IN NOTES AND DIMENSIONS
TOLERANCE INCHES: ±.0005, ±.015, ±.0005, ±.002, ±.0005, ±.002
TOLERANCE METERS: ±.0005, ±.002, ±.0005, ±.002
ANGLE PROJECTION: FIRST ANGLE
DO NOT SCALE DRAWING

CODE IDENT	MFG. P/N	DESCRIPTION	ITEM NO.
AUTOCAD SOLIDWORKS SIGN	X		
DATE	DATE	PARTS LIST	
8/10/04	8/10/04	CWS Coil Winding Specialist 1510 E. Edinger Ave Unit B, Santa Ana, CA 92705	
TITLE:		Power Inductor	
DRAWN: RFR	8/10/04	SIZE: DIM. IN.	REV: A
CHKD: JLU	8/10/04	SCALE: B	
ENGR: KSUM	8/10/04	1 = 1	
APPR: JLU	8/10/04		
			SHEET 1 OF 1