

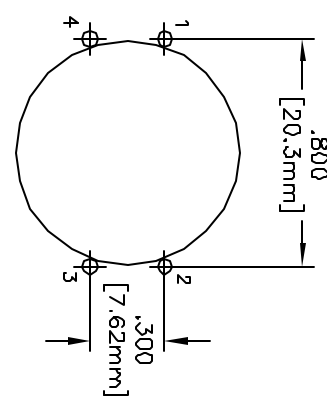
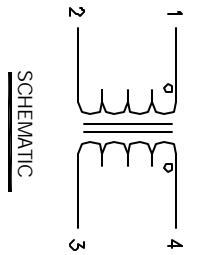
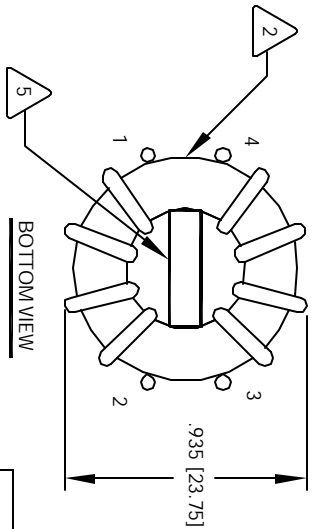
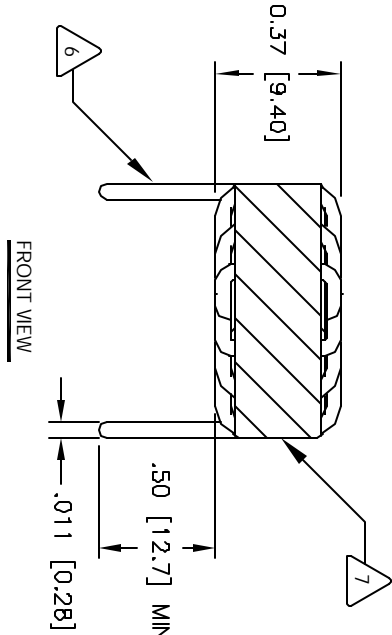
The information contained in this drawing is the sole property of CWS Coil Winding Specialist. Any reproduction in part or whole without written permission of CWS Coil Winding Specialist is prohibited.

REVISION HISTORY					
REV	ECN	DESCRIPTION	SIGN & DATE		
			BY	DATE	CHK
A		PRODUCTION RELEASE	RRR	5/18/04	JLU


- 7 WHERE SHOWN, USING A PERMANENT MARKING METHOD
MARK PART NUMBER AND REVISION
WRAP INDUCTOR WITH GLASS TAPE
- 6 TO THE CORE
MUST REST FLAT ON PCB. LEADS MUST BE TANGENT
FLUSH WITH THE CORE EDGE, AS SHOWN (I.E. COIL
REMOVE INSULATION AND TIN LEADS APPROX. 0.5 INCH

- 5 SPACER : UL 94-V0, NYLON 6/6
- 4 WIND BOTH COILS EVENLY SPACED
CONSTRUCTION:
INTER-WINDING CAPACITANCE = 32.1 pF
LEAKAGE INDUCTANCE = 75.0 uH
CURRENT RATING = 1.0 AMPS
DCR ON EACH WINDING = 440.0 MILLI-OHMS MAX
L = 17000 uH ± 30%, 10 KHZ, 250 mV
- 3 SPECIFICATIONS:

- 2 WIRE: UL RECOGNIZED 155 °C OR 200 °C (PREFERRED) RATED MAGNET WIRE
CWS BYTEMARK OR OTHER APPROVED PART
CORE: COATED FERRITE TOROID, HIGH PERM MNZN
- 1 RATING CLASS B (130 °C MIN.) REQUIRED
MATERIAL: UL RECOGNIZED 94V-0 FOR FLAMMABILITY
- NOTES: UNLESS OTHERWISE SPECIFIED, COMMON MODE CHOKE



CODE		MFG. P/N	DESCRIPTION	ITEM NO.
IDENT				
PARTS LIST				
AUTOCAD		X	CWS Coil Winding Specialist. 1510 E. Edinger Ave. Unit B, Santa Ana, CA. 92705	
SOLIDWORKS				
SIGN		DATE		
DRAWN		5/17/04		
TITLE				
DRG03	JLU	5/16/04	Common Mode Line Chokes	
ENGR	KSUN	5/16/04		
SIZE	DRG. NO.			
B	CM-173U-1A	REV A		
APPR.	JLU	5/16/04	SCALE	SHEET 1 OF 1
2=1				

UNLESS OTHERWISE SPECIFIED	
PURCHASING AND	
TOLERANCE PER ANSI Y14.5M	
ALL DIMENSIONS ARE IN INCHES	
AND (MULTIPLY BY)	
TOLERANCE INCHES	←-+0.030
0.0015 TO 0.0075	
TOLERANCE METRIC	←-+0.0075
0.0005 TO 0.0025	
1000±0.127	1000±0.25
ANGLE PROJECTION 	
DO NOT SCALE DRAWING	