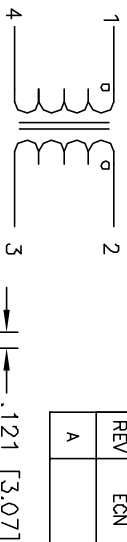


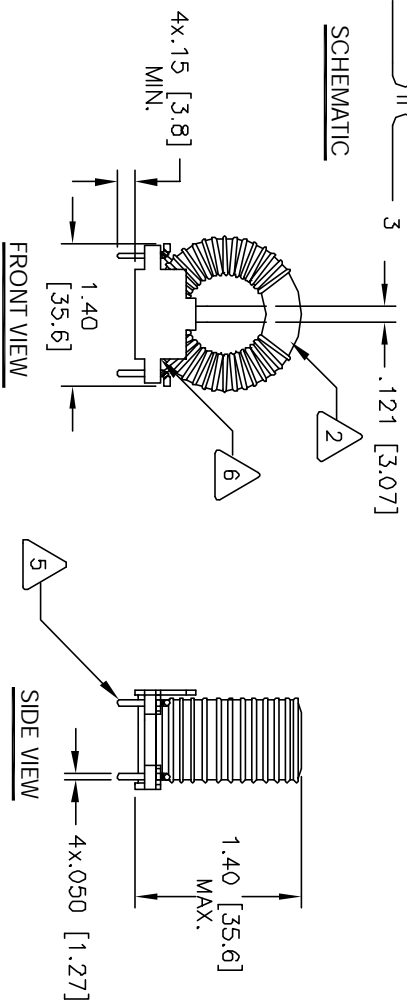
The information contained in this drawing is the sole property of CWS Coil Winding Specialists. Any reproduction in part or whole without written permission of CWS Coil Winding Specialists is prohibited.

REVISION HISTORY

REV	ECN	DESCRIPTION	DATE	BY	CHK	DATE
A		PRODUCTION RELEASE	7/08/07	JLJU	JLJU	7/08/07

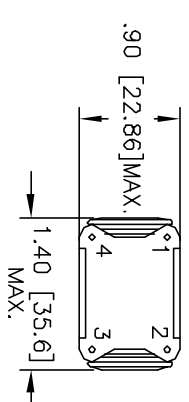


SCHEMATIC

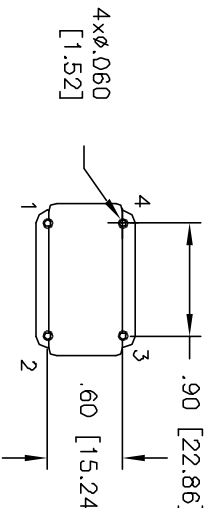


FRONT VIEW

SIDE VIEW



BOTTOM VIEW



MOUNTING HOLES PATTERN

- 7 BUILT TO ROHS COMPLIANCE AND LEAD FREE  
WHERE SHOWN, USING A PERMANENT MARKING METHOD  
MARK PART NUMBER AND REVISION
- 6 APPLY EPOXY 2 PARTS

5 REMOVE INSULATION AND SOLDER TO BOBBIN LEADS

- 4 CONSTRUCTION:  
WIND BOTH COILS EVENLY SPACED

MAX. LEAKAGE INDUCTANCE = 68.6uH  
TYPICAL SRF = 225KHZ  
HI-POT TEST FOR INTERWINDING ISOLATION = 1250VDC  
MAX. TEMP RISE AT RATED CURRENT = 26°C  
RATED CURRENT = 2.5 AMPS DC MAX  
DCR TOTAL = 93.0 MILLI-OHMS MAX.  
L=7.2 MH MIN. + 25% (100KHZ, <1Vrms)  
3 SPECIFICATIONS @ 25°C

WIRE: UL RECOGNIZED 155°C OR 200°C RATED MAGNET WIRE  
CWS BYTEMARK OR OTHER APPROVED PART  
CORE: COATED FERRITE TOROID, HIGH PERM MNZN

- 2 RATING CLASS B (130°C) REQUIRED
  - 1 MATERIAL: UL RECOGNIZED 94V-0 FLAMMABILITY FOR BOBBIN
- NOTES: UNLESS OTHERWISE SPECIFIED. READ FROM BOTTOM UP.

CODE IDENT	MFG. P/N	DESCRIPTION	ITEM NO.
AUTOCAD SIGN	X	PARTS LIST	
SOLIDWORKS SIGN			
DRAWN RLU	7/08/07	CWS Coil Winding Specialist.	
DESIGN JLU	7/08/07	www.coilw.com	
ENGR. KSUM	7/08/07	353 W. GROVE AVENUE	
APPR. JLU	7/08/07	ORANGE, CA. 92665	
TITLE:		Common Mode Line Chokes	
SIZE [DIN. IN.]		High Inductance Series	
SCALE		PM-H-702U-2.5A	REV A
		1=1	