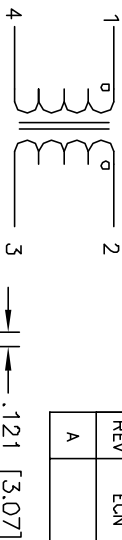


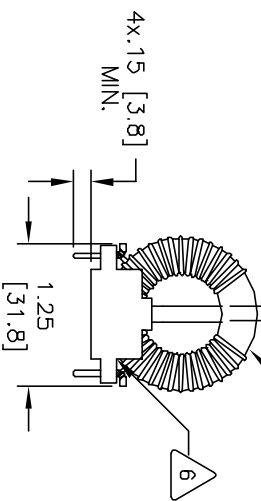
The information contained in this drawing is the sole property of CWS Coil Winding Specialist. Any reproduction in part or whole without written permission of CWS Coil Winding Specialist is prohibited.

REVISION HISTORY

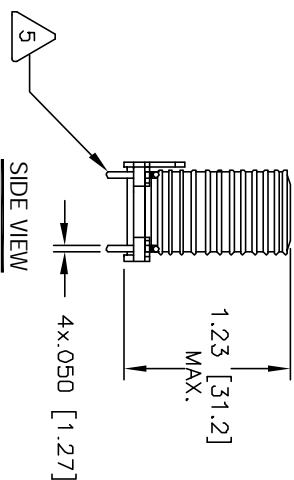
REV	ECN	DESCRIPTION	SIGN & DATE			
			BY	DATE	CHK	DATE
A		PRODUCTION RELEASE	RLU	4/18/07	JLJU	4/18/07



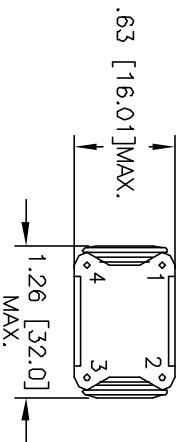
SCHEMATIC



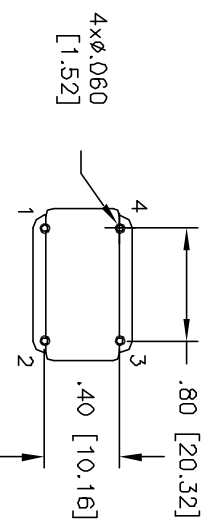
FRONT VIEW



SIDE VIEW



BOTTOM VIEW



MOUNTING HOLES PATTERN

7 BUILT TO ROHS COMPLIANCE AND LEAD FREE

WHERE SHOWN

IF APPLICABLE, MARK PART NUMBER AND REVISION

6 APPLY EPOXY 2 PARTS

5 REMOVE INSULATION AND USE AS BOBBIN LEADS

4 WIND BOTH COILS EVENLY SPACED CONSTRUCTION:

MAX LEAKAGE INDUCTANCE = 23.0uH

TYPICAL SRF = 1.2MHZ

HI-POT TEST FOR INTERWINDING ISOLATION = 1250VDC

MAX. TEMP RISE AT RATED CURRENT = 35°C

RATED CURRENT = 3.2 AMPS AC MAX

DCR = 15.6 MILLI-OHMS MAX. PER SIDE

L = 1.0 MH MIN. +25% (100KHz, <1Vrms)

3 SPECIFICATIONS @ 25°C

WIRE: UL RECOGNIZED 155°C OR 200°C RATED MAGNET WIRE

CWS BYTEMARK OR OTHER APPROVED PART

CORE: COATED FERRITE TOROID, HIGH PERM MNZN

RATING CLASS B (130°C) REQUIRED

1. MATERIAL: UL RECOGNIZED 94V-0 FLAMMABILITY FOR BOBBIN

NOTES: UNLESS OTHERWISE SPECIFIED. READ FROM BOTTOM UP.

CODE	IDENT	MFG. P/N	DESCRIPTION	ITEM NO.
AUTOCAD		X		
SOLIDWORKS				
SIGN		DATE		
DRAWN	RLU	4/18/07		
CHECKED	JLJU	4/18/07		
ENGR.	KSUM	4/18/07		
APPR.	JLJU	4/18/07		
TITLE		SIZE	DWG. NO.	REV
PARTS LIST		B	PM-S-102U-3.2A	A
DESCRIPTION		SCALE	1=1	SHEET 1 OF 1
ITEM NO.				

Common Mode Line Chokes

COIL WINDING, INC
www.coilwinding.com
CWS Coil Winding Specialist.
353 W. GROVE AVENUE
ORANGE, CA. 92665

UNLESS OTHERWISE SPECIFIED	DIMENSIONING AND TOLERANCE PER ANSI Y14.5M
ALL DIMENSIONS ARE IN INCHES AND (MILLIMETERS)	
TOLERANCE INCHES:	∅ = ±0.030
.XXX = ±.005	.XX = ±.015
TOLERANCE METRCS:	∅ = ±0.30
.XXX = ±.127	.XX = ±.38
ANGLE PROJECTION	
DO NOT SCALE DRAWING	