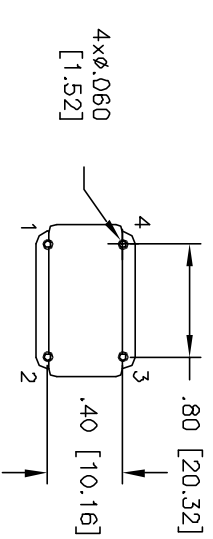
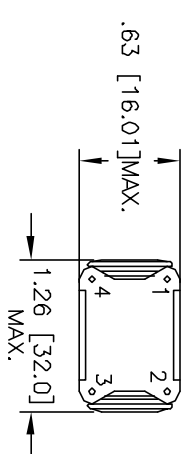
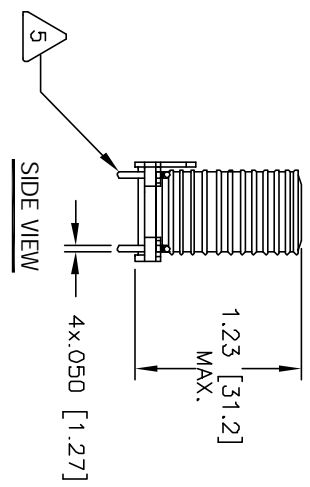
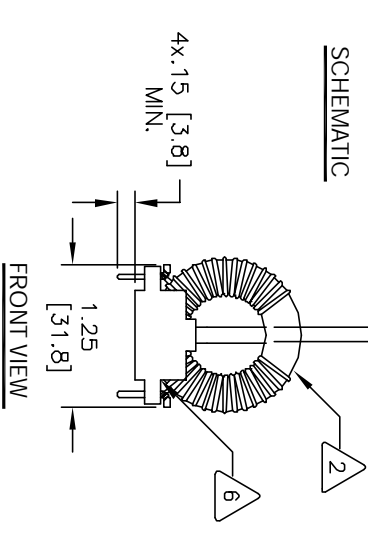
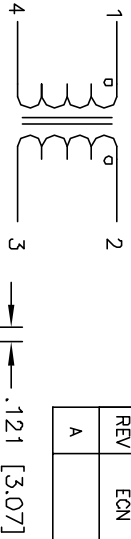


The information contained in this drawing is the sole property of CWS Coil Winding Specialist. Any reproduction in part or whole without written permission of CWS Coil Winding Specialist is prohibited.

REVISION HISTORY

REV	ECN	DESCRIPTION	SIGN & DATE		
A		PRODUCTION RELEASE	BY	DATE	CHK
			RLU	4/18/07	JLJU
				4/18/07	



- 7 BUILT TO ROHS COMPLIANCE AND LEAD FREE WHERE SHOWN
IF APPLICABLE, MARK PART NUMBER AND REVISION
- 6 APPLY EPOXY 2 PARTS
- 5 REMOVE INSULATION AND SOLDER TO BOBBIN LEADS
- 4 WIND BOTH COILS EVENLY SPACED
CONSTRUCTION:
MAX LEAKAGE INDUCTANCE = 22.0uH
TYPICAL SRF = 1.2MHZ
HI-POT TEST FOR INTERWINDING ISOLATION = 1250VDC
MAX. TEMP RISE AT RATED CURRENT = 20°C
RATED CURRENT = 3.2 AMPS AC MAX
DCR=18.0 MILLI-OHMS MAX. PER SIDE
L = 1.5 MH MIN. +25% (100KHZ, <1Vrms)
3 SPECIFICATIONS @ 25°C

- 2 WIRE: UL RECOGNIZED 155°C OR 200°C RATED MAGNET WIRE
CWS BYTEMARK OR OTHER APPROVED PART
CORE: COATED FERRITE TOROID, HIGH PERM MNZN
 - 1 RATING CLASS B (130°C) REQUIRED
MATERIAL: UL RECOGNIZED 94V-0 FLAMMABILITY FOR BOBBIN
- NOTES: UNLESS OTHERWISE SPECIFIED. READ FROM BOTTOM UP.

CODE IDENT	MFG. P/N	DESCRIPTION	ITEM NO.
AUTOCAD SIGN	X	PARTS LIST	
SOLIDWORKS SIGN			
DATE	DATE		
4/18/07	4/18/07		
DRWN RLU	ENGR. KSUM	TITLE: Common Mode Line Chokes	REV A
CHKD JLJU	APPR. JLJU	SIZE Dwg. No. B	REV A
		PM-S-152U-3.2A	
		SCALE 1=1	SHEET 1 OF 1

UNLESS OTHERWISE SPECIFIED
DIMENSIONS AND TOLERANCE PER ANSI Y14.3M
ALL DIMENSIONS ARE IN INCHES AND [MILLIMETERS]
TOLERANCE INCHES: $\pm .030$
$.XX = \pm .005$, $.XY = \pm .015$
TOLERANCE METRCS: $\pm .40$
$.XX = \pm .127$, $.XY = \pm .254$
ANGLE PROJECTION: FIRST ANGLE
DO NOT SCALE DRAWING