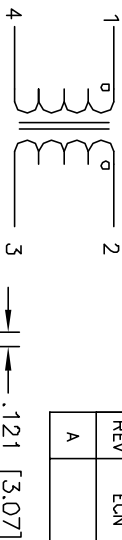


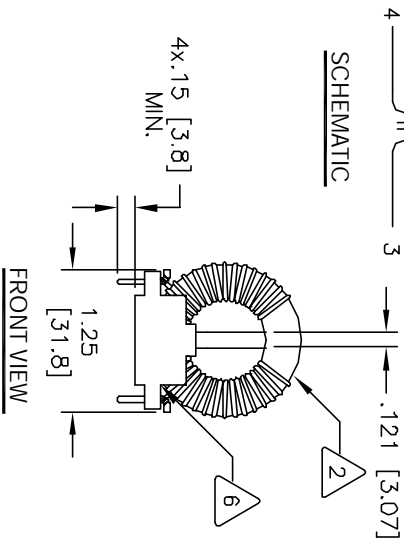
The information contained in this drawing is the sole property of CWS Coil Winding Specialist. Any reproduction in part or whole without written permission of CWS Coil Winding Specialist is prohibited.

REVISION HISTORY

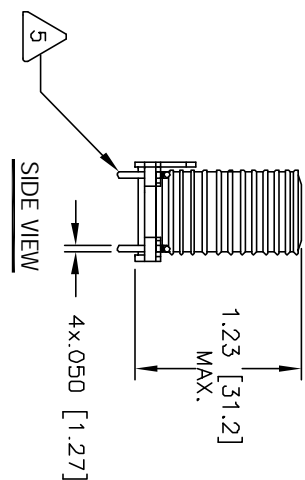
REV	ECN	DESCRIPTION	SIGN & DATE		
A		PRODUCTION RELEASE	BY	DATE	CHK
			RLU	7/12/07	JLJU
					7/12/07



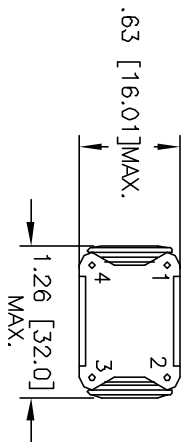
SCHEMATIC



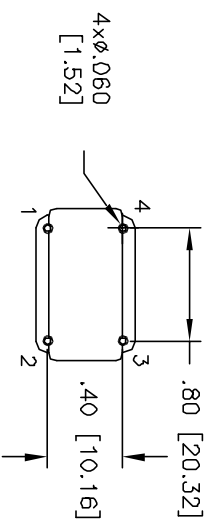
FRONT VIEW



SIDE VIEW



BOTTOM VIEW



MOUNTING HOLES PATTERN

- 7 BUILT TO ROHS COMPLIANCE AND LEAD FREE WHERE SHOWN  
IF APPLICABLE, MARK PART NUMBER AND REVISION
- 6 APPLY EPOXY 2 PARTS
- 5 REMOVE INSULATION AND SOLDER TO BOBBIN LEADS

- 4 WIND BOTH COILS EVENLY SPACED  
CONSTRUCTION:  
MAX LEAKAGE INDUCTANCE = 20.0uH  
TYPICAL SRF = 900MHZ  
HI-POT TEST FOR INTERWINDING ISOLATION = 1250VDC  
MAX. TEMP RISE AT RATED CURRENT = 38°C  
RATED CURRENT = 5 AMPS AC MAX  
DCR = 50.0 MILLI-OHMS MAX. PER SIDE  
L = 1.8 MH MIN. +25% (100KHz, <1Vrms)  
3 SPECIFICATIONS @ 25°C

- 2 WIRE: UL RECOGNIZED 155°C OR 200°C RATED MAGNET WIRE  
CWS BYTEMARK OR OTHER APPROVED PART  
CORE: COATED FERRITE TOROID, HIGH PERM MNZN

- 1 RATING CLASS B (130°C) REQUIRED  
MATERIAL: UL RECOGNIZED 94V-0 FLAMMABILITY FOR BOBBIN
- NOTES: UNLESS OTHERWISE SPECIFIED. READ FROM BOTTOM UP.

CODE	IDENT	MFG. P/N	DESCRIPTION	ITEM NO.
AUTOCAD	X		PARTS LIST	
SOLIDWORKS				
SIGN	DATE			
DRAWN	RLU	7/12/07		
DESIGN	JLJU	7/12/07		
ENGR.	KSUM	7/12/07		
APPR.	JLJU	7/12/07		
SIZE	DWG. NO.			
B	PM-S-182U-5A			REV A
SCALE	1=1			SHEET 1 OF 1

**COILS.COM, INC**  
www.coils.com  
CWS Coil Winding Specialist.  
353 W. GROVE AVENUE  
ORANGE, CA. 92665

**Common Mode Line Chokes**