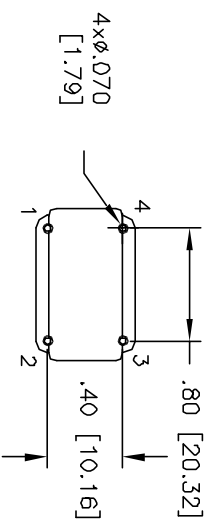
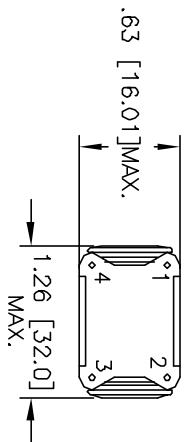
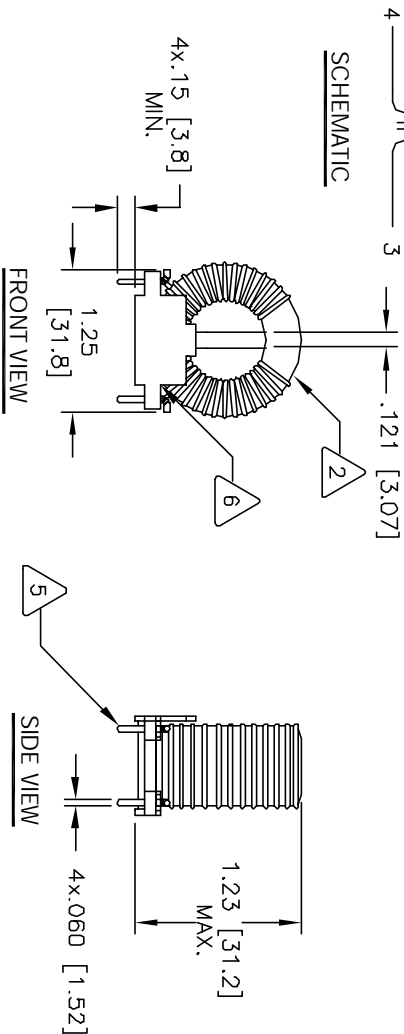
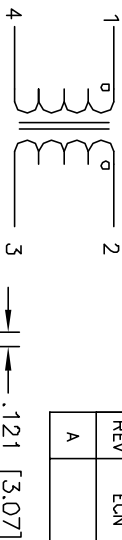


The information contained in this drawing is the sole property of CWS Coil Winding Specialist. Any reproduction in part or whole without written permission of CWS Coil Winding Specialist is prohibited.

REVISION HISTORY

REV	ECN	DESCRIPTION	SIGN & DATE		
			BY	DATE	CHK
A		PRODUCTION RELEASE	RLU	4/17/07	JLJU
				4/17/07	



- 7 BUILT TO ROHS COMPLIANCE AND LEAD FREE WHERE SHOWN
IF APPLICABLE, MARK PART NUMBER AND REVISION
- 6 APPLY EPOXY 2 PARTS
- 5 REMOVE INSULATION AND USE AS BOBBIN LEADS

- 4 WIND BOTH COILS EVENLY SPACED
CONSTRUCTION:
MAX LEAKAGE INDUCTANCE = 6.2uH
TYPICAL SRF = 1.75MHZ
HI-POT TEST FOR INTERWINDING ISOLATION = 1250VDC
MAX. TEMP RISE AT RATED CURRENT = 25°C
RATED CURRENT = 8.0 AMPS AC MAX
DCR=4.26 MILLI-OHMS MAX. PER SIDE
L = .425 MH MIN. +25% (100KHZ, <1Vrms)
3 SPECIFICATIONS @ 25°C

- 2 WIRE: UL RECOGNIZED 155°C OR 200°C RATED MAGNET WIRE
CWS BYTEMARK OR OTHER APPROVED PART
CORE: COATED FERRITE TOROID, HIGH PERM MNZN

- 1 RATING CLASS B (130°C) REQUIRED
MATERIAL: UL RECOGNIZED 94V-0 FLAMMABILITY FOR BOBBIN
- NOTES: UNLESS OTHERWISE SPECIFIED. READ FROM BOTTOM UP.

CODE IDENT	MFG. P/N	DESCRIPTION	ITEM NO.
AUTOCAD SIGN	X	COILS COM, INC www.coilws.com	
SOLIDWORKS SIGN		CWS Coil Winding Specialist. 353 W GROVE AVENUE ORANGE, CA. 92665	
DATE	DATE	TITLE	
4/17/07	4/17/07	Common Mode Line Chokes	
DRWN RLU	ENGR. KSLUM	SIZE Dwg. No.	REV
4/17/07	4/17/07	B	A
CHKD JLJU	APPR. JLJU	PM-S-431U-8A	
4/17/07	4/17/07	SCALE 1=1	SHEET 1 OF 1