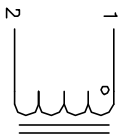


The information contained in this drawing is the sole property of CWS Coil Winding Specialist. Any reproduction in part or whole without written permission of CWS Coil Winding Specialist is prohibited.

REVISION HISTORY

REV	ECN	DESCRIPTION	SIGN & DATE			
			BY	DATE	CHK	DATE
C		PRODUCTION RELEASE	RPR	6/20/06	JLJU	6/20/06



SCHEMATIC

7 BUILT TO ROHS COMPLIANCE AND LEAD FREE.

6 WHERE SHOWN, USING A PERMANENT MARKING METHOD IF APPLICABLE. MARK PART NUMBER AND REVISION

5 FLUSH WITH THE COIL EDGE, AS SHOWN
REMOVE INSULATION AND TIN LEADS APPROX. 0.75 INCH

4 WIND WIRE TO CORE EVENLY SPACED
CONSTRUCTION:

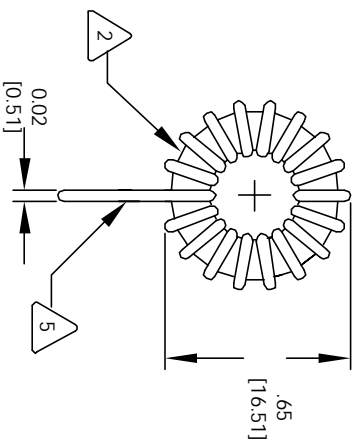
- WEIGHT = 7.0 GRAMS
- HI-POT TEST FOR WIRE TO CORE = 500 VDC
- INDUCTANCE @ RATED CURRENT = 310.0 uH
- DC CURRENT RATING = 1.0 AMPS MAX
- DCR = 33 MILLI-OHMS, MAX
- INDUCTANCE @ 0 AMPS = 470.0 uH, ± 20%, 1 KHZ., 0.25 Vrms
- SPECIFICATIONS @ 25 °C

3 WIRE: UL RECOGNIZED 130°C RATED MAGNET WIRE
CORE: COATED IRON POWDER

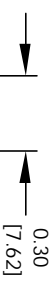
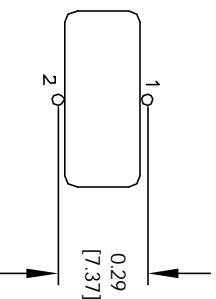
2 CORE COATING RATING CLASS B (130°) REQUIRED
MATERIAL: UL RECOGNIZED 94V-0 FOR FLAMMABILITY

NOTES: UNLESS OTHERWISE SPECIFIED, TOROIDAL INDUCTOR
READ FROM BOTTOM UP.

VERTICAL CONFIGURATION



MOUNTING HOLES PATTERN



CODE	IDENT	MFG. P/N	DESCRIPTION	ITEM NO.
PARTS LIST				
AUTOCAD		X		
SOLIDWORKS				
SIGN				
DATE				
DRAWN	RPR	6/20/06	COIL WS COM, INC CWS Coil Winding Specialist. 353 W. GROVE AVENUE ORANGE, CA. 92665	
CHKD	JLJU	6/20/06		
ENGR.	KSUM	6/20/06		
APPR.	JLJU	6/20/06		
TITLE		Power Toroidal Inductors Vertical Mount		
SIZE		Dwg. No. TC-471M-1A-60V		
SCALE		B 2=1		
DO NOT SCALE DRAWINGS				REV C